

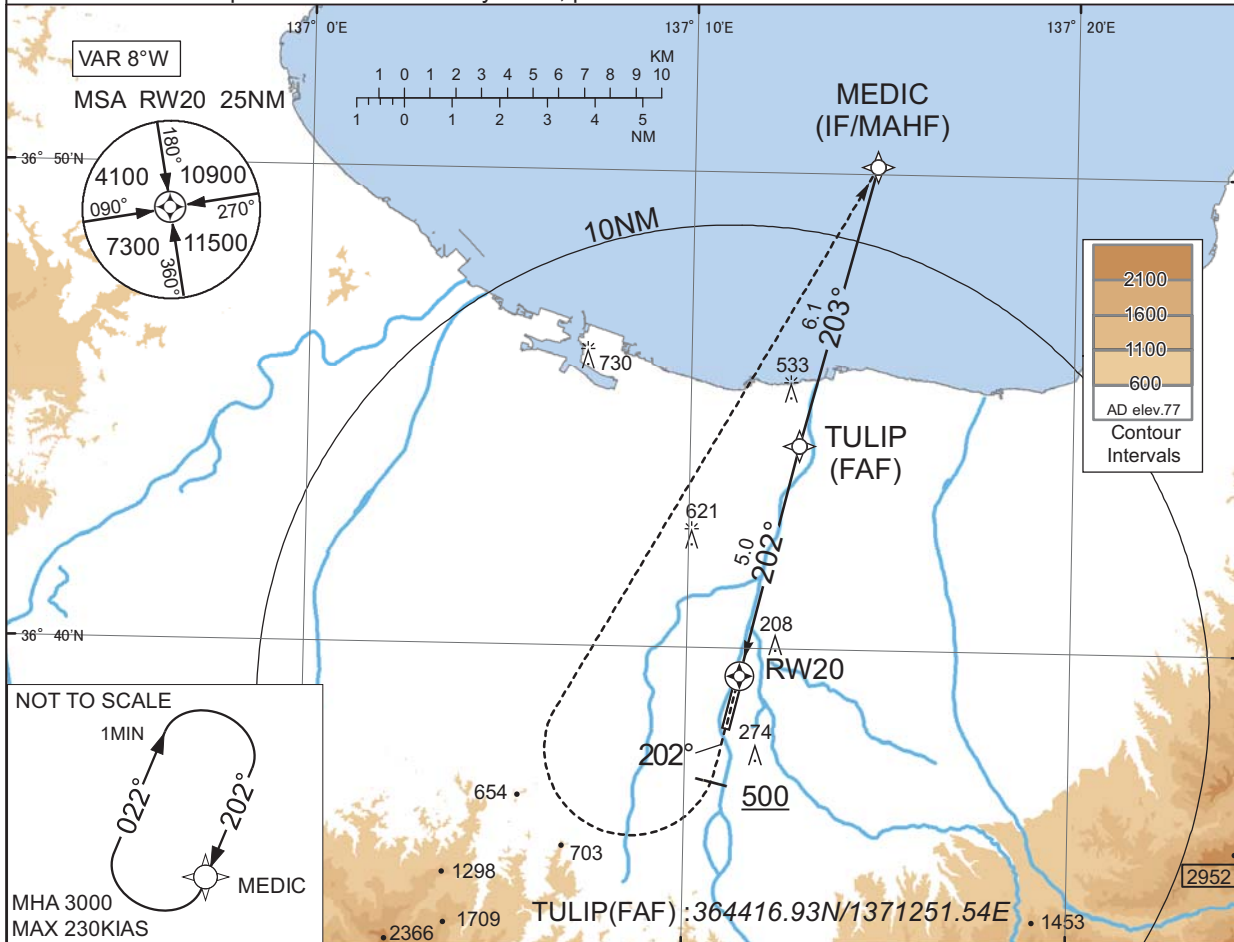
INSTRUMENT APPROACH CHART

RJNT / TOYAMA

RNP Y RWY20(AR)

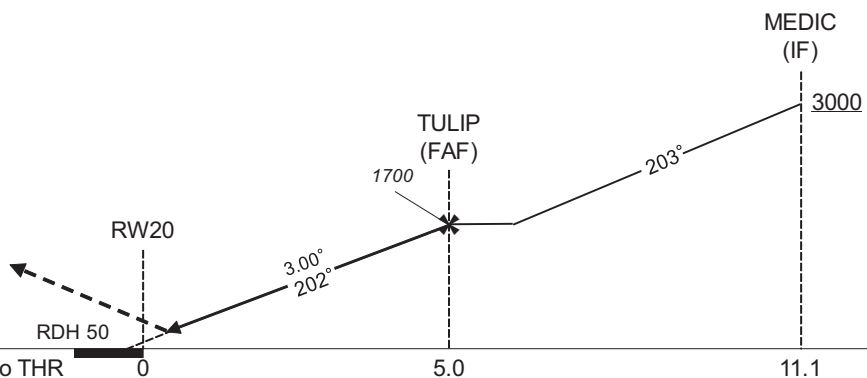
KOBE CONTROL 132.45 - 125.6 304.4 - 317.1	RNP AR	TOYAMA TOWER 124.3 - 126.2	NO RADAR
---	--------	-------------------------------	----------

For uncompensated Baro-VNAV systems, procedure not authorized below -10°C / above 50°C



MISSED APPROACH

From RWY20 on track 202°, at or above 500FT turn right, direct to MEDIC and hold at 3000FT. Contact TOYAMA TWR.



Missed APCH climb gradient MNM 5.0%

MINIMA	THR elev. 63	AD elev. 77
RNP 0.30		
CAT	DA(H)	CMV
A	-	-
B	-	-
C	370(307)	1000
D		1400

Authorization Required

MINIMA with Missed APCH climb gradient of 2.5% are not established.

CHANGE : HLDG pattern for using NAVAID abolished.

INSTRUMENT APPROACH CHART

RJNT / TOYAMA

RNP Y RWY20(AR)

Coding Table

Serial Number	Path Descriptor	Waypoint Identifier	Fly Over	Course °M(°T)	Magnetic Variation	Distance (NM)	Turn Direction	Altitude (FT)	Speed (KIAS)	VPA/RDH (°/FT)	RNP Value
001	IF	MEDIC	-	-	-8.5	-	-	+3000	-	-	-
002	TF	TULIP	-	203 (194.7)	-8.5	6.1	-	1700	-	-	1.0
003	TF	RW20	Y	202 (193.5)	-8.5	5.0	-	113	-	-3.00/50	0.3
004	FA	-	-	202 (193.5)	-8.5	-	-	+500	-	-	1.0
005	DF	MEDIC	-	-	-8.5	-	R	3000	-	-	1.0

Path	Waypoint Identifier	Inbound Course °M(°T)	Magnetic Variation	Outbound Time (MIN)	Turn Direction	Minimum Altitude (FT)	Maximum Altitude (FT)	Speed (KIAS)	RNP Value
Hold	MEDIC	202 (193.6)	-8.5	1.0 (-14000)	R	3000	FL140	-230 (-14000)	1.0

Waypoint Coordinates

Waypoint Identifier	Coordinates
MEDIC	365010.50N / 1371447.15E
TULIP	364416.93N / 1371251.54E
RW20	363925.86N / 1371124.14E