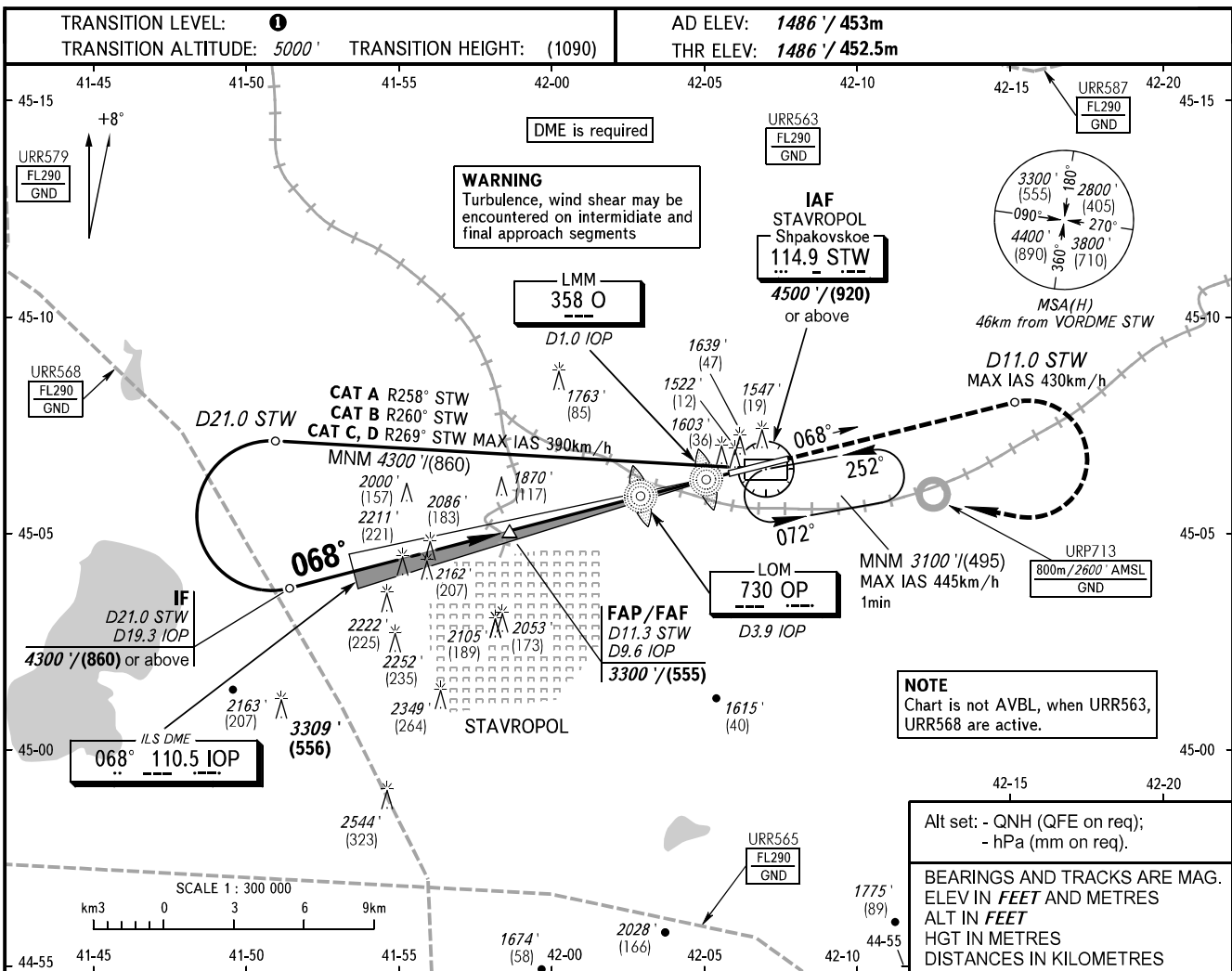


**INSTRUMENT
APPROACH
CHART - ICAO**

TOWER **120.900**

STAVROPOL, RUSSIA
SHPAKOVSKOYE
ILS U CAT I, LOC U RWY 07

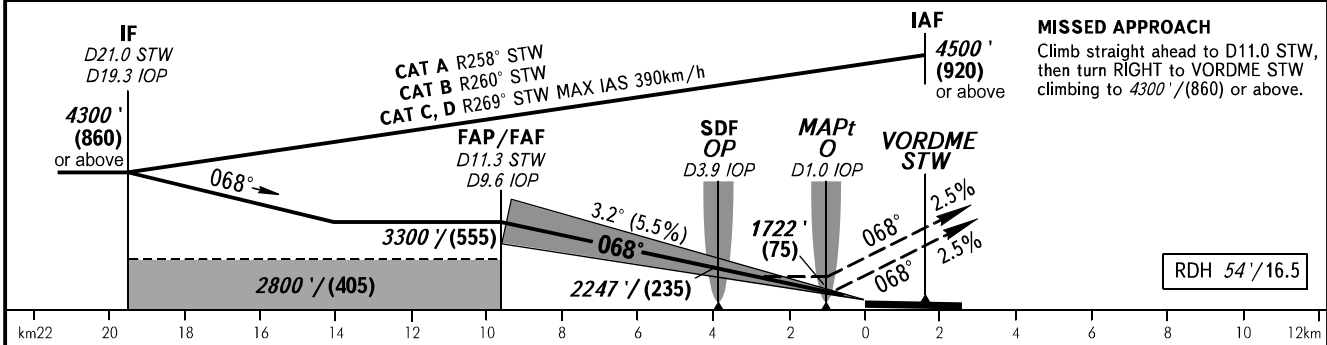


NOTE
Chart is not AVBL, when URR563, URR568 are active.

Alt set: - QNH (QFE on req);
- hPa (mm on req).

BEARINGS AND TRACKS ARE MAG.
ELEV IN FEET AND METRES
ALT IN FEET
HGT IN METRES
DISTANCES IN KILOMETRES

DME IOP	9.6	8.0	6.0	4.0	2.0
ALTITUDE/HEIGHT	3300' / (555)	2990' / (460)	2630' / (350)	2270' / (240)	1910' / (130)



MISSED APPROACH
Climb straight ahead to D11.0 STW, then turn RIGHT to VORDME STW climbing to 4300' / (860) or above.

		A	B	C	D
Straight-in Approach	CAT I	1652' (167') (51)	1665' (179') (55)	1673' (187') (57)	1683' (198') (60)
	LOC With SDF	1810' (320') (100)	1810' (320') (100)	1810' (320') (100)	1810' (320') (100)
	LOC WO SDF	1890' (400') (125)	1890' (400') (125)	1890' (400') (125)	1890' (400') (125)
Circling		1940' (450') (140)	1980' (500') (155)	2150' (670') (205)	2270' (780') (240)

TRANSITION LEVEL:
- FLO60 when QNH is 1013 hPa (760mm mercury column) or above;
- FLO70 when QNH is 977 hPa (733mm mercury column) or above, but less than 1013 hPa (760mm mercury column);
- FLO80 when QNH is less than 977 hPa (733mm mercury column).

WARNING:
1. ILS DME IOP reads zero at RWY 07 THR.
2. MAPt at LMM O. Timing not authorized for defining MAPt.
3. STAR PARAT 1S, BEDAP 1S, NETMI 1S, LEGNA 1S - pass IAF at FLO60 or above.

GROUND SPEED	km/h	150	180	210	240	270	300	330	360	390
RATE OF DESCENT	m/s	2.3	2.8	3.2	3.7	4.1	4.6	5.1	5.5	6.0
	ft/min	451	541	632	722	812	902	992	1082	1173

CHANGE: Limiting bearing line withdrawn, URP713