

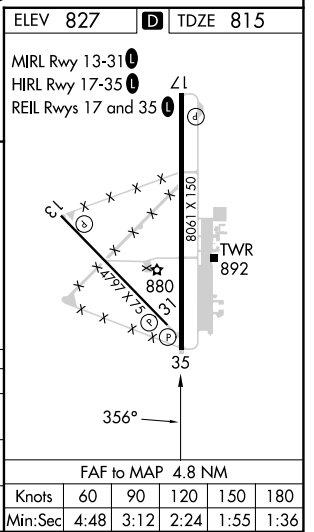
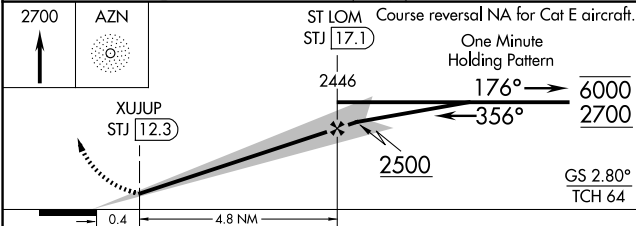
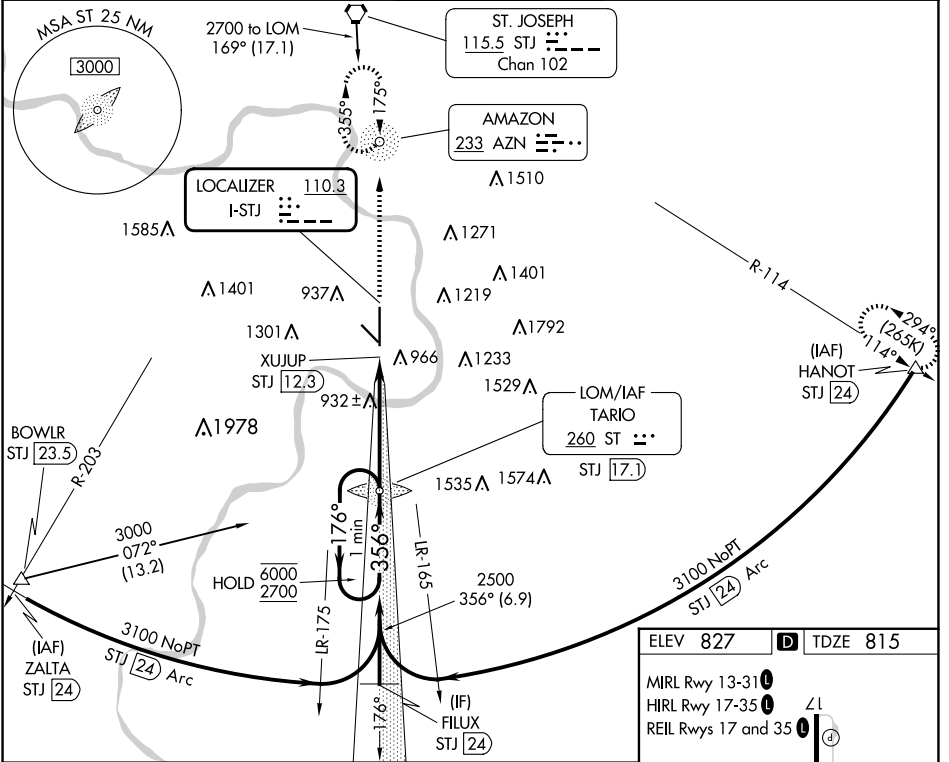
LOC I-STJ 110.3	APP CRS 356°	Rwy Idg TDZE Apt Elev	8061 815 827
---------------------------	------------------------	-----------------------------	---

ILS or LOC RWY 35

ROSECRANS MEML (STJ)

ADF or TACAN required.		MISSILE APPROACH: Climb to 2700 direct AZN NDB and hold. (TACAN aircraft climb to 2700 then climbing right turn to 3100 on STJ VORTAC R-114 to HANOT/24 DME and hold NW, LT, 114° inbound).		
DME from STJ VORTAC, simultaneous reception of I-STJ and STJ DME required. ASR/PAR				

ATIS 125.05	ST. JOSEPH APP CON ★ 120.35 360.8	ST. JOSEPH TOWER ★ 126.9(CTAF) 239.0	GND CON 121.9	UNICOM 122.95
-----------------------	---	--	-------------------------	-------------------------



CATEGORY	A	B	C	D	E
S-ILS 35	1015/40 200 (200-¾)				
S-LOC 35	1200/55	385 (400-1)	1200/60 385 (400-1¼)		
CIRCLING	1400-1	1420-1	1620-2¼	1640-2¾	1760-3
	573 (600-1)	593 (600-1)	793 (800-2¼)	813 (900-2¾)	933 (1000-3)

NC-3, 20 MAR 2025 to 17 APR 2025

NC-3, 20 MAR 2025 to 17 APR 2025