

STANDARD DEPARTURE CHART - INSTRUMENT

VAR9°W

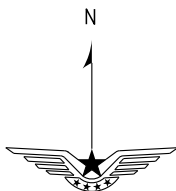
D-ATIS 126.25
TWR 118.85(124.35)

ZYCC CHANGCHUN/Longjia
RWY06(ISLUK/BUTET)

BEARINGS ARE MAGNETIC.
ALTITUDES, ELEVATIONS
AND HEIGHTS IN METERS.
DME DISTANCES IN
NAUTICAL MILES.
DISTANCES IN KM.

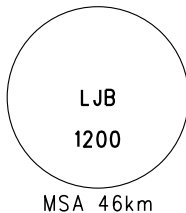
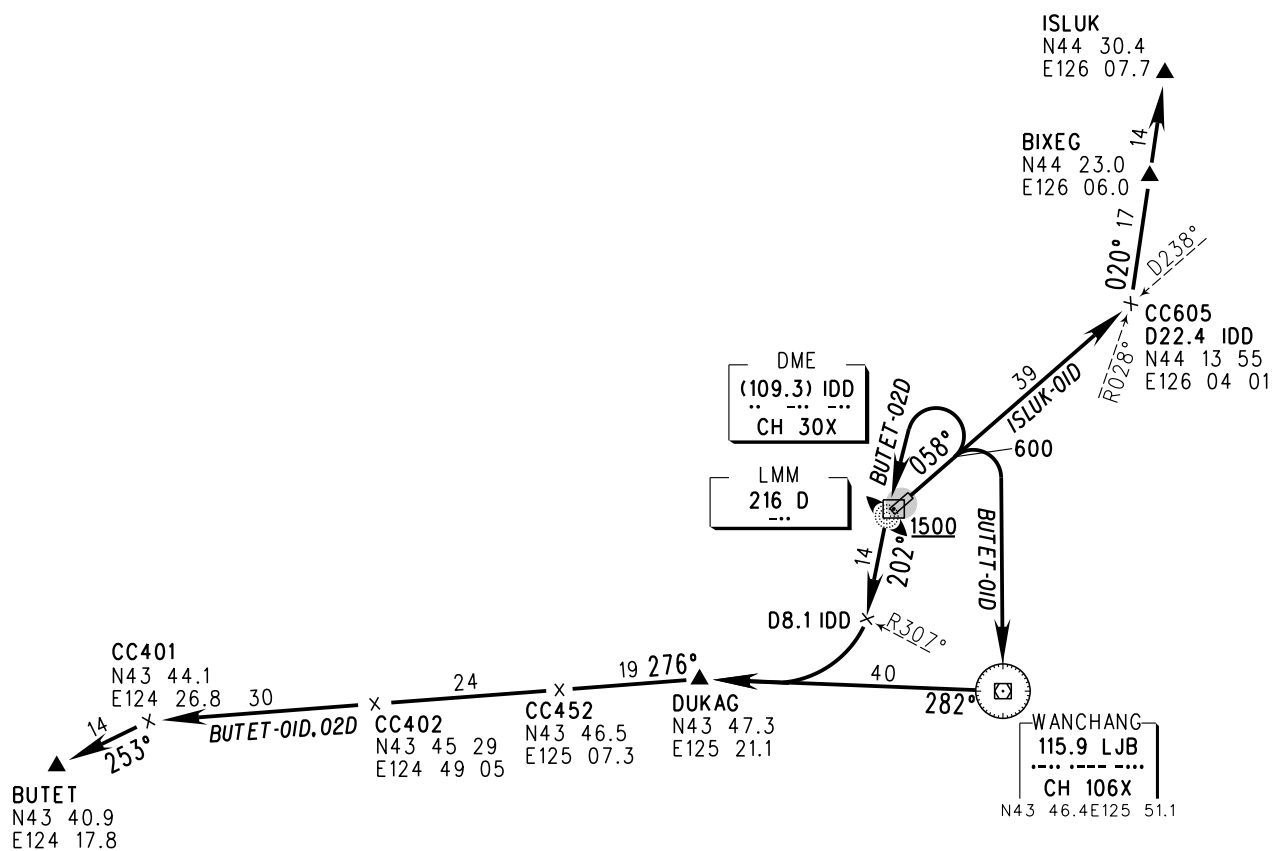
APP01 119.45 (127.9)
APP02 125.25 (127.9)
APP03 120.2 (127.9)

TL 3600
TA 3000
3300(QNH ≥ 1031hPa)
2700(QNH ≤ 979hPa)



NOT TO SCALE

Departure turn MAX IAS220kt



Changes: APP03.