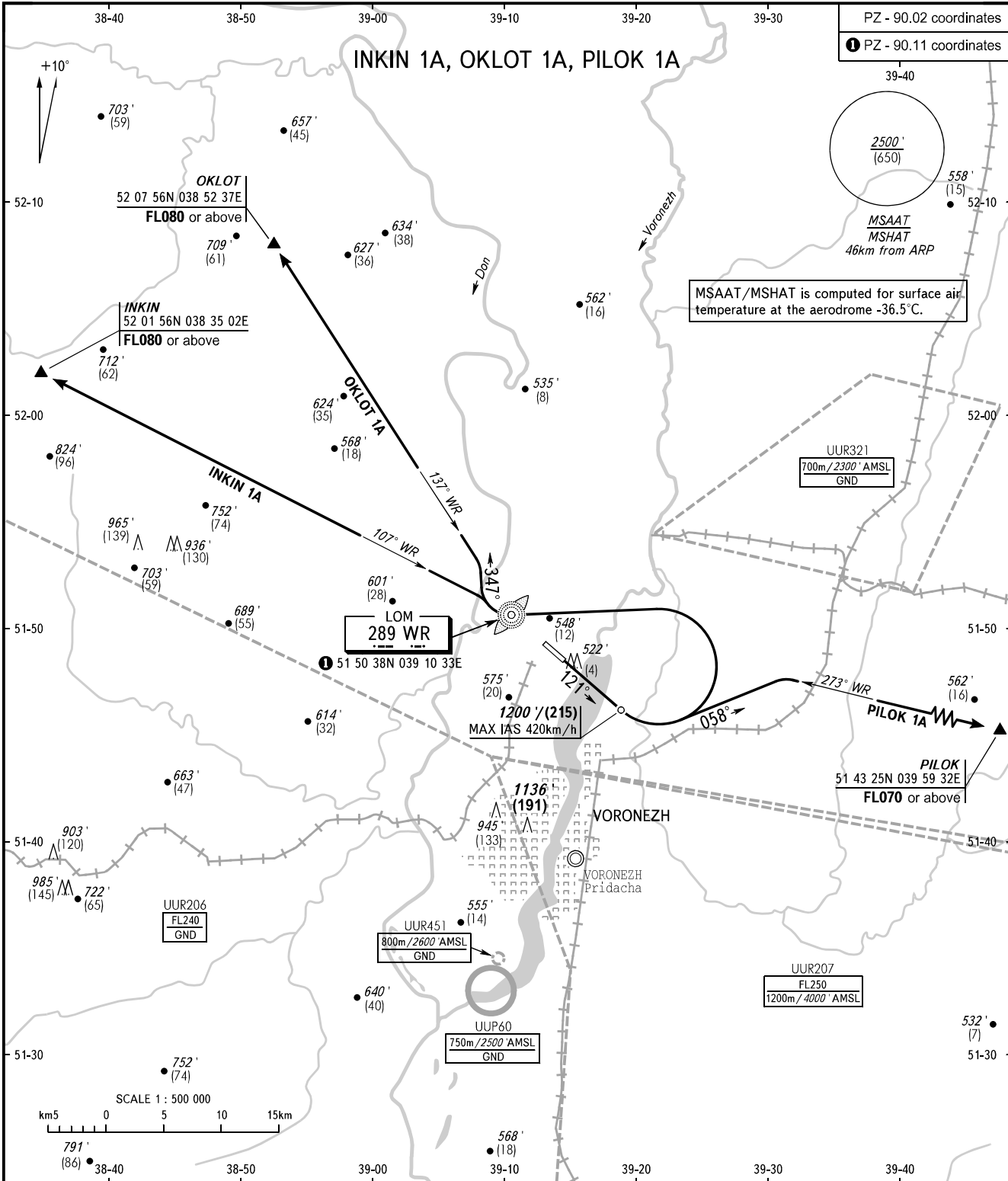


STANDARD DEPARTURE CHART
INSTRUMENT (SID) - ICAO

TRANSITION ALT: **5000'**
TRANSITION HGT: **(1370)**

VORONEZH, RUSSIA
CHERTOVITSKOYE
RWY 12



PZ - 90.02 coordinates
① PZ - 90.11 coordinates

MSAAT/MSHAT is computed for surface air temperature at the aerodrome -36.5°C.

TOWER **118.300**

MINIMUM CLIMB GRADIENT (due to airspace structure):
PILOK 1A: 3.7% up to FL070.

BEARINGS AND TRACKS ARE MAGNETIC ALTITUDES IN FEET HEIGHTS IN METRES ELEVATIONS IN FEET AND METRES DISTANCES IN KILOMETRES	Alt set: -QNH(QFE on req); -hPa(mm on req).
--	--

CHANGE: New chart