

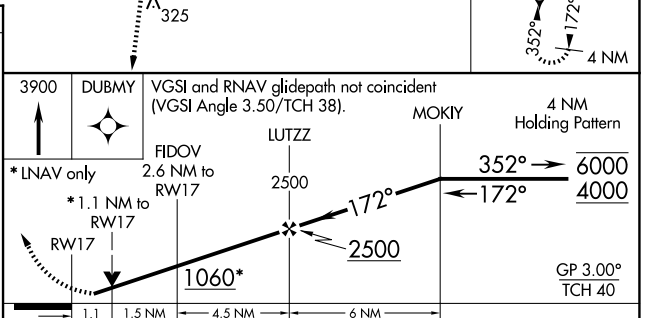
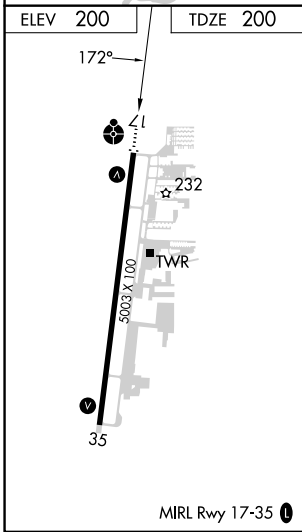
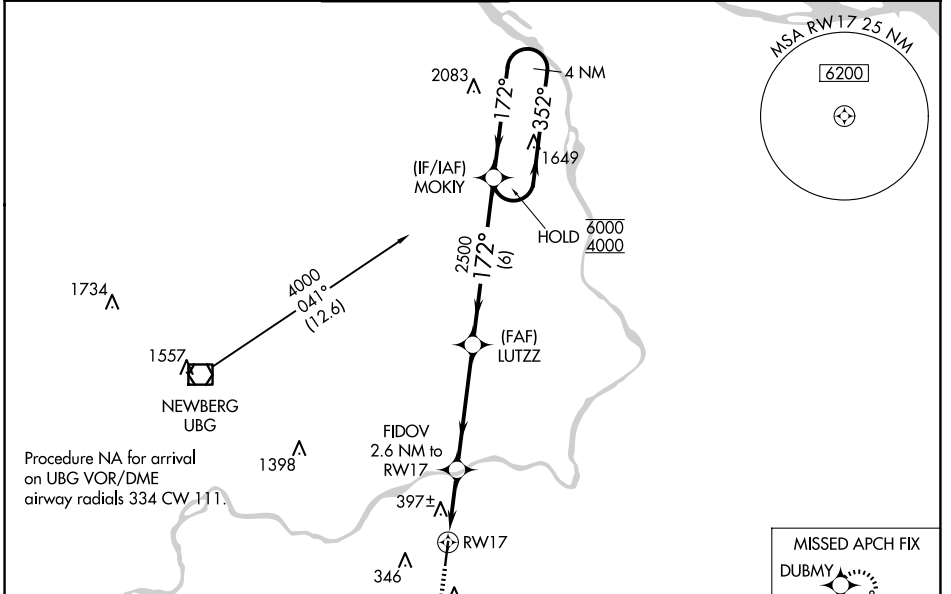
WAAS CH 70308 W17A	APP CRS 172°	Rwy Idg TDZE 200 Apt Elev 200	5003
--	------------------------	---	-------------

RNAV (GPS) RWY 17

AURORA STATE (UAO)

RNP APCH.	<p>⚠ Rwy 17 helicopter visibility reduction below 3/4 SM NA. For uncompensated Baro-VNAV systems, LNAV/VNAV NA below -6°C or above 54°C. For inop ALS, increase LNAV/VNAV Cat A/B and LNAV Cat C/D visibility to 1 1/8 SM. Inop table does not apply to LPV and LNAV Cat A/B.</p>	ODALS 	MISSED APPROACH: Climb to 3900 direct DUBMY and hold, continue climb-in-hold to 3900.
-----------	--	-----------	---

ATIS 118.525	PORTLAND APP CON 126.0 269.175	AURORA TOWER* 120.35 (CTAF) 0	GND CON 119.15	CLNC DEL 119.15	PORTLAND CLNC DEL 119.95 (When tower closed)
------------------------	--	---	--------------------------	---------------------------	---



CATEGORY	A	B	C	D
LPV DA		511-7/8	311 (400-7/8)	
LNAV/VNAV DA		661-1 1/4	461 (500-1 1/4)	
LNAV MDA	660-1	460 (500-1)	660-1 1/8	460 (500-1 1/8)
<input checked="" type="checkbox"/> CIRCLING	700-1	500 (500-1)	700-1 1/2 500 (500-1 1/2)	940-2 1/4 740 (800-2 1/4)

NW-1, 20 MAR 2025 to 17 APR 2025

NW-1, 20 MAR 2025 to 17 APR 2025