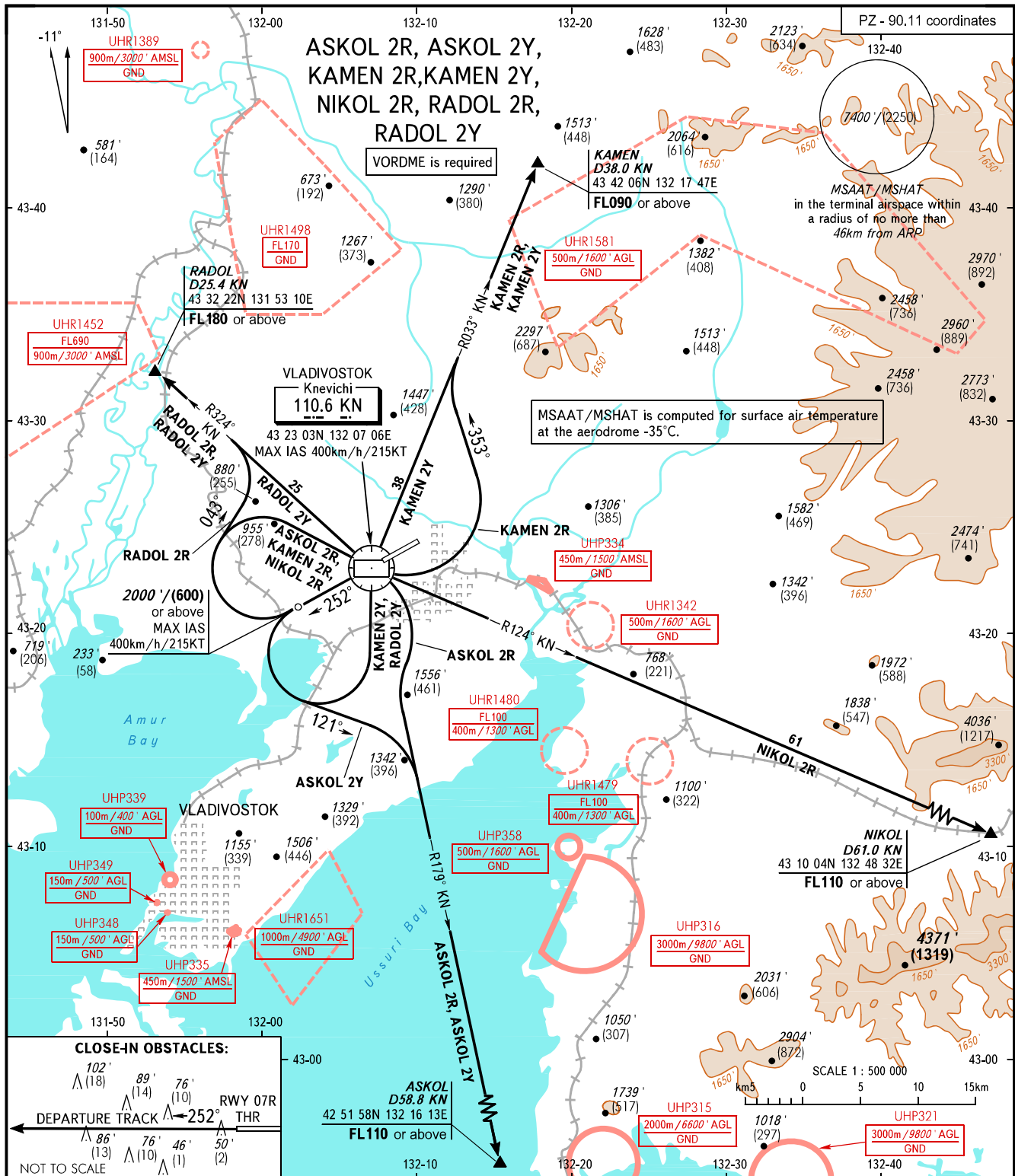


STANDARD DEPARTURE CHART
INSTRUMENT (SID) - ICAO

VLADIVOSTOK, RUSSIA
KNEVICH
RWY 25L

TRANSITION ALT: **8000'**
TRANSITION HGT: **(2430)**



CLOSE-IN OBSTACLES:

102' (18)	89' (14)	76' (10)	
RWY 07R			
DEPARTURE TRACK ← 252° THR			
86' (13)	76' (10)	46' (11)	50' (2)

NOT TO SCALE

VLADIVOSTOK START **119.500**
VLADIVOSTOK RADAR **123.400**

MINIMUM CLIMB GRADIENTS (due to airspace structure):
ASKOL 2R: 6.0% up to FL110;
ASKOL 2Y: 5.54% up to FL090 (8.8% up to 6300'/(1910), when UHR1651 is active);
KAMEN 2R, KAMEN 2Y: 5.5% up to 3300'/(995);
NIKOL 2R: 5.5% up to 3300'/(995) (7.1% up to FL110, when UHR1479 is active);
RADOL 2R: 11.1% up to FL180;
RADOL 2Y: 5.5% up to 3300'/(995) (13.1% up to FL180, when UHR1498 is active).

BEARINGS AND TRACKS ARE MAGNETIC
ALTITUDES IN FEET
HEIGHTS IN METRES
ELEVATIONS IN FEET AND METRES
DISTANCES IN KILOMETRES

Alt set: -QNH(QFE on req);
-hPa(mm on req).

WARNING:
1. Turn before passing DER is PROHIBITED.
2. Close-in obstacles are AVBL.