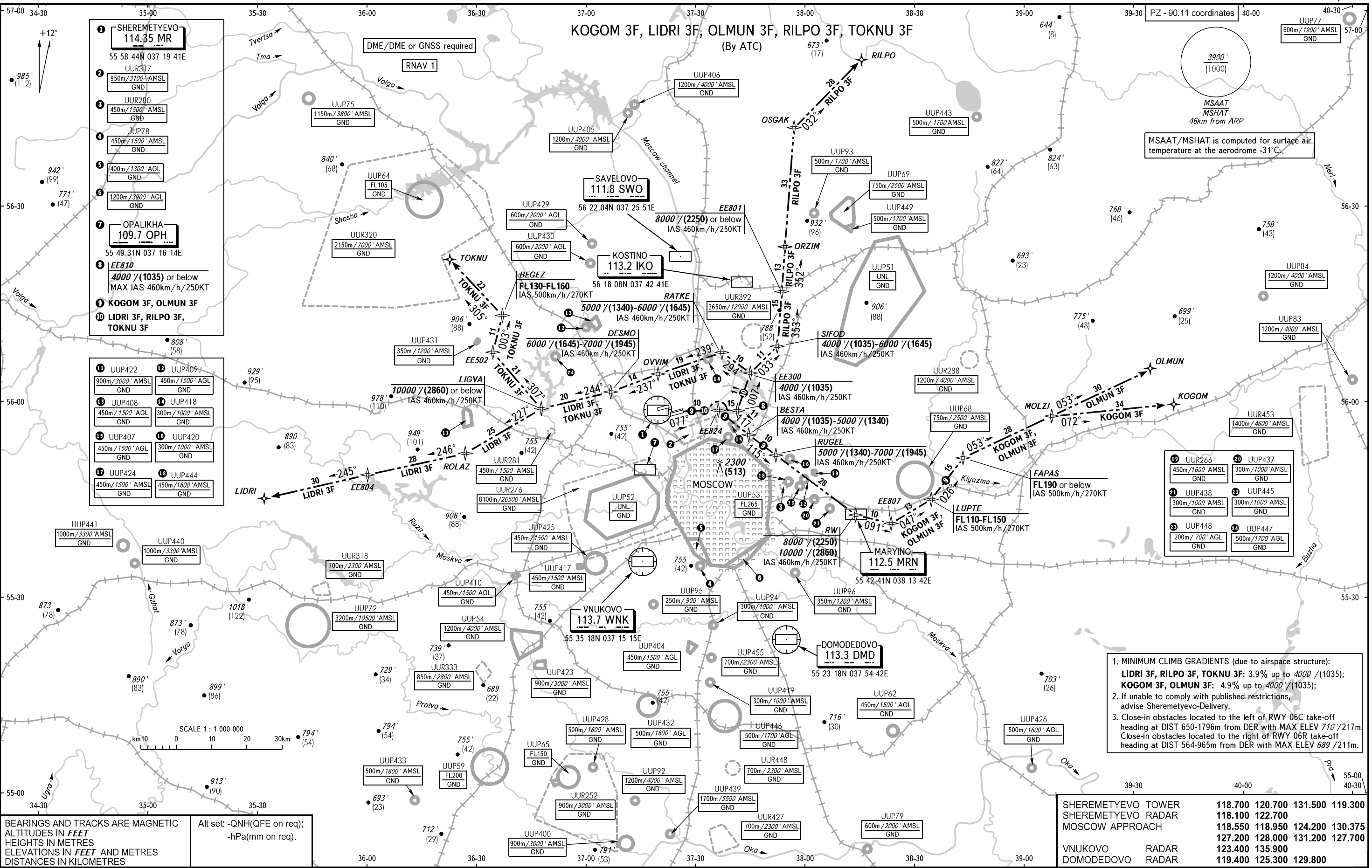


MOSCOW, RUSSIA  
SHEREMETYEVO  
RNAV RWY 06C, 06R

AIP  
RUSSIA  
STANDARD DEPARTURE CHART  
INSTRUMENT (SID) - ICAO

TRANSITION ALT: **10000'**  
TRANSITION HGT: **(2860)**



- MINIMUM CLIMB GRADIENTS (due to airspace structure):  
**LIDRI 3F, RILPO 3F, TOKNU 3F:** 3.9% up to 4000'/(1035);  
**KOGOM 3F, OLMUN 3F:** 4.9% up to 4000'/(1035);
- If unable to comply with published restrictions, advise Sheremetyevo-Delivery.
- Close-in obstacles located to the left of RWY 06C take-off heading at DIST 650-1796m from DER with MAX ELEV 710'/217m  
 Close-in obstacles located to the right of RWY 06R take-off heading at DIST 564-965m from DER with MAX ELEV 689'/211m.

SHEREMETYEVO TOWER	118.700	120.700	131.500	119.300
SHEREMETYEVO RADAR	118.100	122.700		
MOSCOW APPROACH	118.550	118.950	124.200	130.375
	127.200	128.000	131.200	127.700
VNUKOVO RADAR	123.400	135.900		
DOMODEDOVO RADAR	119.400	125.300	129.800	

BEARINGS AND TRACKS ARE MAGNETIC  
 ALTITUDES IN FEET  
 HEIGHTS IN METRES  
 ELEVATIONS IN FEET AND METRES  
 DISTANCES IN KILOMETRES

Alt set: -QNH(QFE on req);  
 -hPa(mm on req).