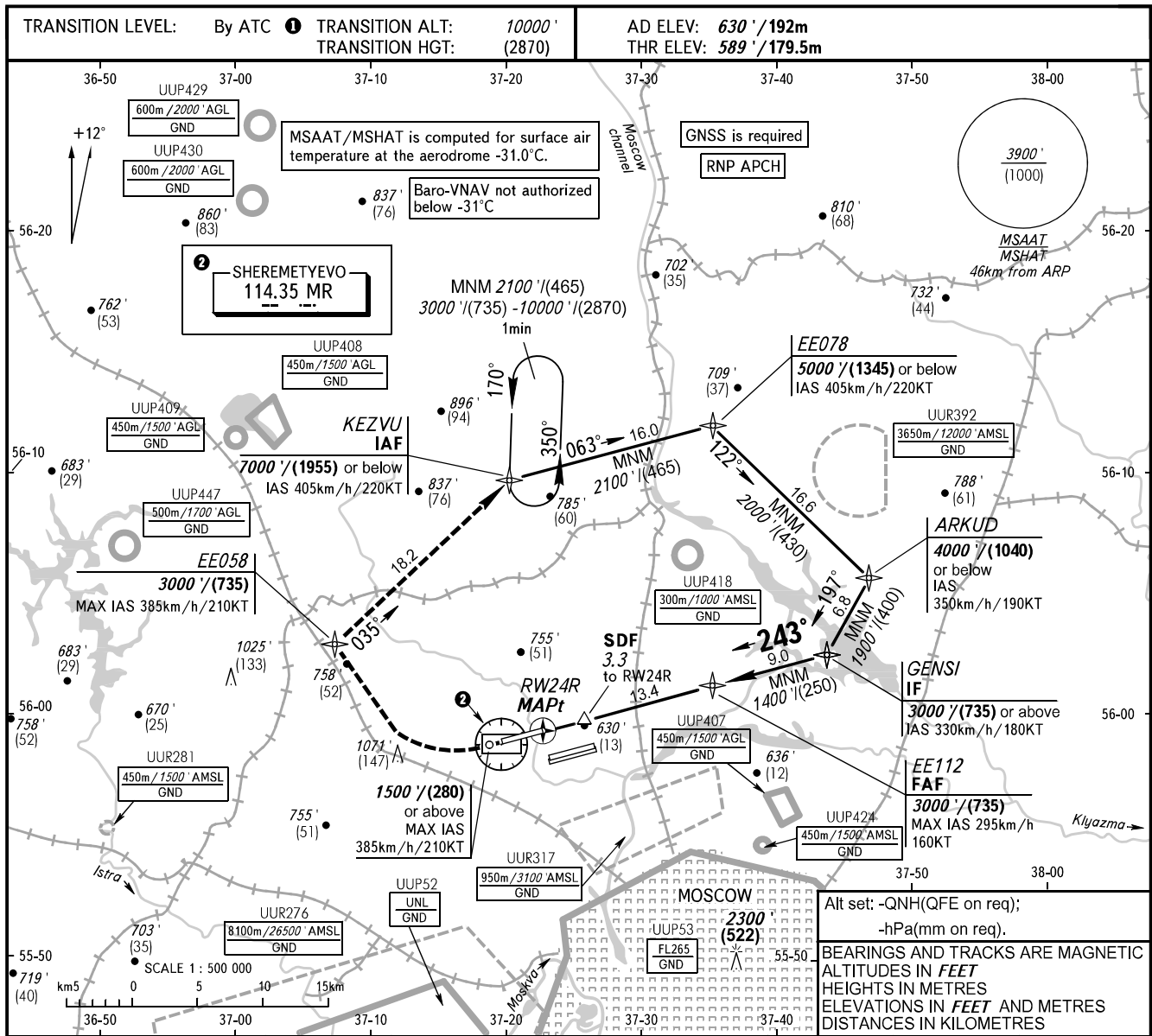


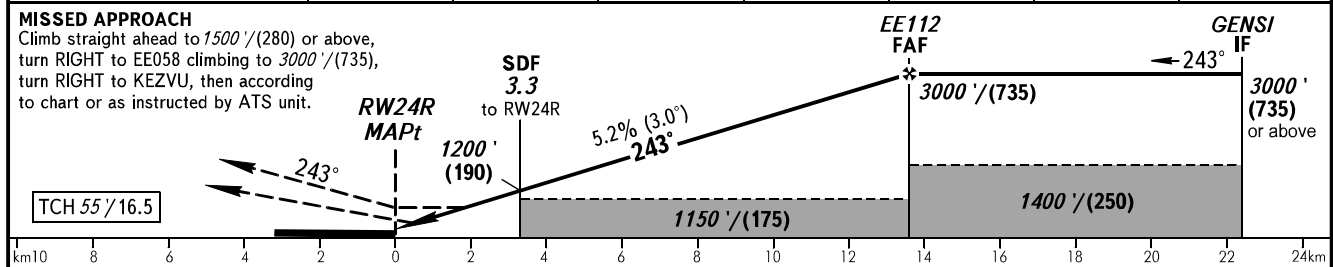
**INSTRUMENT  
APPROACH  
CHART - ICAO**

SHEREMETYEVO RADAR 118.100 120.675 122.700 126.600 135.175  
SHEREMETYEVO TOWER 118.700 120.700 131.500

**MOSCOW, RUSSIA**  
**SHEREMETYEVO**  
**RNP RWY 24R**



DIST to RW24R	2.0	4.0	6.0	8.0	10.0	12.0	13.6
ALTITUDE/HEIGHT	980' / (120)	1330' / (225)	1670' / (330)	2010' / (435)	2350' / (535)	2690' / (640)	3000' / (735)



OCA(H)		A	B	C	D	① TRANSITION LEVEL:										
Straight-in Approach	MNM climb gradient for missed APCH	LNAV	1060' (480') (150)	1060' (480') (150)	1060' (480') (150)	1060' (480') (150)	- FL110 when QNH is 1013 hPa (760mm mercury column) or above;									
		LNAV/VNAV	960' (380') (120)	980' (400') (125)	990' (410') (125)	1000' (420') (130)	- FL120 when QNH is 977 hPa (733mm mercury column) or above, but less than 1013 hPa (760mm mercury column);									
GROUND SPEED		km/h	150	180	210	240	270	300	330	360	390	420	450	- FL130 when QNH is less than 977 hPa (733mm mercury column).		
RATE OF DESCENT		m/s	2.2	2.6	3.0	3.5	3.9	4.3	4.8	5.2	5.6	6.1	6.5			
		ft/min	427	512	597	683	768	853	939	1024	1109	1195	1280			