

WRIGHTSTOWN, NEW JERSEY

# ILS or LOC RWY 24

LOC I-JTQ <b>110.1</b>	APCH CRS <b>238°</b>	Rwy Idg <b>10,014</b>	TDZE <b>117</b>
		Arprt Elev <b>141</b>	

AL-150 (USAF)  
MC GUIRE FIELD (JOINT BASE MC GUIRE DIX LAKEHURST) (KWRI)

**V** \* When ALS inop, increase RVR to 40, vis to 3/4 mile. +RVR 18 authorized with use of FD or AP or HUD to DA.  
\*\* When ALS inop, increase CAT AB RVR to 55, vis to 1 mile, CAT CDE vis to 1 3/8 miles.  
\*\*\* Circling NA SE of Rwy 24 and E of Rwy 36 when R-5001 A/B Active.

ALSF-1 MISSED APPROACH: Climb to 2000 via GXU R-236 to CISON and hold.  
**(A1)**

ATIS <b>110.6 270.1</b>	MC GUIRE APP CON/DEP CON <b>126.475 363.8</b>	TOWER <b>118.65 255.6</b>	GND CON <b>121.8 275.8</b>	CLNC DEL <b>135.2 335.8</b>	PAR
----------------------------	--	------------------------------	-------------------------------	--------------------------------	-----

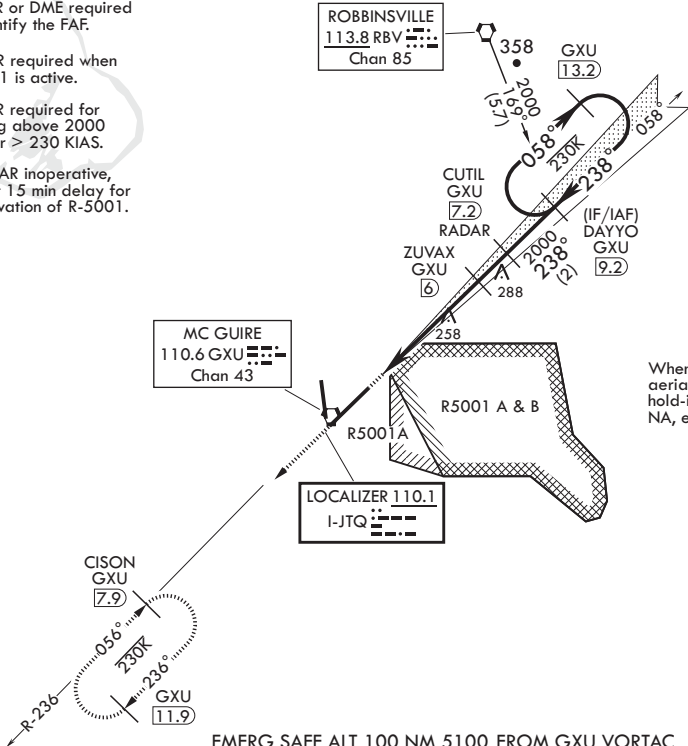
RADAR or DME required to identify the FAF.

RADAR required when R-5001 is active.

RADAR required for holding above 2000 and/or > 230 KIAS.

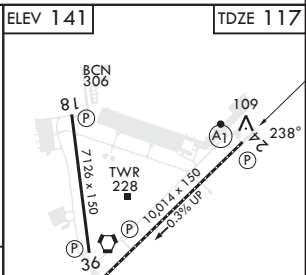
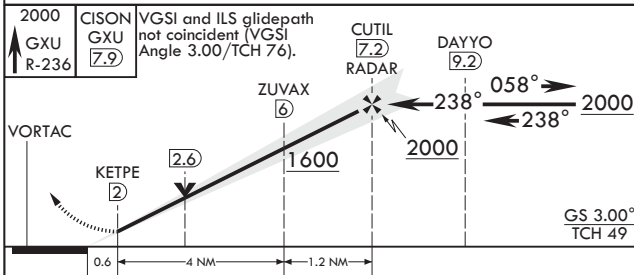
If RADAR inoperative, expect 15 min delay for deactivation of R-5001.

ROBBINSVILLE  
113.8 RBV  
Chan 85



When R-5001 is active with aerial gunnery, DAYYO hold-in-lieu of procedure turn NA, expect RADAR vectors.

EMERG SAFE ALT 100 NM 5100 FROM GXU VORTAC



CATEGORY	A	B	C	D	E
S-ILS 24*†	317/24		200	(200-½)	
S-LOC 24**	580/24	463 (500-½)	580/50	463	(500-1)
<b>C</b> CIRCLING***	680-1 539 (600-1)		700-1½ 559 (600-1½)	700-2 559 (600-2)	1200-3 1059 (1100-3)

ELEV 141	TDZE 117
HIRL all Rwys REIL Rwys 18, 36 TDZL/CL Rwy 6	
FAF to MAP 5.2 NM	
Knots	60 90 120 150 180
Min:Sec	5:12 3:28 2:36 2:05 1:44

WRIGHTSTOWN, NEW JERSEY

MC GUIRE FIELD (JOINT BASE MC GUIRE DIX LAKEHURST) (KWRI)

Amdt 6 18MAY23

40°01'N - 74°36'W

# ILS or LOC RWY 24

NE-2, 20 MAR 2025 to 17 APR 2025

NE-2, 20 MAR 2025 to 17 APR 2025