

PANAMA CITY, FLORIDA

RNAV (GPS) RWY 14L

WAAS CH 71271 W14A	APCH CRS 138°	Rwy ldg 10,008	TDZE 14	Arpt Elev 17
--------------------------	------------------	-------------------	------------	-----------------

- (USAF)

TYNDALL AFB (KPAM)

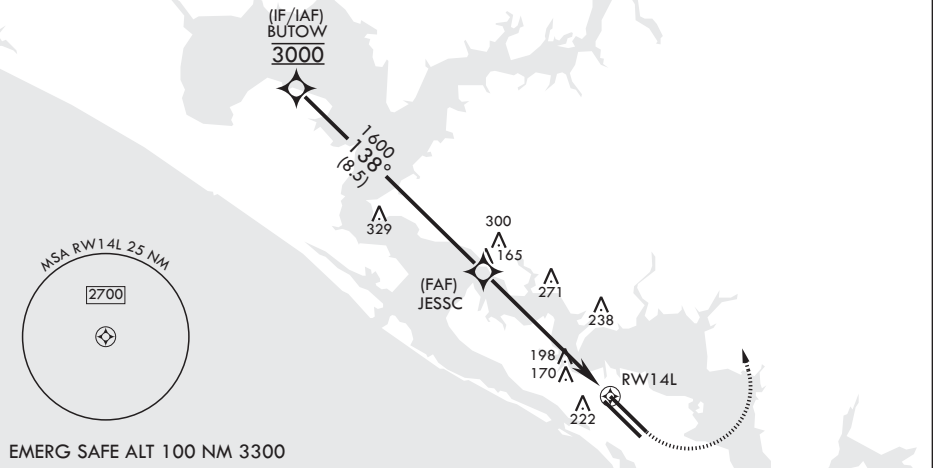
RNP APCH	ALSF-1	MISSED APPROACH: Climb to 600 then climbing left turn to 3000 direct NENCY and hold.
<p>▼ * When ALS inop increase RVR to 40, vis to 3/4 mile. ** When ALS inop increase RVR to 45, vis to 7/8 mile.</p>		

ATIS* 254.4	APP CON/DEP CON 119.775 317.45 BLW 5000' 124.15 338.35 ABV 5000'	TOWER* 133.95 263.15	GND CON 121.9 259.3	CLNC DEL 118.05 348.7	ASR/PAR
----------------	--	-------------------------	------------------------	--------------------------	---------

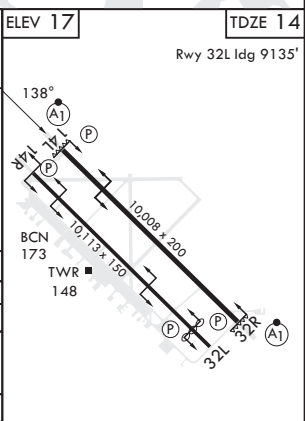
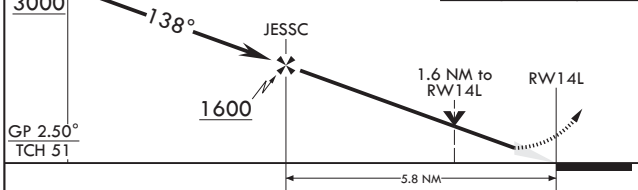
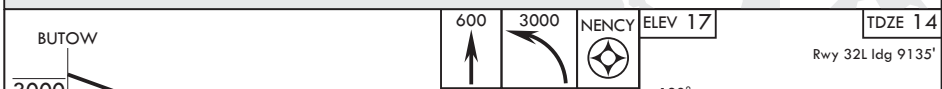
*** When ALS inop increase CAT AB RVR to 55, vis to 1 mile; CAT CDE vis to 1 3/8 miles.

For uncompensated Baro-VNAV systems, Procedure NA below 15°C (59°F) or above 54°C (130°F).

Average Cold Temperature based on standard -30.00°C ISA deviation.



EMERG SAFE ALT 100 NM 3300



CATEGORY	A	B	C	D	E
LPV DA*	214/24		200	(200-½)	
LNAV/VNAV DA**	276/24 262 (300-½)	287/24 273 (300-½)	295/24 281 (300-½)	306/24 292 (300-½)	
LNAV MDA***	500/24 486 (500-½)		500/50	486	(500-1)
☐ CIRCLING	540-1 523 (600-1)		540-1½ 523 (600-½)	580-2 563 (600-2)	620-2¼ 603 (700-2¼)

HIRL all Rwy's
Recommend Rwy 14L-32R for
apch end engagement of A-Gear.

PANAMA CITY, FLORIDA

30°04'N - 85°34'W

TYNDALL AFB (KPAM)

Amdt 4 20MAY21

RNAV (GPS) RWY 14L

SE-3, 20 MAR 2025 to 17 APR 2025

SE-3, 20 MAR 2025 to 17 APR 2025