

HI-TACAN RWY 31

TACAN Chan 53	APCH CRS 304°	Rwy ldg 12,803 TDZE 1037 Arprt Elev 1078
-------------------------	-------------------------	---

[USAF]

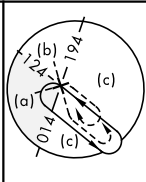
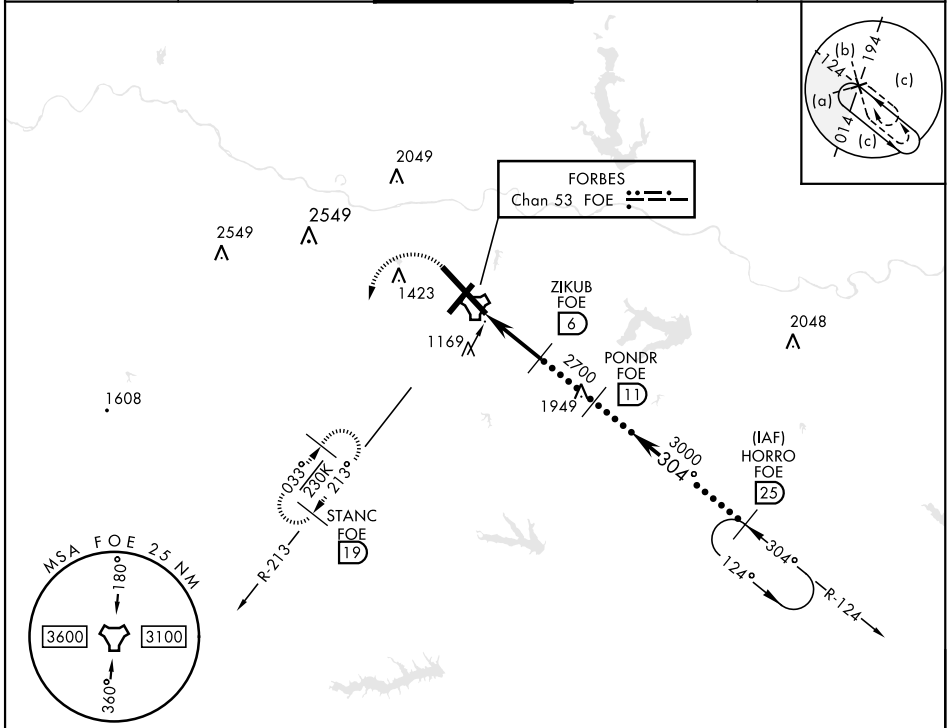
TOPEKA RGNL (KFOE)

V * When ALS inop, increase CAT CDE vis to 1½ miles.



MISSED APPROACH: Climbing left turn to 3000 via heading 190° and FOE TACAN R-213 to STANC/19 DME and hold.

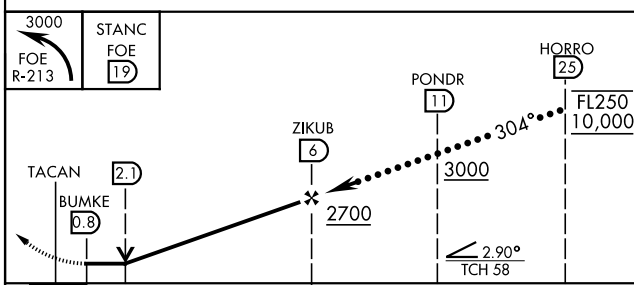
ATIS 128.25	KANSAS CITY CENTER 123.8 343.7	FORBES TOWER ★ 120.8 (CTAF) 340.2	GND CON 118.425 275.8	UNICOM 122.95
-----------------------	--	---	---------------------------------	-------------------------



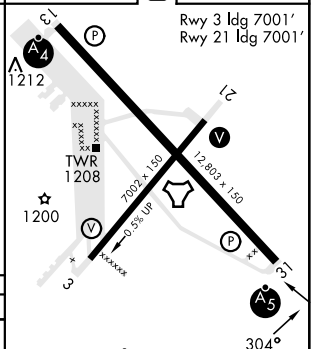
NC-2, 20 MAR 2025 to 17 APR 2025

NC-2, 20 MAR 2025 to 17 APR 2025

EMERG SAFE ALT 100 NM 3600



ELEV 1078	TDZE 1037
-----------	-----------



CATEGORY	C	D	E
S-31 *	1520/50	483 (500-1)	
CIRCLING	1580-1½ 502 (600-1½)	1700-2 622 (700-2)	1720-2¼ 642 (700-2¼)

HI-TACAN RWY 31