

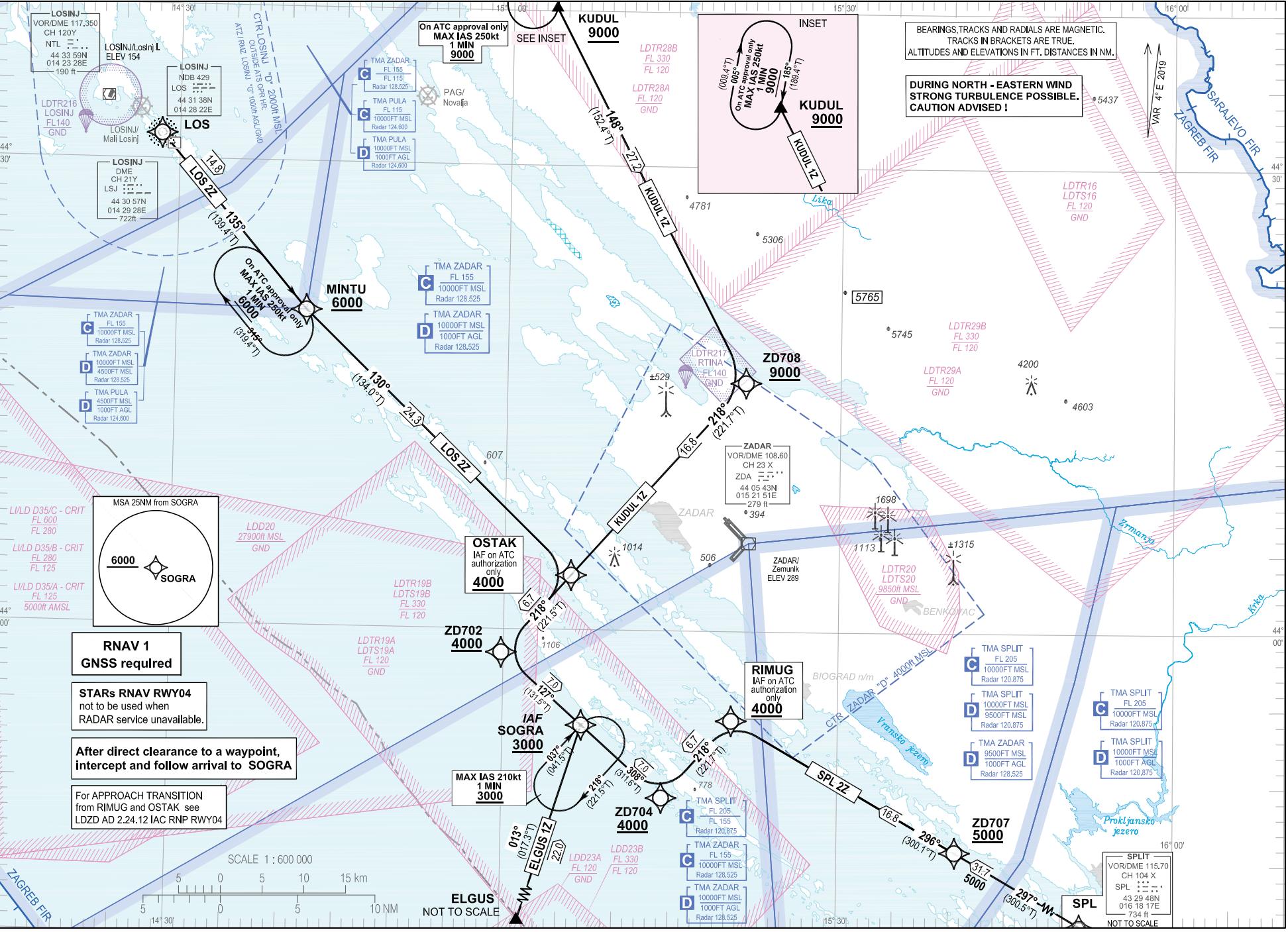
STANDARD ARRIVAL CHART
INSTRUMENT (STAR) - ICAO

TRANSITION ALTITUDE
10 000

ZADAR RADAR 128.525
ZADAR TOWER 123.700
ZADAR DELIVERY 132.975

ZADAR / Zemunik (LDZD)
RNAV RWY 04
LOS ZZ KUDUL 1Z SPL ZZ ELGUS 1Z

CHANGE: TMA classification vertical limits; Parachuting zones added; Notes; Editorial.



ZADAR / Zemunik (LDZD)
RNAV RWY 04

LOS 2Z KUDUL 1Z SPL 2Z ELGUS 1Z

LDZD RNAV STANDARD ARRIVAL RWY 04

Proposed tabular description for navigation database coding

Serial number	Route	Path descriptor	Waypoint name	Flyover	Course °M (°T)	Magnetic variation	Distance (NM)	Turn direction	Altitude (ft)	Speed (kt)	Remarks	NAV SPEC
010	LOS 2Z	IF	LOS	-	-	4°E	-	-	-	-	-	RNAV 1
020		TF	MINTU	-	135° (139.4°T)	4°E	14.8	-	+6000	-	-	
030		TF	OSTAK	-	130° (134.0°T)	4°E	24.3	-	+4000	-	IAF on ATC authorization only	
040		TF	ZD702	-	218° (221.5°T)	4°E	6.7	-	+4000	-	-	
050		TF	SOGRA	-	127° (131.5°T)	4°E	7.0	-	+3000	-	IAF	
010	KUDUL 1Z	IF	KUDUL	-	-	4°E	-	-	+9000	-	-	RNAV 1
020		TF	ZD708	-	148° (152.4°T)	4°E	27.2	-	+9000	-	-	
030		TF	OSTAK	-	218° (221.7°T)	4°E	16.8	-	+4000	-	IAF on ATC authorization only	
040		TF	ZD702	-	218° (221.5°T)	4°E	6.7	-	+4000	-	-	
050		TF	SOGRA	-	127° (131.5°T)	4°E	7.0	-	+3000	-	IAF	
010	SPL 2Z	IF	SPL	-	-	4°E	-	-	-	-	-	RNAV 1
020		TF	ZD707	-	297° (300.5°T)	4°E	31.7	-	+5000	-	-	
030		TF	RIMUG	-	296° (300.1°T)	4°E	16.8	-	+4000	-	IAF on ATC authorization only	
040		TF	ZD704	-	218° (221.7°T)	4°E	6.7	-	+4000	-	-	
050		TF	SOGRA	-	308° (311.6°T)	4°E	7.0	-	+3000	-	IAF	
010	ELGUS 1Z	IF	ELGUS	-	-	4°E	-	-	-	-	-	RNAV 1
020		TF	SOGRA	-	013° (017.3°T)	4°E	22.0	-	+3000	-	IAF	

IAF on ATC authorization only: For APPROACH TRANSITION from RIMUG and OSTAK see LDZD AD 2.24.12 IAC RNP RWY 04

CHANGE: TMA's classification vertical limits; Parachuting zones added; Notes; Editorial.

RNAV HOLDING tabular description

Waypoint name	Path descriptor	Inbound course °M (°T)	Leg time/ distance (NM)	Turn direction	Minimum altitude (ft)	Maximum altitude (ft)	Speed limit MAX IAS (kt)	Magnetic variation	Remarks	NAV SPEC
MINTU	HM	135° (139.4°T)	1 MIN / -	R	6000	-	250	4°E	On ATC approval only	RNAV 1
KUDUL	HM	185° (189.4°T)	1 MIN / -	R	9000	-	250	4°E	On ATC approval only	RNAV 1
SOGRA	HM	037° (041.5°T)	1 MIN / -	R	3000	-	210	4°E	-	RNAV 1

Waypoint coordinates

Waypoint name	WGS-84 latitude	WGS-84 longitude
LOS	443137.55N	0142822.25E
SPL	432947.69N	0161817.00E
ELGUS	433252N	0145800E
MINTU	442024N	0144144E
OSTAK	440331.0N	0150557.8E
RIMUG	435413.2N	0152027.8E
SOGRA	435350.2N	0150702.6E
KUDUL	444011N	0150355E
ZD702	435828.7N	0145947.5E
ZD704	434911.7N	0151417.2E
ZD707	434549.7N	0154033.0E
ZD708	441604.3N	0152126.9E

CHANGE: TMA classification vertical limits; Parachuting zones added; Notes; Editorial.

OVA STRANICA JE NAMJERNO OSTAVLJENA PRAZNA
THIS PAGE INTENTIONALLY LEFT BLANK