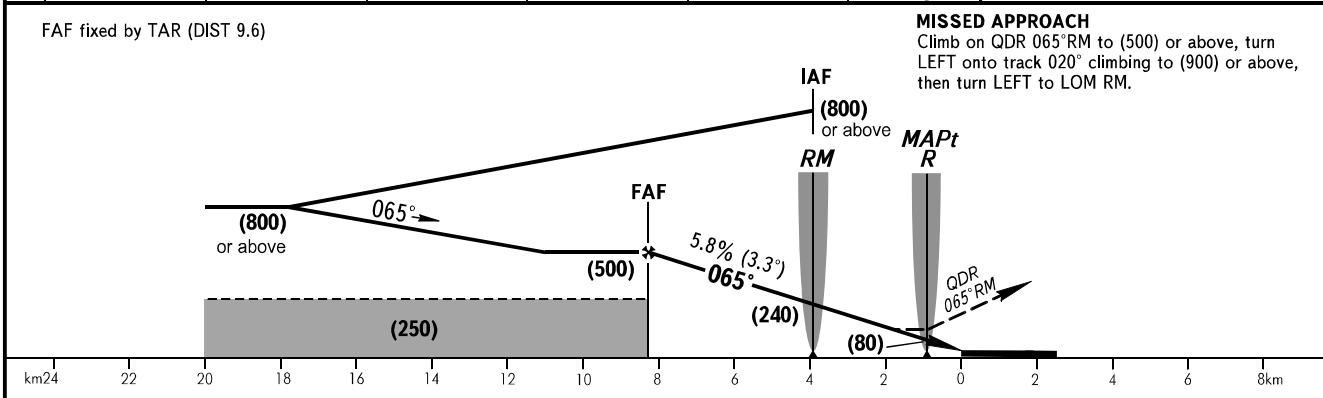
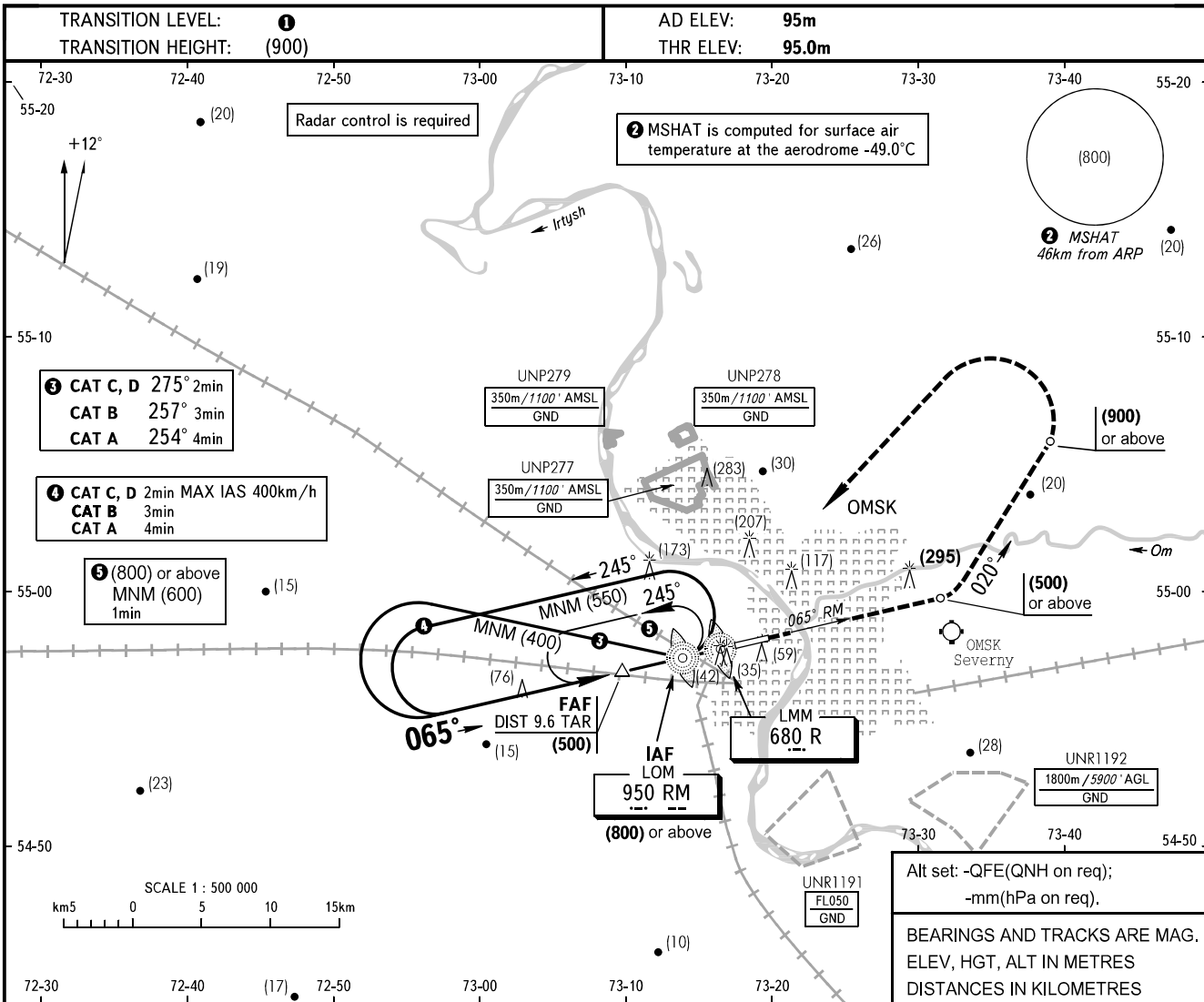


**INSTRUMENT  
APPROACH  
CHART - ICAO**

RADAR **119.000**  
START **119.000**

**OMSK, RUSSIA**  
TSENTRALNY  
NDB RWY 07



OCA(H)		A	B	C	D					
Straight-in	Approach	215 (120)	215 (120)	215 (120)	215 (120)					
	Circling	245 (150)	305 (210)	425 (330)	425 (330)					
GROUND SPEED	km/h	150	180	210	240	270	300	330	360	390
RATE OF DESCENT	m/s	2.4	2.9	3.4	3.9	4.4	4.8	5.3	5.8	6.3

① **TRANSITION LEVEL:**  
- FL050 when QFE is 733mm mercury column or above;  
- FL060 when QFE is less than 733mm mercury column.

**WARNING:**  
1. When UNR1191 is active, holding area is AVBL at FL060 or above.  
2. MAPt at LMM R. Timing not authorized for defining MAPt.  
3. Turn before MAPt is PROHIBITED.

CHANGE: NIL