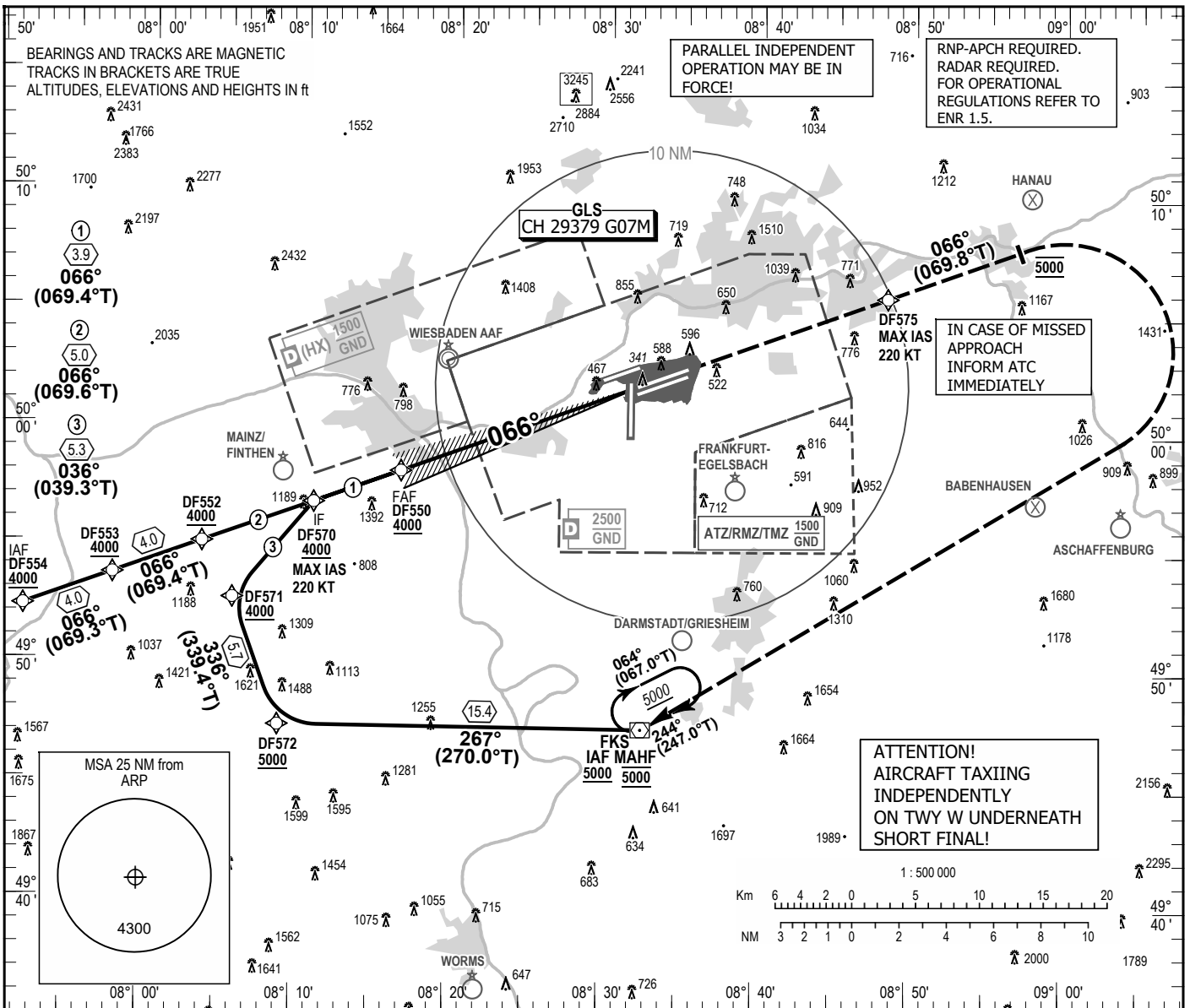


INSTRUMENT APPROACH
CHART - ICAO

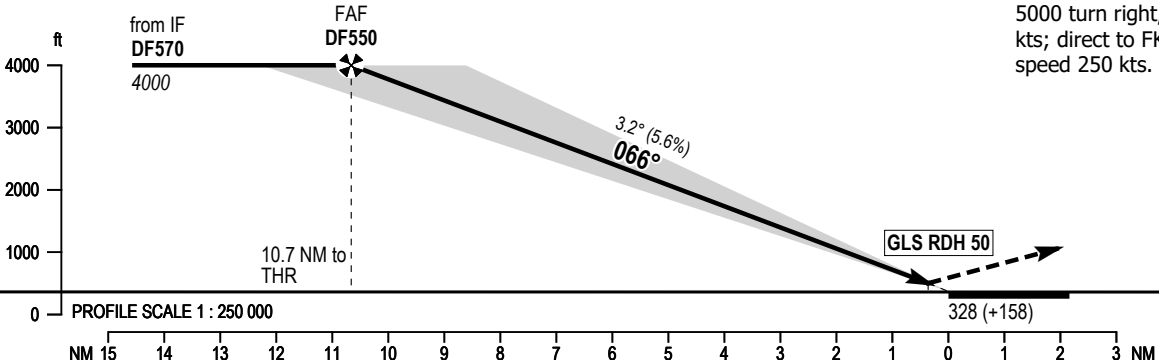
VAR 3° E
ELEV 363
OCH RELATED TO THR 07C ELEV 328

FRANKFURT ATIS	118.030	FRANKFURT TOWER	119.905
LANGEN RADAR	120.805	FRANKFURT GROUND	121.805
LANGEN RADAR	125.355	FRANKFURT APRON	121.755
FRANKFURT ARRIVAL	127.280	FRANKFURT APRON	121.955
FRANKFURT TOWER	118.780	FRANKFURT APRON	121.855

FRANKFURT MAIN
GLS Y CAT I & II
RWY 07C



MISSED APPROACH PROCEDURE
Direct to DF575, max. speed 220 kts; climb on course 066°, at 5000 turn right, max. speed 220 kts; direct to FKS at 5000, max. speed 250 kts.



OCA (OCH)	A	B	C	D	DL
GLS CAT I	470 (142)	483 (155)	491 (163)	501 (173)	501 (173)
GLS CAT II	382 (54)	400 (72)	412 (84)	426 (98)	426 (98)

DIST THR	10	9	8	7	6	5	4	3	2
ALTITUDE	3780	3440	3100	2760	2420	2080	1740	1400	1060

GS	kt	80	100	120	140	160	180
DF550 - THR (10.7 NM)	MIN:SEC	8:00	6:24	5:20	4:34	4:00	3:33
Rate of descent (5.6%)	ft/MIN	450	570	680	790	910	1020

Correction: Callsign.