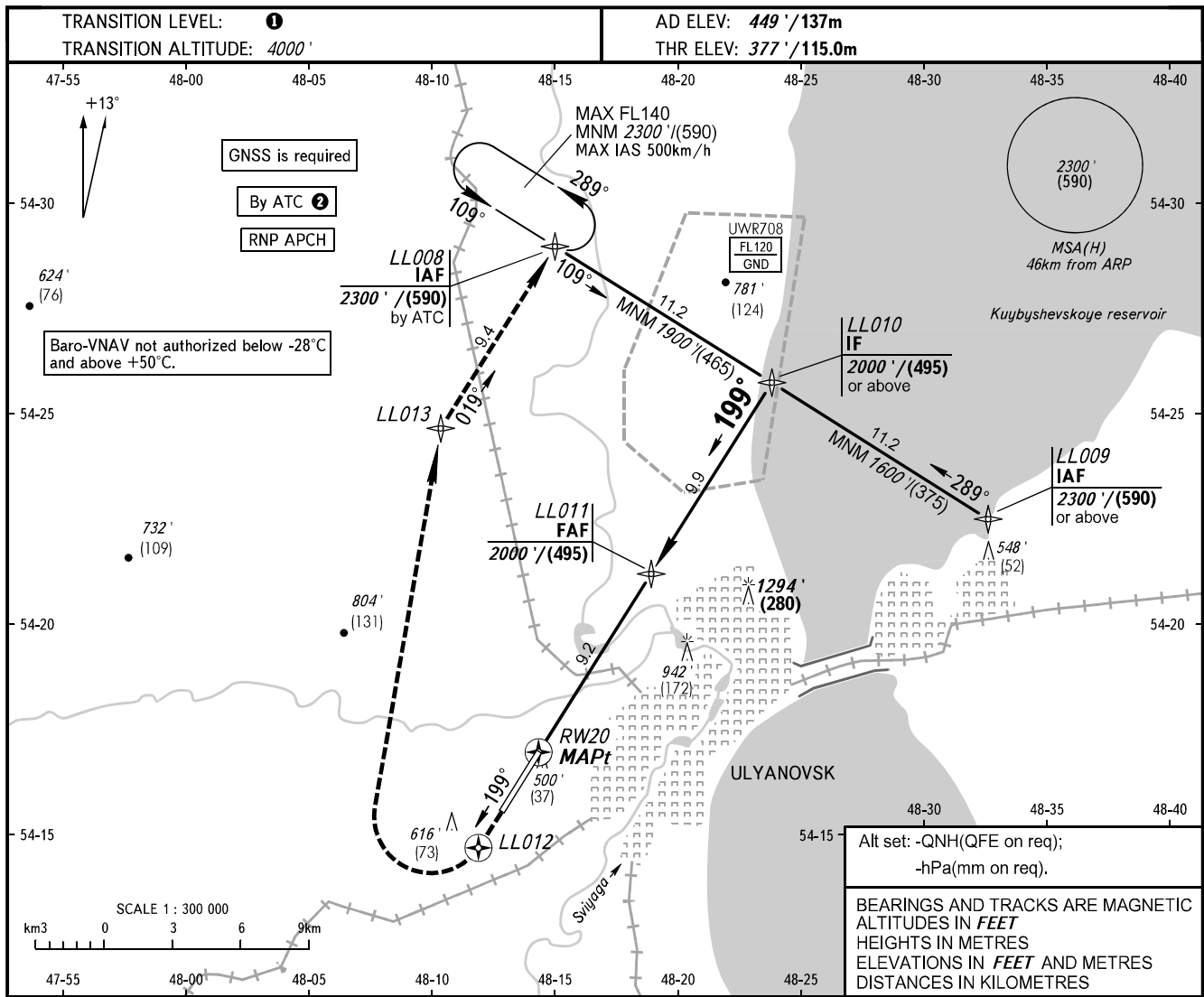


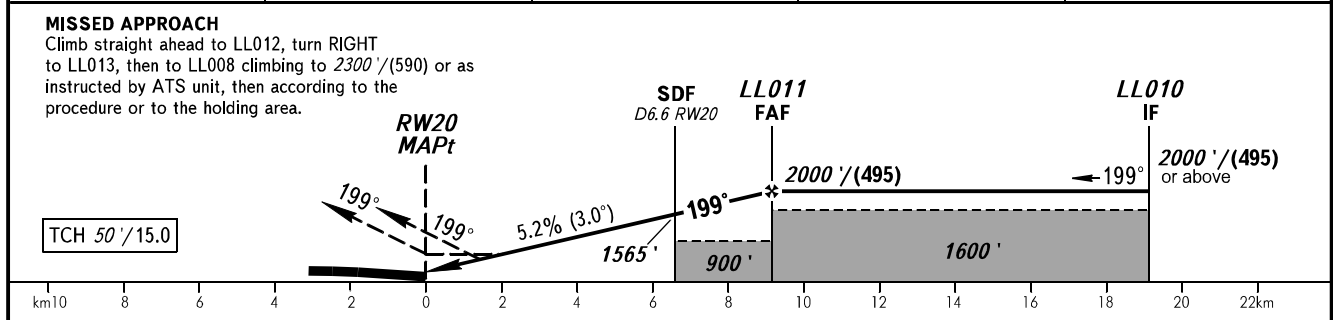
INSTRUMENT  
APPROACH  
CHART - ICAO

RADAR 120.800  
PRECISION 120.400

ULYANOVSK, RUSSIA  
BARATAYEVKA  
RNP RWY 20



DIST to RW20	3.0	5.0	7.0	9.0
ALTITUDE	940'	1280'	1620'	1960'



OCA(H)		A	B	C	D	① TRANSITION LEVEL: - FL050 when QNH is 1013 hPa (760mm mercury column) or above; - FL060 when QNH is 977 hPa (733mm mercury column) or above, but less than 1013 hPa (760mm mercury column); - FL070 when QNH is less than 977 hPa (733mm mercury column). ② When restricted area UWR708 is active. ③ Visual manoeuvring east of the AD is PROHIBITED.					
Straight-in	LNAV	750' (370')	750' (370')	750' (370')	750' (370')						
	LNAV/VNAV	622' (245')	632' (255')	647' (270')	661' (284')						
Circling		920' (470')	1010' (560')	1340' (890')	1340' (890')						
GROUND SPEED		km/h	150	180	210	240	270	300	330	360	390
RATE OF DESCENT		m/s	2.2	2.6	3.0	3.5	3.9	4.3	4.8	5.2	5.6
		ft/min	427	512	597	682	768	853	938	1024	1109