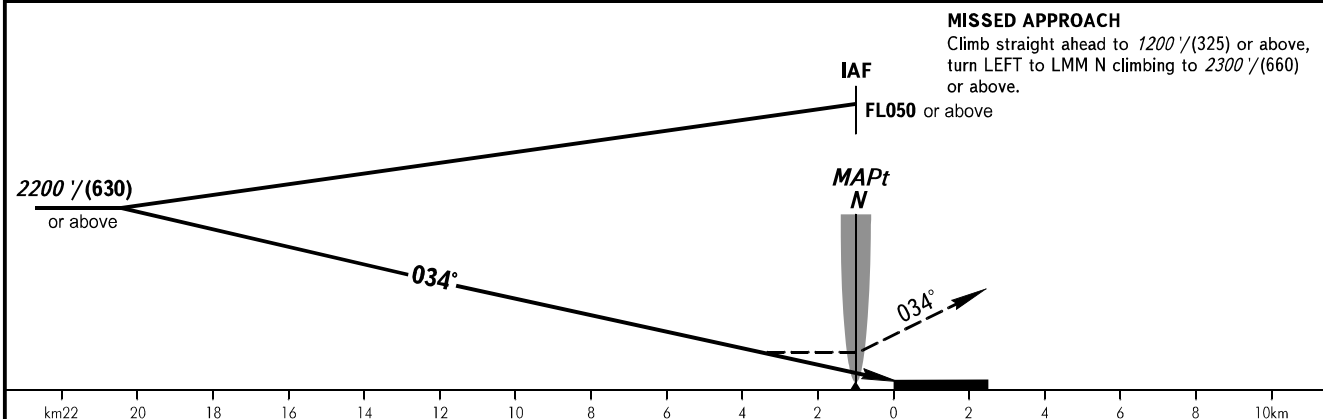
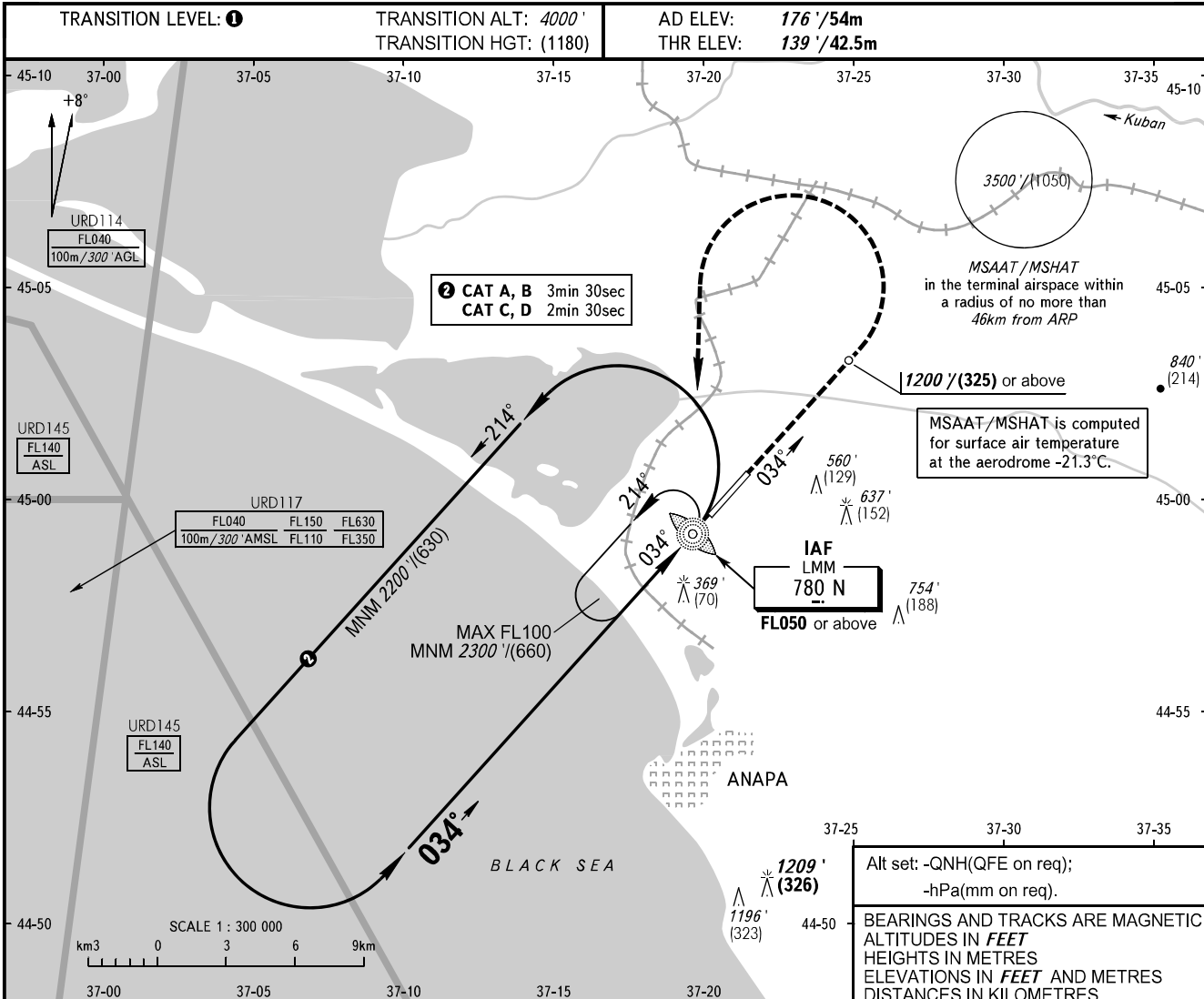


**INSTRUMENT  
APPROACH  
CHART - ICAO**

ANAPA RADAR **118.700**  
ANAPA TOWER **119.800**

**ANAPA, RUSSIA**  
VITYAZEVO  
NDB Y RWY 03



OCA(H)		A	B	C	D
Straight-in	Approach	600' (460') (140)	600' (460') (140)	600' (460') (140)	600' (460') (140)
	Circling	860' (680') (210)	940' (760') (235)	1040' (860') (265)	1150' (980') (300)

**① TRANSITION LEVEL:**

- FL050 when QNH is 1013 hPa (760mm mercury column) or above;
- FL060 when QNH is 977 hPa (733mm mercury column) or above, but less than 1013 hPa (760mm mercury column);
- FL070 when QNH is less than 977 hPa (733mm mercury column).

**WARNING**  
Turn before passing MAPt is PROHIBITED.  
MAPt at LMM N.  
Timing not authorized for defining MAPt.

CHANGE: URD145