

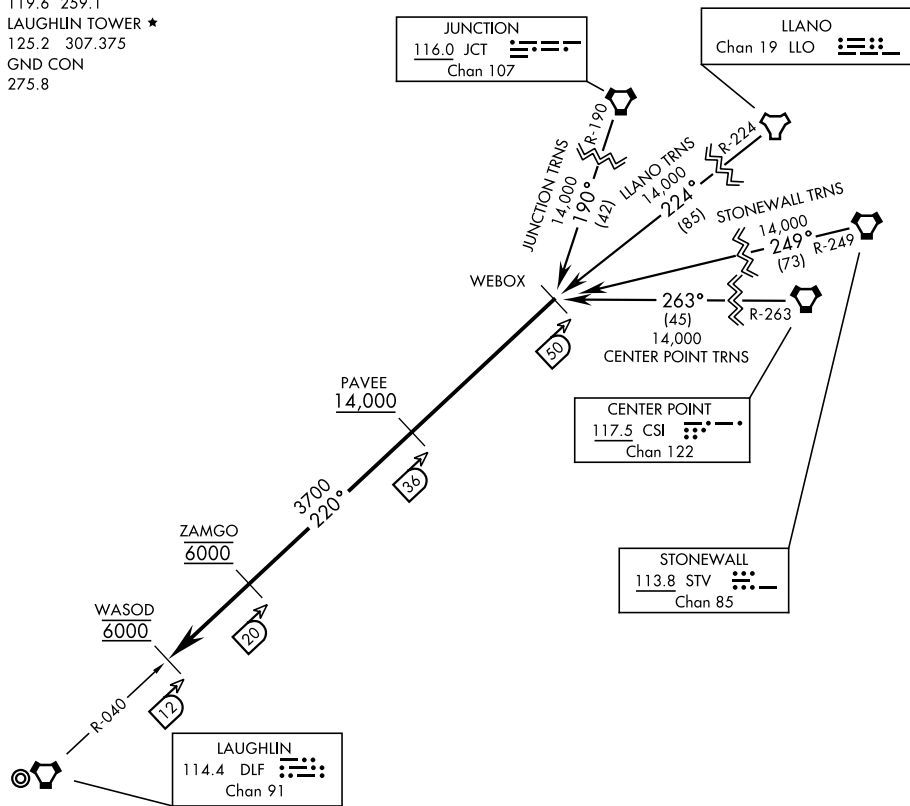
# WEBOX FOUR ARRIVAL (WEBOX.WEBOX4)

DEL RIO, TEXAS

ATIS ★ 114.4 269.9  
 DEL RIO APP CON  
 119.6 259.1  
 LAUGHLIN TOWER ★  
 125.2 307.375  
 GND CON  
 275.8

[USAF]

RADAR or DME required



SC-3, 20 MAR 2025 to 17 APR 2025

SC-3, 20 MAR 2025 to 17 APR 2025

## ARRIVAL ROUTE DESCRIPTION

CENTER POINT Transition (CSI.WEBOX4): From over CSI VORTAC via CSI R-263 to WEBOX. Thence...

JUNCTION Transition (JCT.WEBOX4): From over JCT VORTAC via JCT R-190 to WEBOX. Thence...

LLANO Transition (LLO.WEBOX4): From over LLO TACAN via LLO R-224 to WEBOX. Thence...

STONEWALL Transition (STV.WEBOX4): From over STV VORTAC via STV R-249 to WEBOX. Thence...

...from over DLF R-040/50 (WEBOX) via DLF R-040 to DLF R-040/12 (WASOD). Expect vectors for an instrument approach to runway in use.

# WEBOX FOUR ARRIVAL (WEBOX.WEBOX4)

DEL RIO, TEXAS  
LAUGHLIN AFB