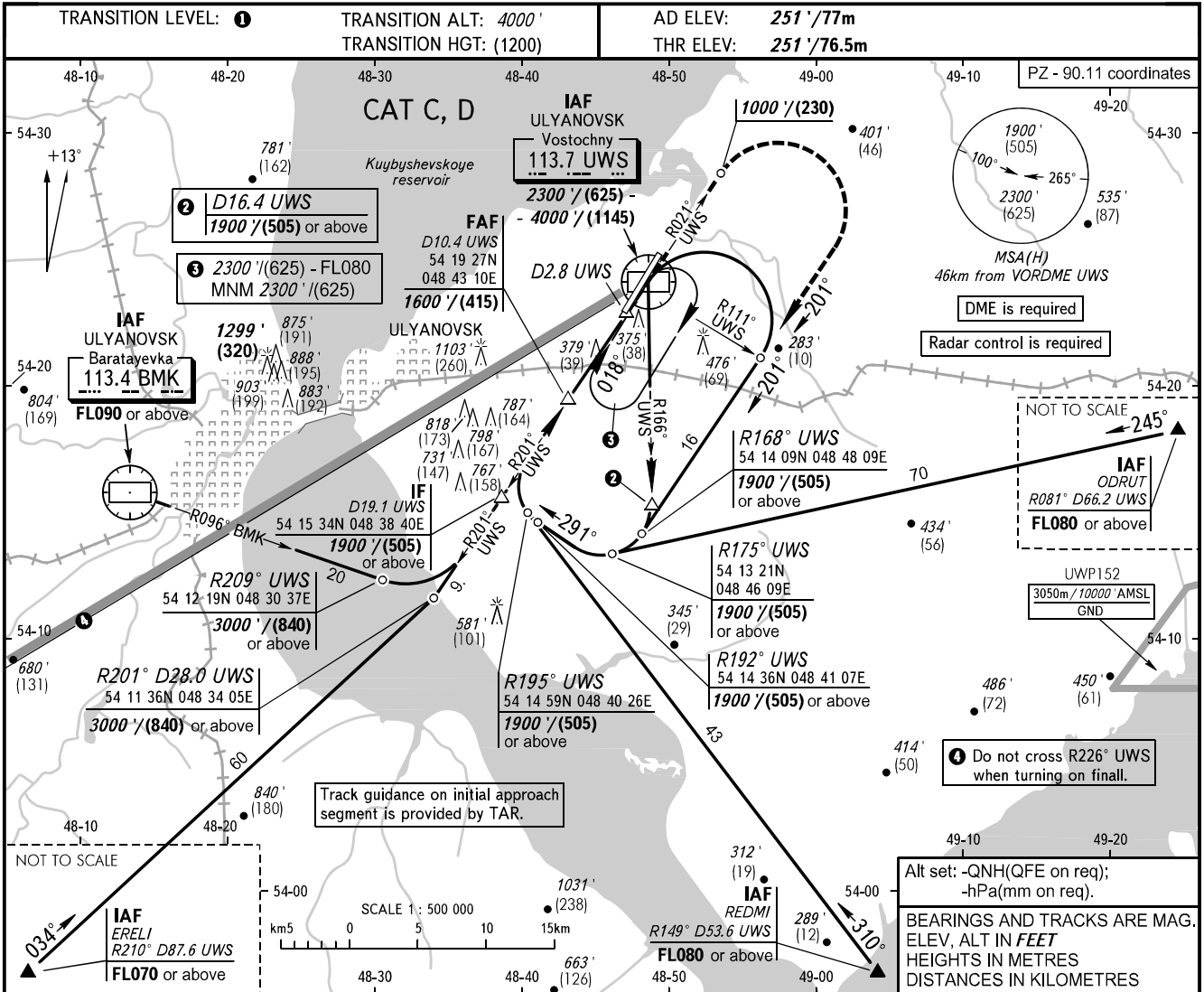


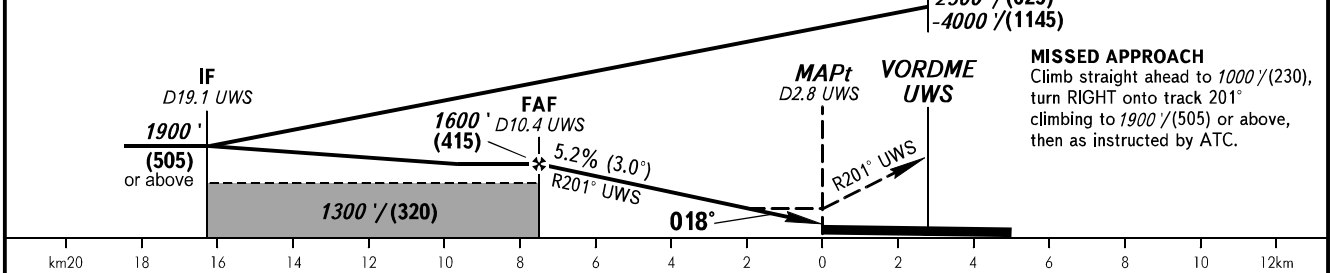
INSTRUMENT
APPROACH
CHART - ICAO

VOSTOCHNY TOWER 124.200

ULYANOVSK, RUSSIA
VOSTOCHNY
VOR X RWY 02



DME UWS	10.0	8.0	6.0
ALTITUDE/HEIGHT	1530' / (390)	1190' / (287)	850' / (183)



OCA(H)	A	B	C	D
Straight-in Approach			630' (380') (120)	630' (380') (120)
Circling			870' (600') (190)	950' (700') (215)

① TRANSITION LEVEL:
- FL050 when QNH is 977 hPa (733mm mercury column) or above;
- FL060 when QNH is less than 977 hPa (733mm mercury column).

WARNING:
1. Visual manoeuvring north-west of the aerodrome is PROHIBITED.
2. Final approach segment is offset by 3° from RCL.

GROUND SPEED	km/h	150	180	210	240	270	300	330	360	390
	kt	81	97	113	130	146	162	178	194	211
RATE OF DESCENT	m/s	2.2	2.6	3.0	3.5	3.9	4.3	4.8	5.2	5.6
	ft/min	427	512	597	682	768	853	938	1024	1109