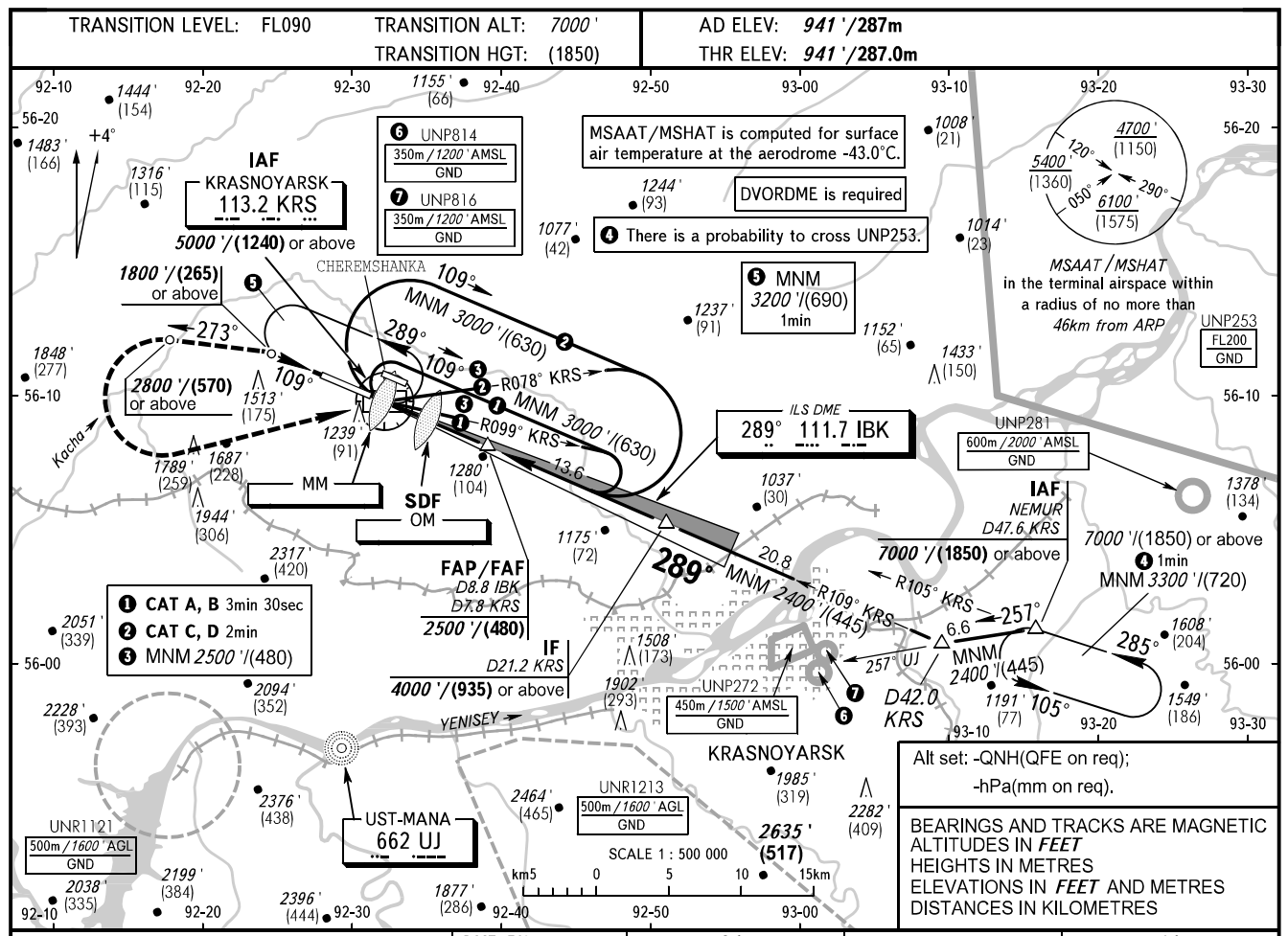


**INSTRUMENT
APPROACH
CHART - ICAO**

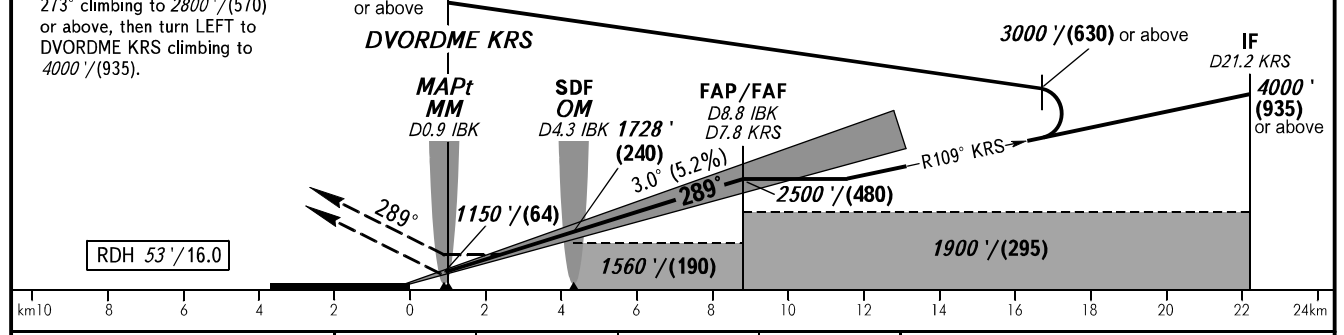
RADAR **122.000**
TOWER **118.300**

KRASNOYARSK, RUSSIA
KRASNOYARSK
ILS Y CAT I/II, LOC Y RWY 29



MISSED APPROACH
Climb straight ahead to 1800'/(265) or above, then proceed on track 273° climbing to 2800'/(570) or above, then turn LEFT to DVORDME KRS climbing to 4000'/(935).

DME IBK	8.0	6.0	4.0
ALTITUDE/HEIGHT	2367'/(435)	2023'/(330)	1679'/(225)
DME KRS	6.0	4.0	2.0
ALTITUDE/HEIGHT	2204'/(385)	1860'/(281)	1513'/(175)



OCA(H)		A	B	C	D						
Straight-in Approach	CAT I	1081' (140') (43)	1091' (150') (46)	1103' (162') (50)	1118' (177') (54)						
		990' (49') (15)	1001' (60') (19)	1014' (73') (23)	1027' (86') (27)						
	LOC	With SDF	1400' (460') (145)	1400' (460') (145)	1400' (460') (145)	1400' (460') (145)					
		WO SDF	1560' (620') (190)	1560' (620') (190)	1560' (620') (190)	1560' (620') (190)					
Circling		1760' (820') (250)	1810' (870') (270)	2130' (1190') (365)	2190' (1250') (385)						
GROUND SPEED		km/h	150	180	210	240	270	300	330	360	390
		kt	81	97	113	130	146	162	178	194	211
RATE OF DESCENT		m/s	2.2	2.6	3.1	3.5	3.9	4.4	4.8	5.2	5.7
		ft/min	433	512	610	689	768	866	945	1024	1122

WARNING:
1. RWY of KRASNOYARSK/Cheremshanka AD is located at 1800m north-east of the runway.
2. MAPt at MM.
Timing not authorized for defining MAPt.

NOTE
ILS DME IBK reads zero at RWY 29 THR.