

# HI-TACAN RWY 16

TACAN HMN Chan 92	APCH CRS 162°	Rwy ldg 12,134 TDZE 4083 Arprt Elev 4093
----------------------	------------------	--

[USAF]

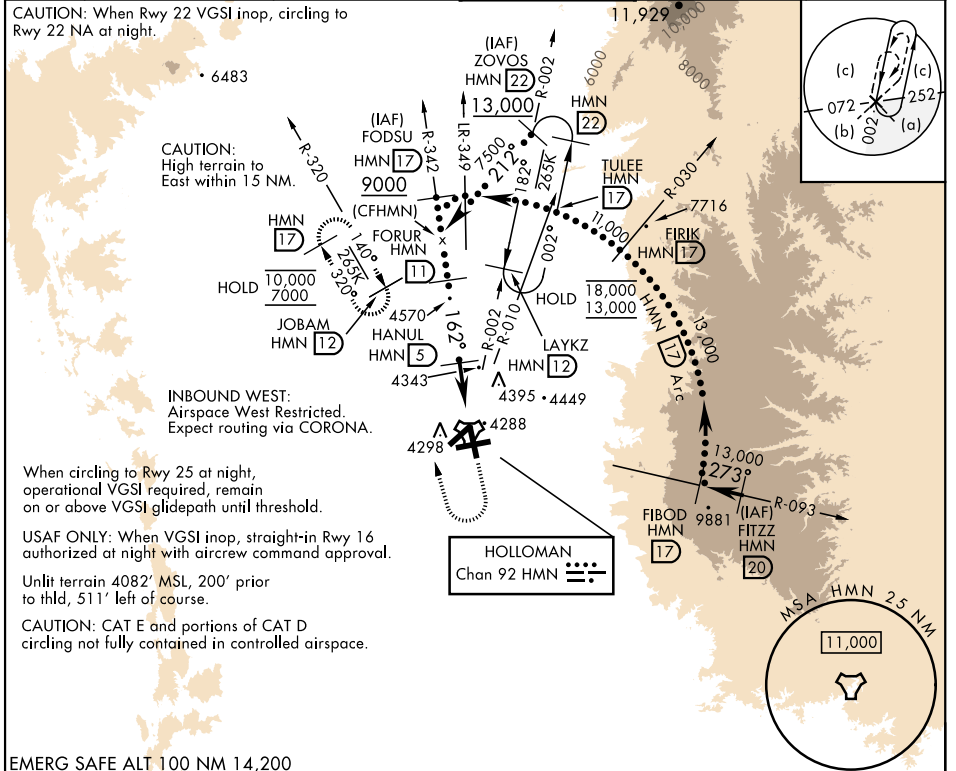
HOLLOMAN AFB (KHMN)

**⚠** \* When ALS inop, increase CAT CDE vis to 1½ miles.  
When VGSi inop, procedure NA at night.

ALSF-1

MISSED APPROACH: Climb straight ahead to 7000, passing 5000 turn right and intercept HMN R-320 outbound to JOBAM and hold.

ATIS * 273.5	ALBUQUERQUE CENTER 132.65 257.6	APP CON 120.6 269.225	TOWER * 119.3 254.4	GND CON 127.05 275.8	CLNC DEL 126.7 289.4
-----------------	------------------------------------	--------------------------	------------------------	-------------------------	-------------------------



EMERG SAFE ALT 100 NM 14,200

	ELEV 4093	TDZE 4083	
CATEGORY	C	D	E
S-16 *	4620-1	537 (600-1)	
CIRCLING	4680-1½ 587 (600-1½)	4740-2 647 (700-2)	4780-2½ 687 (700-2½)

HIRL all rwys  
REIL Rwy 22

# HI-TACAN RWY 16

SW-1, 20 MAR 2025 to 17 APR 2025

SW-1, 20 MAR 2025 to 17 APR 2025