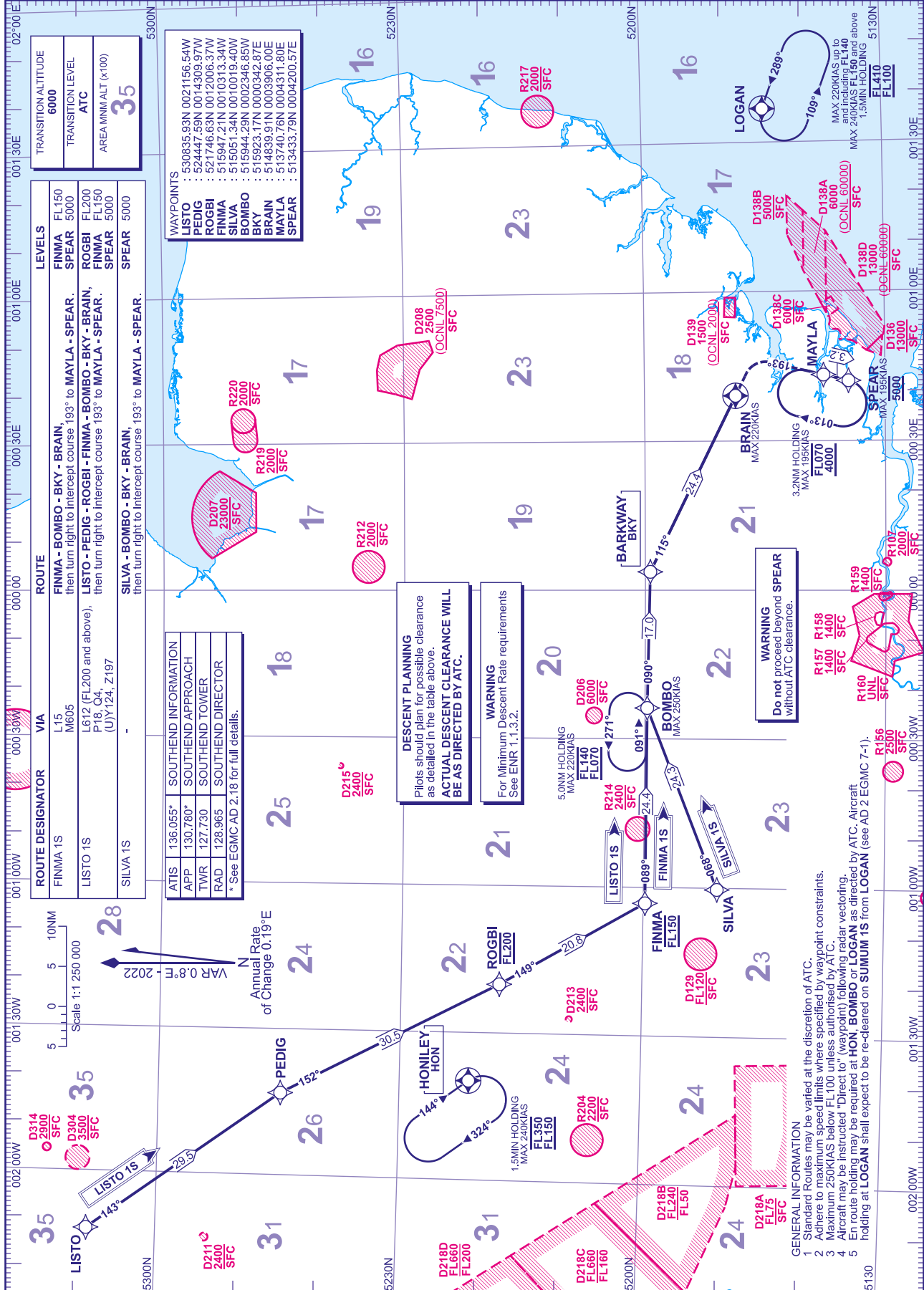


**RNAV5 (DME/DME OR GNSS)
STANDARD ARRIVAL CHART -
INSTRUMENT (STAR) - ICAO**

DISTANCES IN NAUTICAL MILES
TRACKS ARE MAGNETIC
ALTITUDES AND ELEVATIONS ARE IN FEET

RHWY 05/23

FINMA 1S LISTO 1S SILVA 1S



TRANSITION ALTITUDE	6000
TRANSITION LEVEL	ATC
AREA MIM ALT (x100)	35

LEVELS	FINMA FL150 SPEAR 5000
ROUTE	FINMA - BOMBO - BKY - BRAIN then turn right to intercept course 193° to MAYLA - SPEAR.
VIA	L15 M605
ROUTE DESIGNATOR	FINMA 1S
LISTO 1S	L15 M605 then turn right to intercept course 193° to MAYLA - BRAIN. LISTO (FL200 and above), P18, O4, (UJY124, Z197
SILVA 1S	SILVA - BOMBO - BKY - BRAIN, then turn right to intercept course 193° to MAYLA - SPEAR.

WAYPOINTS

LISTO	: 530835.93N 0021166.54W
PEDIG	: 524447.59N 0014309.97W
ROGBI	: 521746.63N 0012006.37W
FINMA	: 516947.21N 0010393.34W
SILVA	: 515051.34N 0010019.40W
BOMBO	: 515944.29N 0002346.85W
BKYN	: 515933.71N 0006342.87E
BRAIN	: 514639.91N 0003906.00E
MAYLA	: 513740.76N 0004311.80E
SPEAR	: 513433.79N 0004200.57E

ATIS	136.055	SOUTHWIND INFORMATION
APP	130.780	SOUTHWIND APPROACH
TWR	127.730	SOUTHWIND TOWER
RAD	128.965	SOUTHWIND DIRECTOR
* See EGMC AD 2.18 for full details.		

DESCENT PLANNING
Pilots should plan for possible clearance as detailed in the table above.
ACTUAL DESCENT CLEARANCE WILL BE AS DIRECTED BY ATC.

WARNING
For Minimum Descent Rate requirements See ENR 1.1.3.2.

WARNING
Do not proceed beyond SPEAR without ATC clearance.

- GENERAL INFORMATION**
- Standard Routes may be varied at the discretion of ATC.
 - Adhere to maximum speed limits where specified by waypoint constraints.
 - Maximum 250KIAS below FL100 unless authorised by ATC.
 - Aircraft may be instructed "Direct to" (waypoint) following radar vectoring.
 - En route holding may be required at HON, BOMBO or LOGAN as directed by ATC. Aircraft holding at LOGAN shall expect to be re-cleared to SUMUM 1S from LOGAN (see AD 2 EGMC 7-1).