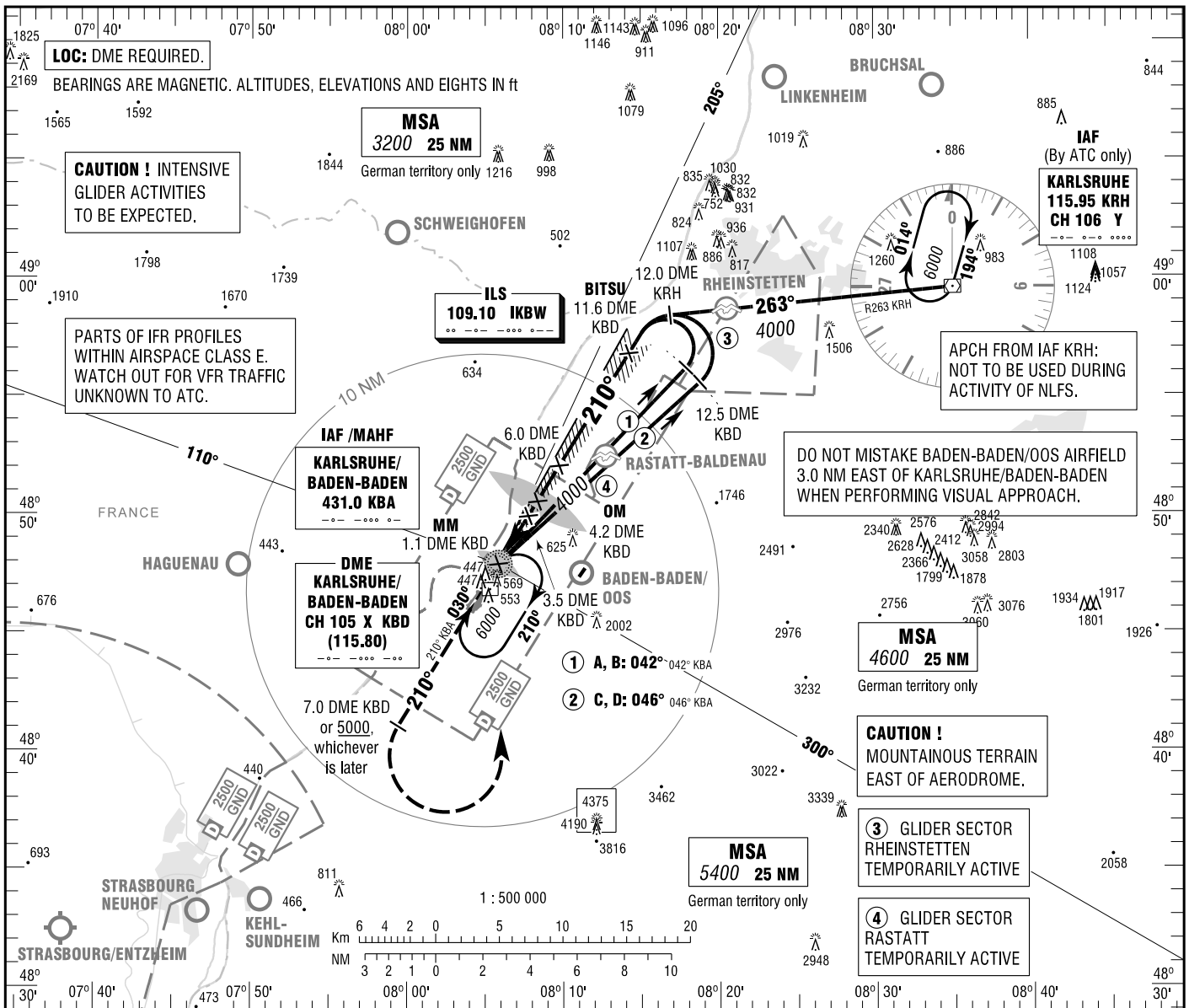


INSTRUMENT
APPROACH
CHART - ICAO

VAR 2° E
ELEV 409
OCH RELATED TO
THR 21 ELEV 405

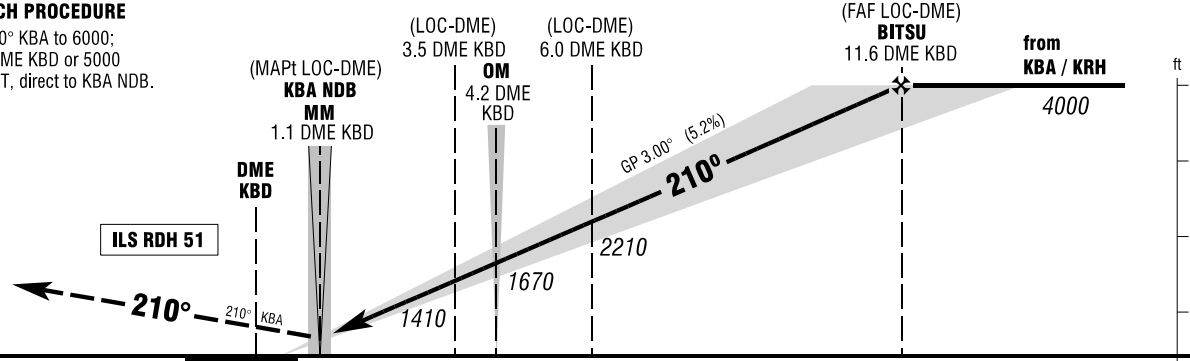
BADEN ATIS 121.280
STRASBOURG APPROACH 119.580
BADEN TOWER 134.105
BADEN GROUND 121.830

KARLSRUHE/BADEN-BADEN
ILS CAT II & III or LOC
RWY 21



MISSED APPROACH PROCEDURE

Climb on course 210° KBA to 6000;
when passing 7.0 DME KBD or 5000
whichever is later; LT, direct to KBA NDB.



NM	6	5	4	3	2	1	0	1	2	3	4	5	6	7	8	9	10	11	12	13	14	15	
OCA (OCH)																							
ILS CAT I																							
ILS CAT II																							
LOC-DME																							

DME KBD	2	3	4	5	6	7	8	9	10	11
DIST THR	1.5	2.5	3.5	4.5	5.5	6.5	7.5	8.5	9.5	10.5
ALTITUDE	940	1260	1570	1890	2210	2530	2850	3170	3490	3800

LOC-DME: Timing not authorized for defining the MAPt.

GS	kt	80	100	120	140	160	180
OM-THR (3.8 NM)	MIN:SEC	2:51	2:17	1:54	1:38	1:26	1:16
Rate of descent (5.2%)	ft / MIN	420	530	640	740	850	960

CAT III APPROVED (MNM RVR 75M).

Correction: IKBW frequency and obstacles revised.