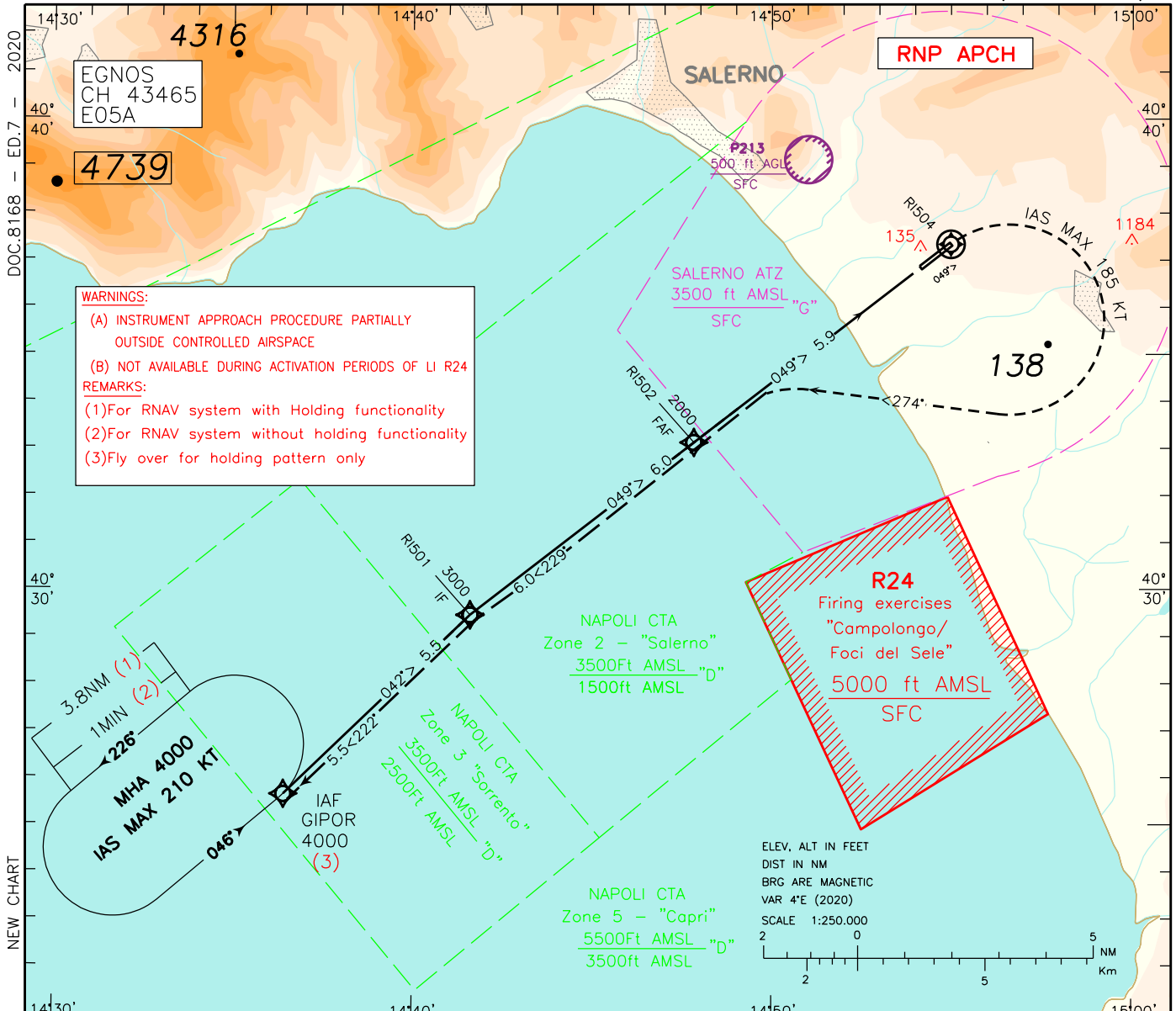


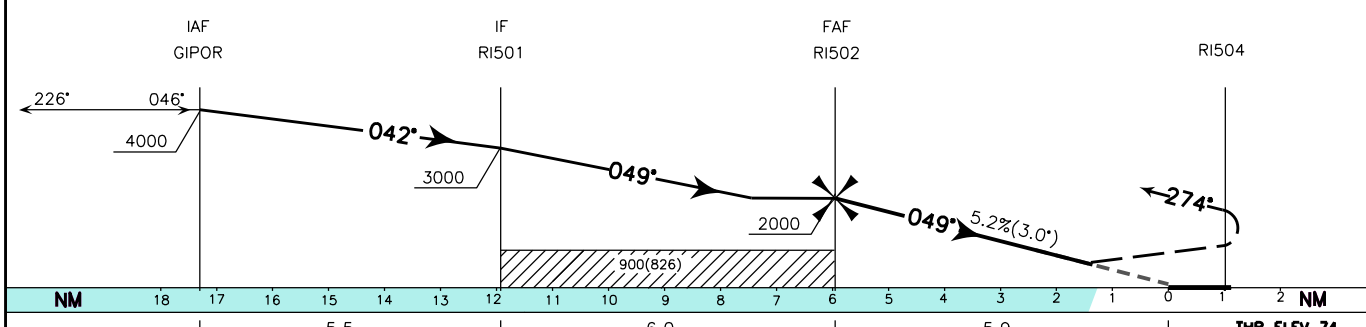
INSTRUMENT APPROACH CHART - ICAO

AD ELEV 123
 APP Roma Radar 124.350 (134.200)
 AFIS Salerno Aerodrome INFO 119.175

SALERNO/Pontecagnano (LIRI)
RNP Z RWY05 (LPV ONLY)



TRANSITION ALT 8000
 RDH 15.0 M
 MISSED APPROACH: Climb to 4000ft, continue on track 049° to RI504, then turn right (IAS MAX 185 KT) on track 274° to join and follow track 229° to RI502. Continue to GIPOR via RI501.



OCA (OCH)		A	B	C	D	CIRCLING NOT ALLOWED	GS	FT PER MIN	DIST THR05	ALT (HGT)	MNM SECT ALT	
STRAIGHT IN APPROACH	LPV	923 (849)	935 (861)	943 (869)	954 (880)						25 NM	ARP
							80	425	5	1717 (1643)		
							100	530	4	1399 (1325)		
							120	635	3	1080 (1006)		
							140	745				
	CIRCLING	930(807)	940(817)	2030(1907)	2140(2017)		160	850				