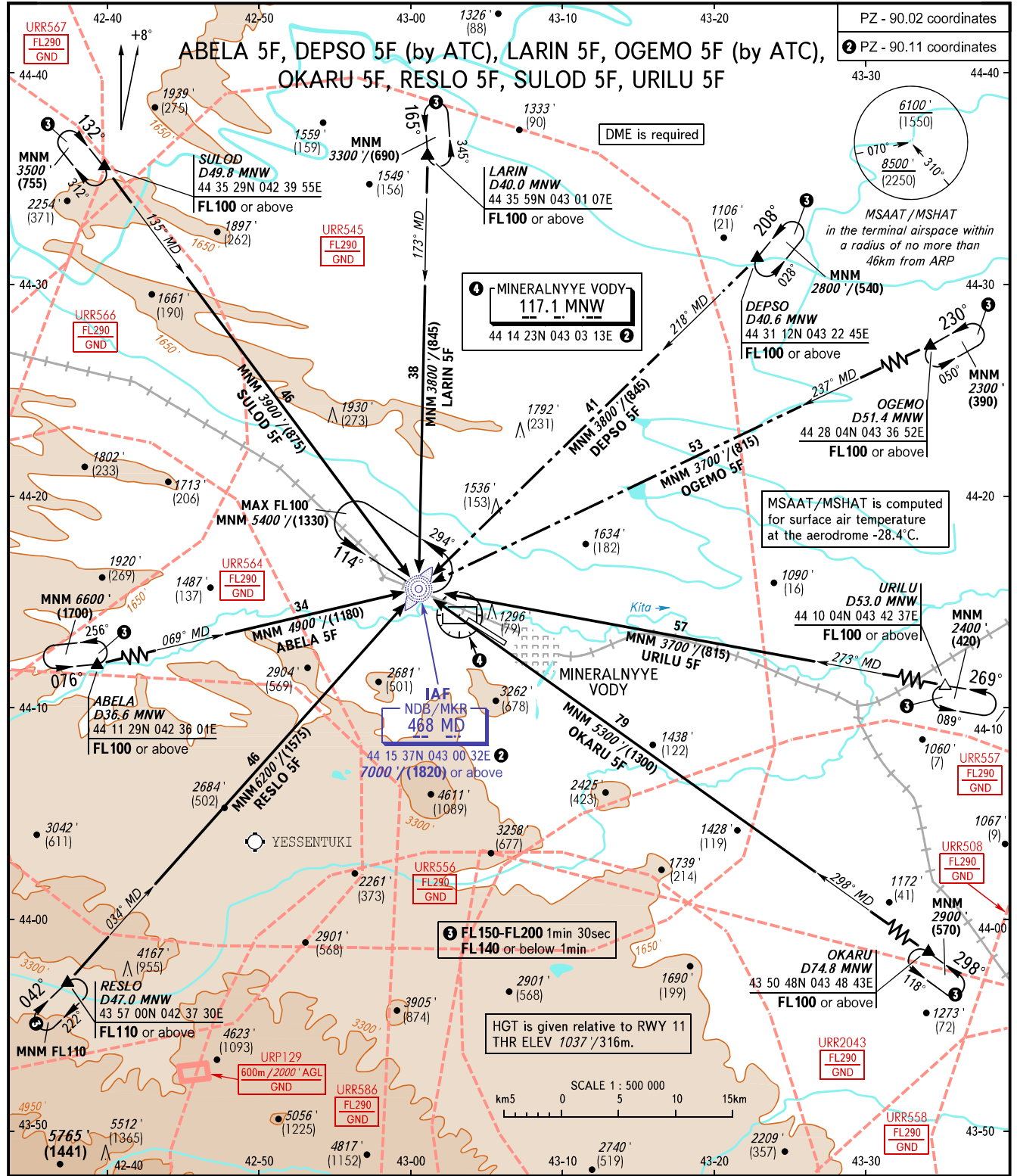


STANDARD ARRIVAL CHART  
INSTRUMENT (STAR) - ICAO

MINERALNYYE VODY, RUSSIA  
MINERALNYYE VODY  
RWY 11/29

TRANSITION  
LEVEL: 1



APPROACH	119.300
RADAR	120.700
START	128.000
<b>BEARINGS AND TRACKS ARE MAGNETIC ELEVATIONS IN FEET and METRES ALTITUDES IN FEET HEIGHTS IN METRES DISTANCES IN KILOMETRES</b>	
Alt set: -QNH(QFE on req); -hPa(mm on req).	

**NOTE:**  
ABELA 5F is not AVBL, when URR545, URR564, URR566, URR586, URR557 are active.  
DEPESO 5F, LARIN 5F, OGEMO 5F are not AVBL, when URR545 is active.  
OKARU 5F is not AVBL, when URR545, URR556, URR557, URR2043, URR558, URR508 are active.  
RESLO 5F is not AVBL, when URR545, URR564, URR562, URR586, URR556 are active.  
SULOD 5F is not AVBL, when URR545, URR566, URR567 are active.  
URILU 5F is not AVBL, when URR545, URR557 are active.

**1 TRANSITION LEVEL:**  
- FL100 when QNH is 1013 hPa (760mm mercury column) or above;  
- FL110 when QNH is 977 hPa (733mm mercury column) or above, but less than 1013 hPa (760mm mercury column);  
- FL120 when QNH is less than 977 hPa (733mm mercury column).