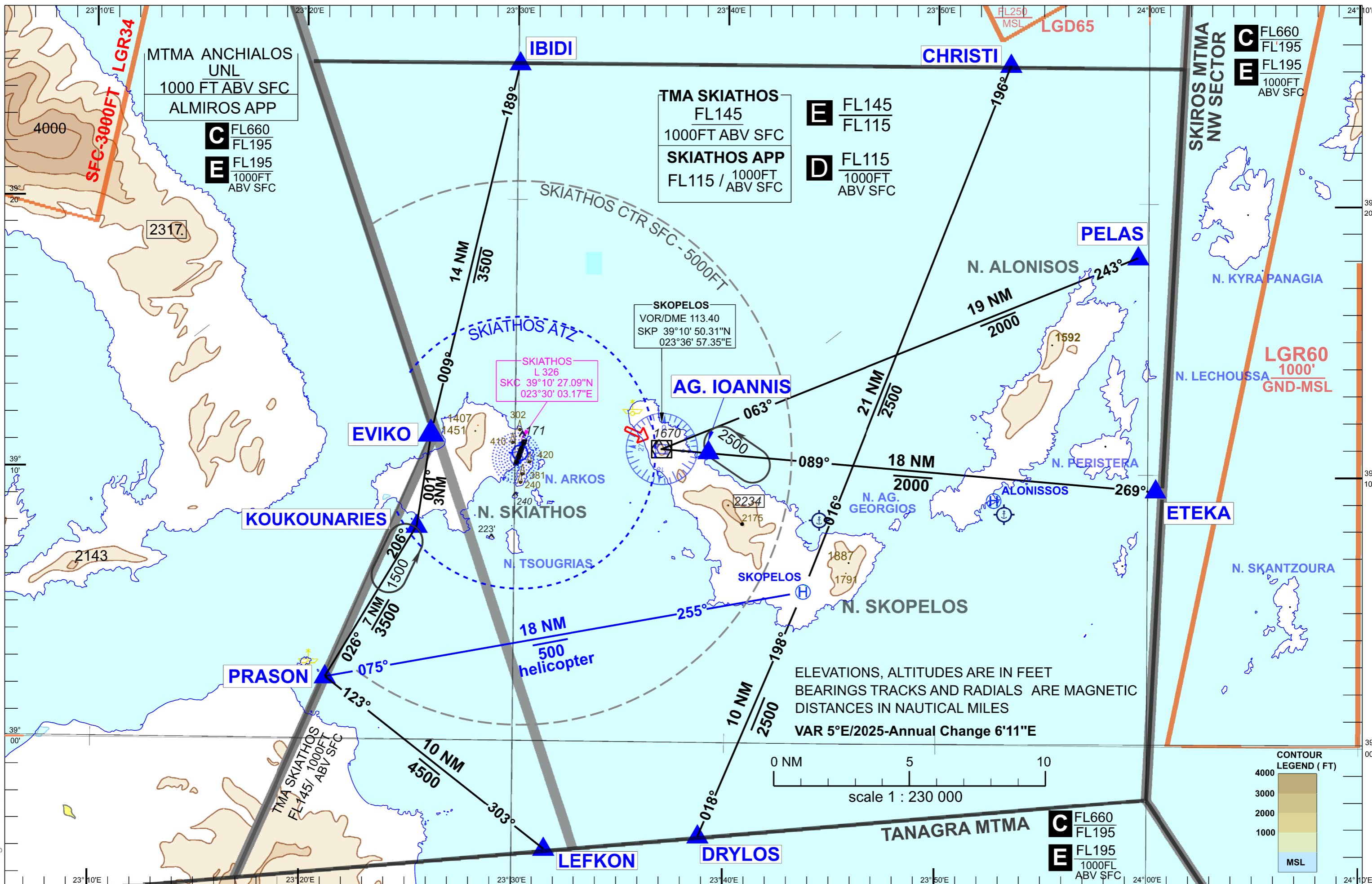


TRANSITION ALTITUDE 4000ft  
AERODROME ELEVATION 54 FT

SKIATHOS TWR 123.250  
SKIATHOS APP 126.050

SKIATHOS / ALEXANDROS PAPANIAMANTIS  
VFR routes SKIATHOS TMA



Change: route SKOPELOS - ALONISSOS deleted

**SKIATHOS / ALEXANDROS PAPADIAMANTIS TMA - VFR ROUTES**

1. Access to Skiathos TMA is restricted only to aircraft capable of maintaining two-way radio communication with the appropriate ATS unit.
2. Aircraft (including Helicopters) flying VFR within Skiathos TMA, should follow the VFR Routes and Altitudes as depicted in this chart unless VFR criteria require otherwise or a special authorisation is obtained from the appropriate ATC unit.
3. When necessary to deviate from the specified VFR Routes or Altitudes a clearance should be obtained from Skiathos Approach (freq. 126.050 MHz) before entering Skiathos TMA or immediately after departure. To meet special traffic requirements, the appropriate ATS unit may assign different VFR routes and altitudes.
4. A continuous watch must be maintained on the appropriate frequency with Skiathos Approach (freq. 126.050 MHz) or Skiathos Tower (freq. 123.250 MHz) when flying the VFR Routes and Altitudes depicted on this chart.
5. To meet special traffic requirements the appropriate ATS unit may assign different VFR routes.
6. Cancellation of IFR flight plan within Skiathos TMA is subject to ATC approval and after such a cancellation the VFR routes and altitudes should again be followed.
7. It is reminded that on VFR routes the responsibility to maintain terrain and obstacle clearance and to avoid collision with other aircraft and restricted airspace rests with the pilot
8. All aircraft entering Skiathos TMA should establish contact with Skiathos Approach (freq. 126.050 MHz), report over all compulsory reporting points flying the VFR Routes depicted in this chart.
9. Aircraft flying VFR within Skiathos TMA shall be equipped by a functioning transponder with mode A and C capabilities.
10. Unless otherwise instructed by the appropriate ATS unit, the VFR aircraft shall squawk A 7000.
11. Access to Skiathos CTR is restricted to aircraft capable of maintaining two-way radio communication with Skiathos Tower (freq. 123.250 MHz).
12. To assist Skiathos Airport to arrange a landing sequence of VFR arriving aircraft and facilitate the aerodrome traffic, two visual holding patterns are established southwest and east of Skiathos Airport. Holding on the above patterns should be carried out as described on this VFR Routes and Altitudes Chart.

**COORDINATES (WGS-84) OF  
REPORTING POINTS OF VFR ROUTES****CHRISTI** : 39°25'05"N 023°53'25"E**DRYLOS**: 38°56'33"N 023°38'49"E**ETEKA**: 39°09'23"N 024°00'30"E**EVIKO**: 39°11'21"N 023°25'51"E**IBIDI**: 39°25'01"N 023°30'07"E**KOUKOUNARIES**: 39°07'54"N 023°25'23"E**LEFKON**: 38°56'03"N 023°31'32"E**PELAS**: 39°18'00"N 023°59'30"E**PRASON**: 39°02'19"N 023°21'07"E**AG. IOANNIS**: 39°10'43"N 023°39'05"E