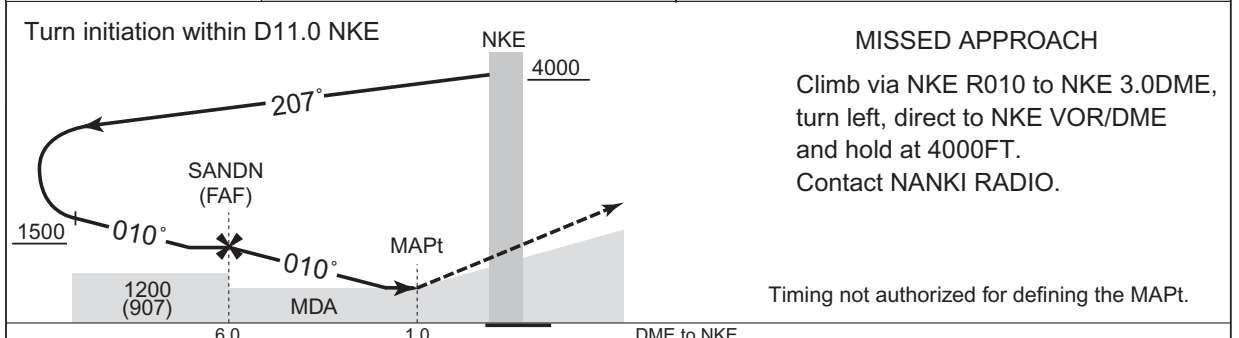
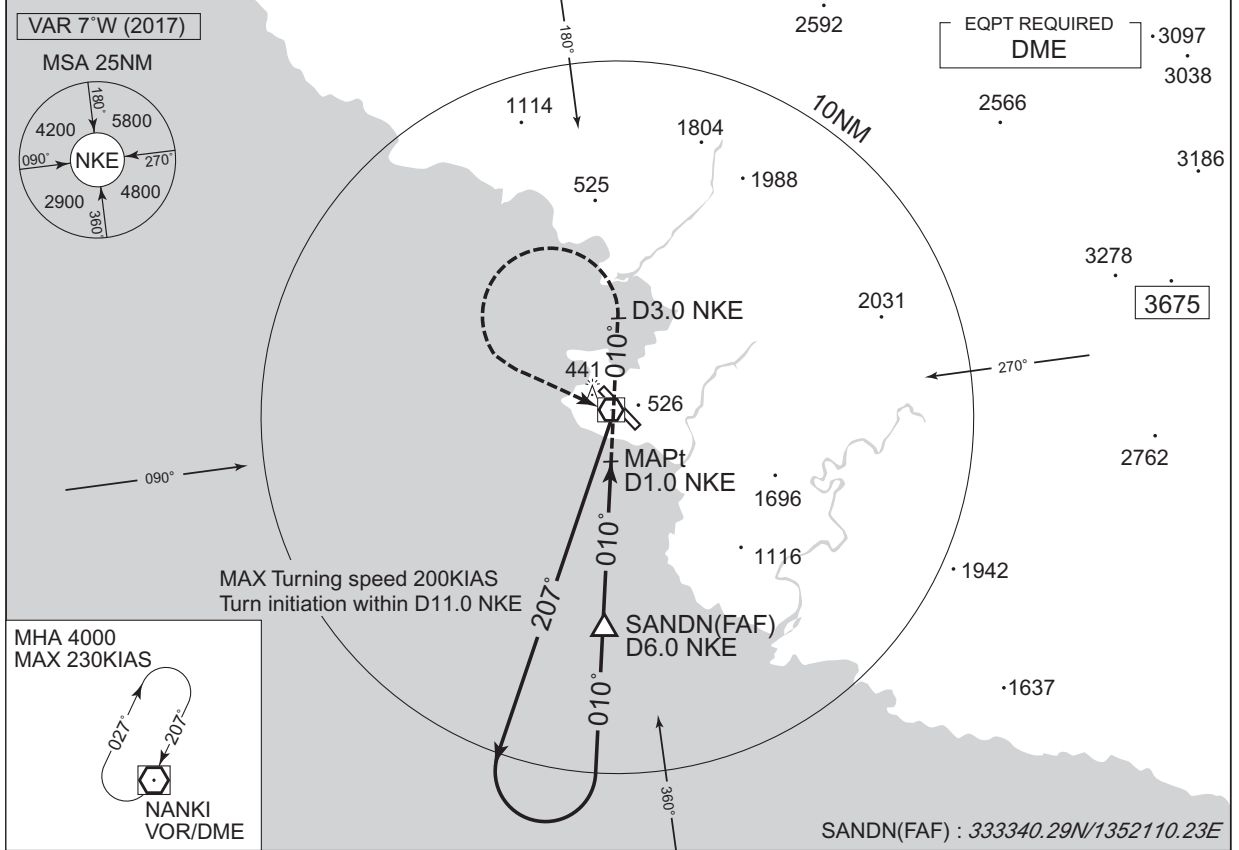


INSTRUMENT APPROACH CHART

RJBD / NANKI-SHIRAHAMA VOR A

TOKYO CONTROL 133.5 – 127.3 227.6 – 255.3	NANKI VOR/DME 109.05 NKE CH-27Y $\equiv\text{---}$ 33°39'41"N/135°21'34"E	NANKI RADIO 118.55 – 126.2	NO RADAR
---	--	-------------------------------	----------



CHANGE : FREQ for TOKYO CONTROL.

MINIMA		AD elev. 293
CAT	CIRCLING	
	MDA(H)	VIS
A	790 (497)	1600
B		2400
C		3200
D	1150 (857)	3200
Circling to WEST side of RWY only.		