


LOC/DME I-RRU 111.3 Chan 50	APP CRS 269°	Rwy Idg TDZE 8175 862 Apt Elev 869
--	------------------------	--

ILS or LOC RWY 27

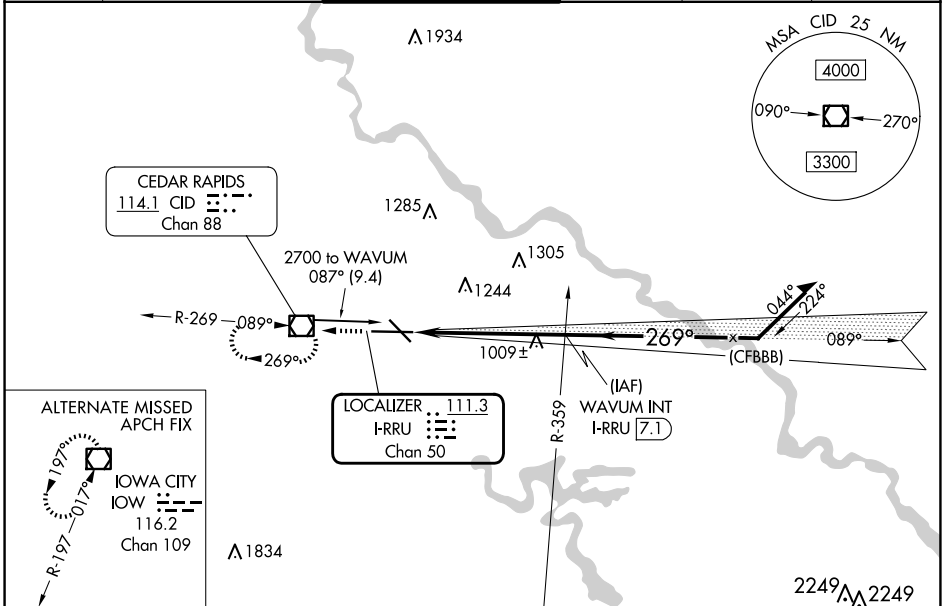
THE EASTERN IOWA (CID)

⚠ VDP NA with Iowa City altimeter setting. Autopilot coupled approach NA below 1910.
⚠ When local altimeter setting not received, use Iowa City altimeter setting: increase DA to 1126 feet; increase all MDA 80 feet, increase S-LOC Cat C and D visibility to RVR 5000, and Circling Cat C and D visibility ¼ SM.
 #RVR 1800 authorized with use of FD or HUD to DA (NA when using Iowa City altimeter setting).

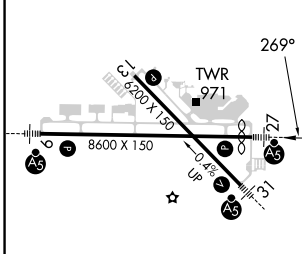
MALSR


MISSED APPROACH: Climb to 2900 direct CID VOR/DME and hold, continue climb-in-hold to 2900.

ATIS 124.15	CEDAR RAPIDS APP CON* 119.7 266.8	CEDAR RAPIDS TOWER* 118.7 (CTAF) 266.8	GND CON 121.6	CLNC DEL 125.45	UNICOM 122.95
-----------------------	---	--	-------------------------	---------------------------	-------------------------



ELEV 869	D	TDZE 862
----------	----------	----------



CATEGORY	A	B	C	D
S-ILS 27 #	1062/24 200 (200-½)			
S-LOC 27	1260/24 398 (400-½)	1260/35 398 (400-¾)		
CIRCLING	1280-1 411 (500-1)	1320-1 451 (500-1)	1560-2 691 (700-2)	1560-2¼ 691 (700-2¼)

CEDAR RAPIDS, IOWA
 Amdt 6H 04NOV21

41°53'N-91°43'W

THE EASTERN IOWA (CID)

ILS or LOC RWY 27

NC-3, 20 MAR 2025 to 17 APR 2025

NC-3, 20 MAR 2025 to 17 APR 2025