

INSTRUMENT APPROACH CHART - ICAO

DONCASTER SHEFFIELD

RNP

RWY 20

(ACFT CAT A,B,C,D)

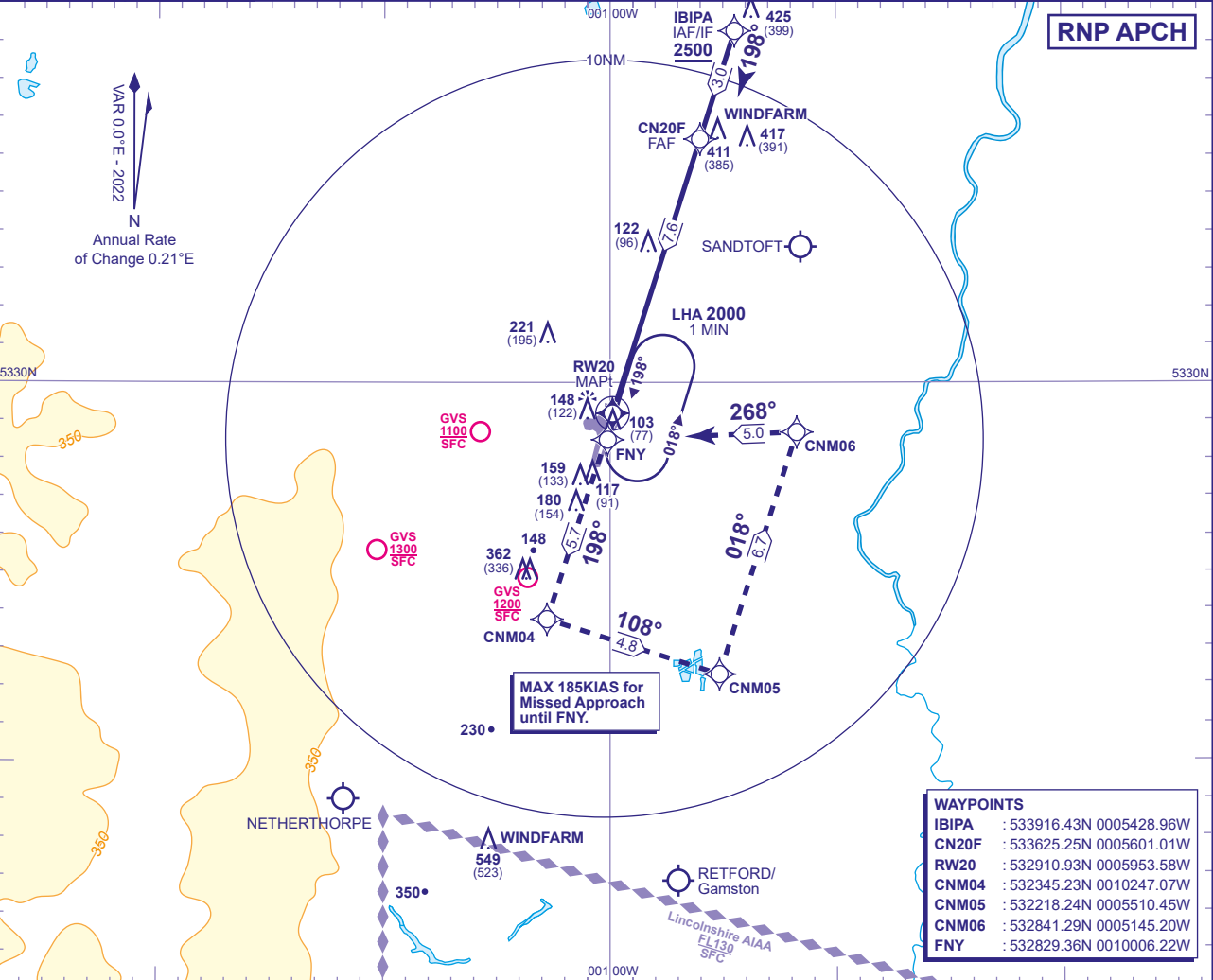


APP	126.225	DONCASTER APPROACH	AD ELEVATION	55
TWR	128.775	DONCASTER TOWER	THR ELEVATION	26
RAD	126.225, 129.055	DONCASTER RADAR	OBSTACLE ELEVATION	549 AMSL (523) (ABOVE THR)
ATIS	134.955	DONCASTER INFORMATION		

MIN TEMP -10°C
TRANSITION ALTITUDE 5000

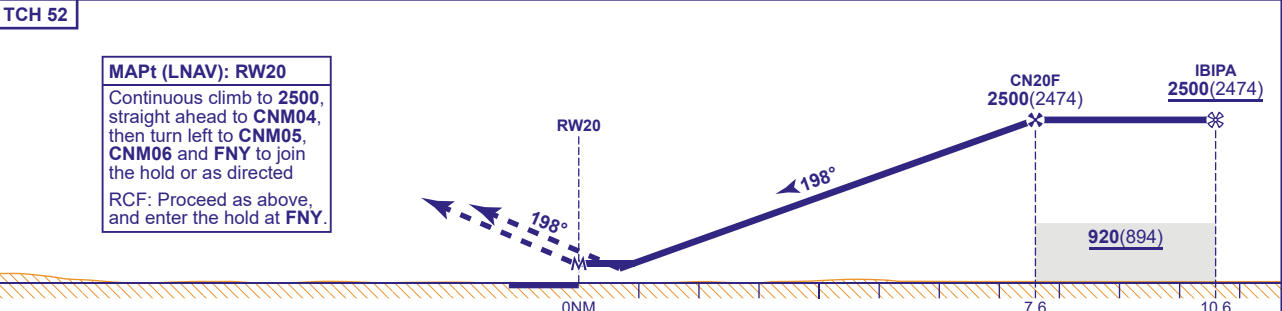
BEARINGS ARE MAGNETIC

RNP APCH



RECOMMENDED PROFILE VNAV - VERTICAL PATH ANGLE 3.0° (LNAV 5.24%), 318FT /NM

NM to RW20	7	6	5	4	3	2	1
ALT(HGT)	2310(2284)	1990(1964)	1670(1644)	1350(1324)	1030(1004)	710(684)	400(374)



Aircraft Category		A	B	C	D	Rate of descent	G/S KT	160	140	120	100	80
		LNAV/VNAV	280(254)	290(264)	300(274)		310(284)	FT/MIN	850	740	640	530
OCA (OCH)	LNAV	390(364)	390(364)	390(364)	390(364)							
	Total Area	480(425)	550(495)	760(705)	760(705)							

NOTE Aircraft will be radar vectored to IBIPA.

CHANGE (12/21): EGNOS AND LPV REMOVED.