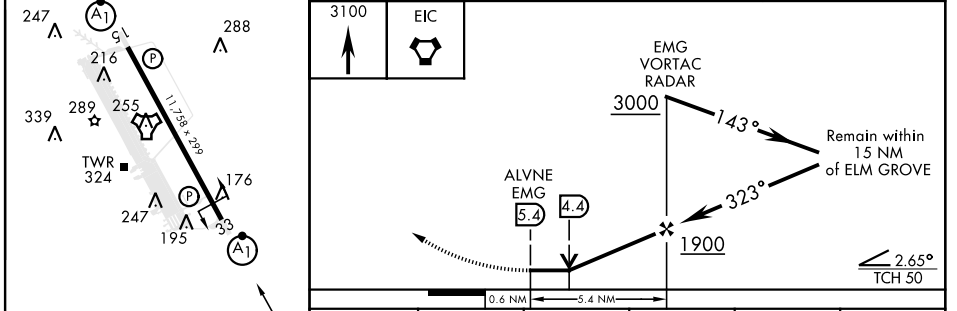
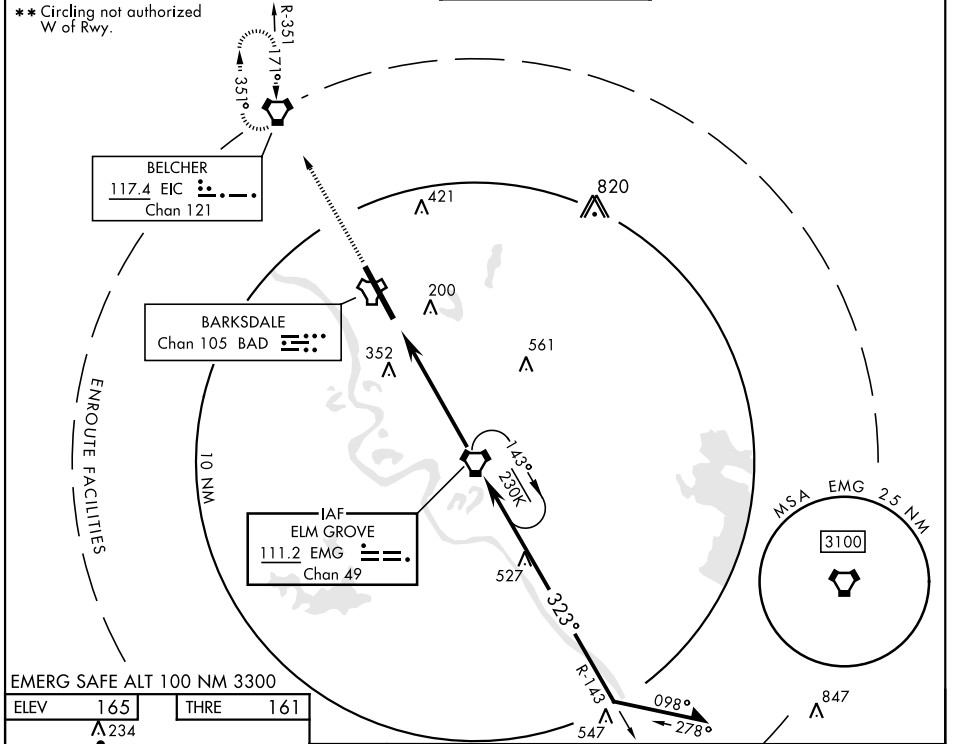


VOR/DME Y RWY 33

VORTAC EMG 111.2 Chan 49	APCH CRS 323°	Rwy Idg 11,758 THRE 161 Arprt Elev 165	[USAF]	BARKSDALE AFB (KBAD)
---------------------------------------	-------------------------	---	--------	----------------------

DME or RADAR required.	ALSF-1 	MISSED APPROACH: Climb to 3100 direct EIC VORTAC and hold.
------------------------	------------	--

ATIS 307.025	SHREVEPORT APP CON 123.75 360.725 (320°-152°) 119.9 335.55 (153°-319°)	TOWER ★ 128.25 278.3	GND CON 121.8 253.5	ASR
------------------------	--	--------------------------------	-------------------------------	-----



ELEV 165	THRE 161					
HIRL Rwy 15-33		3100	EIC			
FAF to MAP 5.4 NM		EMG VORTAC RADAR		3000		
		ALVNE EMG		1900		
		TWR 324		3000		
		EMG		143°		
		EMG		323°		
		EMG		Remain within 15 NM of ELM GROVE		
		EMG		2.65° TCH 50		
		EMG		0.6 NM		
		EMG		5.4 NM		
		EMG		323°		
		EMG		3000		
		EMG		143°		
		EMG		323°		
		EMG		Remain within 15 NM of ELM GROVE		
		EMG		2.65° TCH 50		
		EMG		0.6 NM		
		EMG		5.4 NM		
		EMG		323°		
		EMG		3000		
		EMG		143°		
		EMG		323°		
		EMG		Remain within 15 NM of ELM GROVE		
		EMG		2.65° TCH 50		
		EMG		0.6 NM		
		EMG		5.4 NM		
		EMG		323°		
		EMG		3000		
		EMG		143°		
		EMG		323°		
		EMG		Remain within 15 NM of ELM GROVE		
		EMG		2.65° TCH 50		
		EMG		0.6 NM		
		EMG		5.4 NM		
		EMG		323°		
		EMG		3000		
		EMG		143°		
		EMG		323°		
		EMG		Remain within 15 NM of ELM GROVE		
		EMG		2.65° TCH 50		
		EMG		0.6 NM		
		EMG		5.4 NM		
		EMG		323°		
		EMG		3000		
		EMG		143°		
		EMG		323°		
		EMG		Remain within 15 NM of ELM GROVE		
		EMG		2.65° TCH 50		
		EMG		0.6 NM		
		EMG		5.4 NM		
		EMG		323°		
		EMG		3000		
		EMG		143°		
		EMG		323°		
		EMG		Remain within 15 NM of ELM GROVE		
		EMG		2.65° TCH 50		
		EMG		0.6 NM		
		EMG		5.4 NM		
		EMG		323°		
		EMG		3000		
		EMG		143°		
		EMG		323°		
		EMG		Remain within 15 NM of ELM GROVE		
		EMG		2.65° TCH 50		
		EMG		0.6 NM		
		EMG		5.4 NM		
		EMG		323°		
		EMG		3000		
		EMG		143°		
		EMG		323°		
		EMG		Remain within 15 NM of ELM GROVE		
		EMG		2.65° TCH 50		
		EMG		0.6 NM		
		EMG		5.4 NM		
		EMG		323°		
		EMG		3000		
		EMG		143°		
		EMG		323°		
		EMG		Remain within 15 NM of ELM GROVE		
		EMG		2.65° TCH 50		
		EMG		0.6 NM		
		EMG		5.4 NM		
		EMG		323°		
		EMG		3000		
		EMG		143°		
		EMG		323°		
		EMG		Remain within 15 NM of ELM GROVE		
		EMG		2.65° TCH 50		
		EMG		0.6 NM		
		EMG		5.4 NM		
		EMG		323°		
		EMG		3000		
		EMG		143°		
		EMG		323°		
		EMG		Remain within 15 NM of ELM GROVE		
		EMG		2.65° TCH 50		
		EMG		0.6 NM		
		EMG		5.4 NM		
		EMG		323°		
		EMG		3000		
		EMG		143°		
		EMG		323°		
		EMG		Remain within 15 NM of ELM GROVE		
		EMG		2.65° TCH 50		
		EMG		0.6 NM		
		EMG		5.4 NM		
		EMG		323°		
		EMG		3000		
		EMG		143°		
		EMG		323°		
		EMG		Remain within 15 NM of ELM GROVE		
		EMG		2.65° TCH 50		
		EMG		0.6 NM		
		EMG		5.4 NM		
		EMG		323°		
		EMG		3000		
		EMG		143°		
		EMG		323°		
		EMG		Remain within 15 NM of ELM GROVE		
		EMG		2.65° TCH 50		
		EMG		0.6 NM		
		EMG		5.4 NM		
		EMG		323°		
		EMG		3000		
		EMG		143°		
		EMG		323°		
		EMG		Remain within 15 NM of ELM GROVE		
		EMG		2.65° TCH 50		
		EMG		0.6 NM		
		EMG		5.4 NM		
		EMG		323°		
		EMG		3000		
		EMG		143°		
		EMG		323°		
		EMG		Remain within 15 NM of ELM GROVE		
		EMG		2.65° TCH 50		
		EMG		0.6 NM		
		EMG		5.4 NM		
		EMG		323°		
		EMG		3000		
		EMG		143°		
		EMG		323°		
		EMG		Remain within 15 NM of ELM GROVE		
		EMG		2.65° TCH 50		
		EMG		0.6 NM		
		EMG		5.4 NM		
		EMG		323°		
		EMG		3000		
		EMG		143°		
		EMG		323°		
		EMG		Remain within 15 NM of ELM GROVE		
		EMG		2.65° TCH 50		
		EMG		0.6 NM		
		EMG		5.4 NM		
		EMG		323°		
		EMG		3000		
		EMG		143°		
		EMG		323°		
		EMG		Remain within 15 NM of ELM GROVE		
		EMG		2.65° TCH 50		
		EMG		0.6 NM		
		EMG		5.4 NM		
		EMG		323°		
		EMG		3000		
		EMG		143°		
		EMG		323°		
		EMG		Remain within 15 NM of ELM GROVE		
		EMG		2.65° TCH 50		
		EMG		0.6 NM		
		EMG		5.4 NM		
		EMG		323°		
		EMG		3000		
		EMG		143°		
		EMG		323°		
		EMG		Remain within 15 NM of ELM GROVE		
		EMG		2.65° TCH 50		
		EMG		0.6 NM		
		EMG		5.4 NM		
		EMG		323°		
		EMG		3000		
		EMG		143°		
		EMG		323°		
		EMG		Remain within 15 NM of ELM GROVE		
		EMG		2.65° TCH 50		
		EMG		0.6 NM		
		EMG		5.4 NM		
		EMG		323°		
		EMG		3000		
		EMG		143°		
		EMG		323°		
		EMG		Remain within 15 NM of ELM GROVE		
		EMG		2.65° TCH 50		
		EMG		0.6 NM		
		EMG		5.4 NM		
		EMG		323°		
		EMG		3000		
		EMG		143°		
		EMG		323°		
		EMG		Remain within 15 NM of ELM GROVE		
		EMG		2.65° TCH 50		
		EMG		0.6 NM		
		EMG		5.4 NM		
		EMG		323°		
		EMG		3000		
		EMG		143°		
		EMG		323°		
		EMG		Remain within 15 NM of ELM GROVE		
		EMG		2.65° TCH 50		
		EMG		0.6 NM		
		EMG		5.4 NM		
		EMG		323°		
		EMG		3000		
		EMG		143°		
		EMG		323°		
		EMG		Remain within 15 NM of ELM GROVE		
		EMG		2.65° TCH 50		
		EMG		0.6 NM		
		EMG		5.4 NM		
		EMG		323°		
		EMG		3000		
		EMG		143°		
		EMG		323°		
		EMG		Remain within 15 NM of ELM GROVE		
		EMG		2.65° TCH 50		
		EMG		0.6 NM		
		EMG		5.4 NM		
		EMG		323°		
		EMG		3000		
		EMG		143°		
		EMG		323°		
		EMG		Remain within 15 NM of ELM GROVE		
		EMG		2.65° TCH 50		
		EMG		0.6 NM		
		EMG		5.4 NM		
		EMG		323°		
		EMG		3000		
		EMG		143°		
		EMG		323°		
		EMG		Remain within 15 NM of ELM GROVE		
		EMG		2.65° TCH 50		
		EMG		0.6 NM		
		EMG		5.4 NM		
		EMG		323°		
		EMG		3000		
		EMG		143°		
		EMG		323°		
		EMG		Remain within 15 NM of ELM GROVE		
		EMG		2.65° TCH 50		
		EMG		0.6 NM		
		EMG		5.4 NM		
		EMG		323°		
		EMG		3000		
		EMG		143°		
		EMG		323°		
		EMG		Remain within 15 NM of ELM GROVE		
		EMG		2.65° TCH 50		
		EMG		0.6 NM		
		EMG		5.4 NM		
		EMG		323°		
		EMG		3000		
		EMG		143°		
		EMG		323°		
		EMG		Remain within 15 NM of ELM GROVE		
		EMG		2.65° TCH 50		
		EMG		0.6 NM		
		EMG		5.4 NM		
		EMG		323°		
		EMG		3000		
		EMG		143°		
		EMG		323°		
		EMG		Remain within 15 NM of ELM GROVE		
		EMG		2.65° TCH 50		
		EMG		0.6 NM		
		EMG		5.4 NM		
		EMG		323°		
		EMG		3000		