

STANDARD DEPARTURE CHART -INSTRUMENT

RJOM / MATSUYAMA

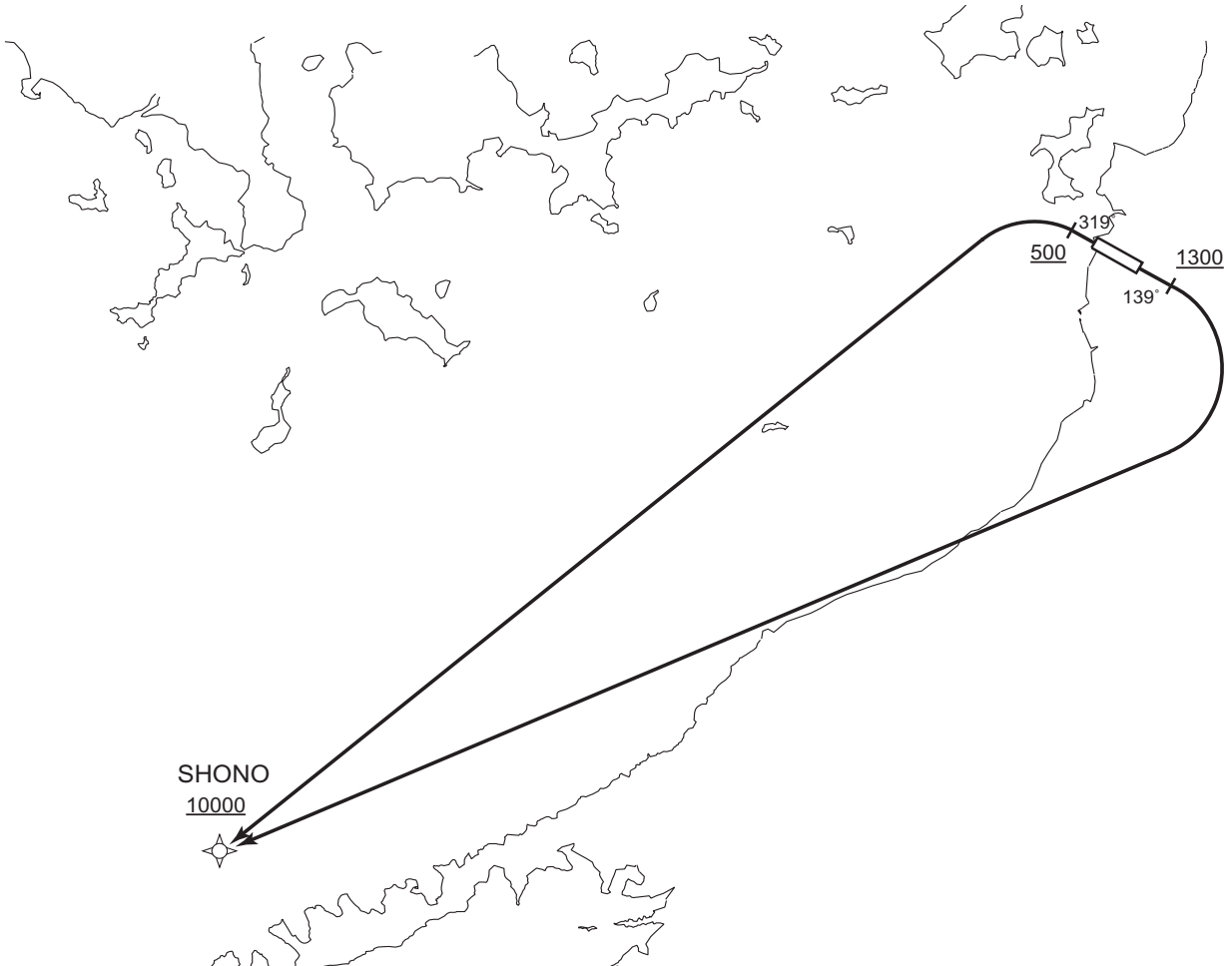
RNAV SID

IYO TWO DEPARTURE

RNP1

Note GNSS required.

VAR 8° W



RWY14 : Climb on HDG139° at or above 1300FT, turn right direct to SHONO at or above 10000FT.

RWY32 : Climb on HDG319° at or above 500FT, turn left direct to SHONO at or above 10000FT.

NOTE RWY14 : 7.0% climb gradient required up to 1800FT.

OBST ALT 1464FT located at 4.3NM 154° FM end of RWY14.

No turn before DER.

CHANGE : PROC renamed. PROC course. VAR.

STANDARD DEPARTURE CHART -INSTRUMENT

RJOM / MATSUYAMA

RNAV SID

IYO TWO DEPARTURE

RWY14

Serial Number	Path Descriptor	Waypoint Identifier	Fly Over	Course °M(°T)	Magnetic Variation	Distance (NM)	Turn Direction	Altitude (FT)	Speed (KIAS)	Vertical Angle	Navigation Specification
001	VA	-	-	139 (130.7)	-8.1	-	-	+1300	-	-	RNP1
002	DF	SHONO	-	-	-8.1	-	R	+10000	-	-	RNP1

RWY32

Serial Number	Path Descriptor	Waypoint Identifier	Fly Over	Course °M(°T)	Magnetic Variation	Distance (NM)	Turn Direction	Altitude (FT)	Speed (KIAS)	Vertical Angle	Navigation Specification
001	VA	-	-	319 (310.7)	-8.1	-	-	+500	-	-	RNP1
002	DF	SHONO	-	-	-8.1	-	L	+10000	-	-	RNP1

Waypoint Coordinates

Waypoint Identifier	Coordinates
SHONO	332744.0N / 1320647.1E

CHANGE : PROC renamed. PROC course. VAR. Waypoint Coordinates added.