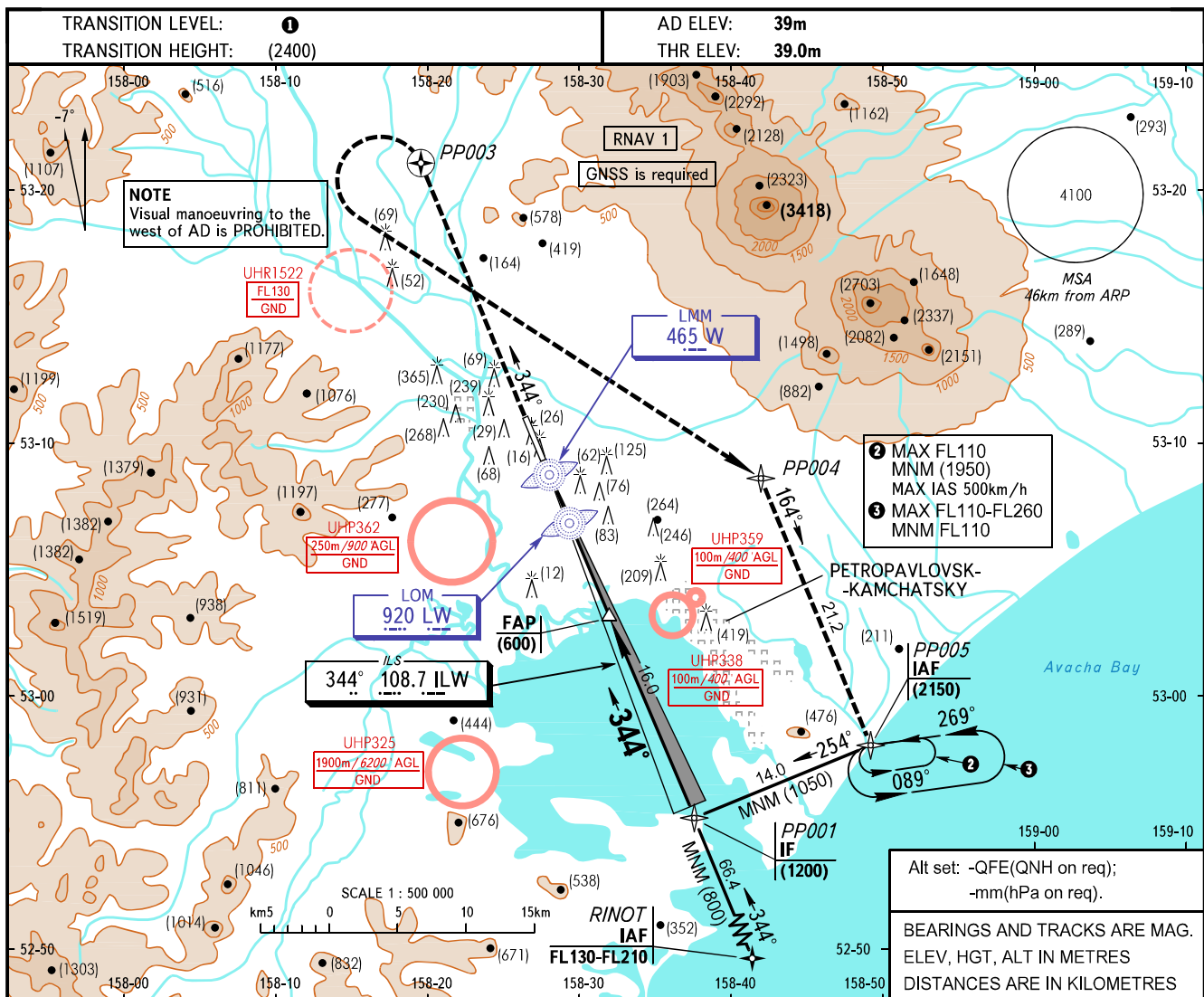


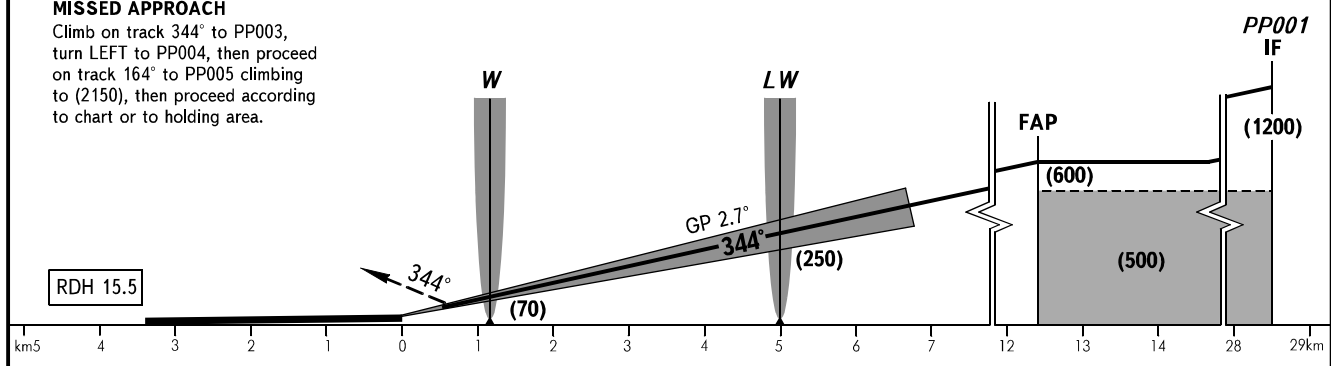
**INSTRUMENT
APPROACH
CHART - ICAO**

START	118.100
RADAR	119.400

PETROPAVLOVSK-KAMCHATSKY, RUSSIA
YELIZOVO
ILS Z CAT I/II RWY 34L



MISSED APPROACH
Climb on track 344° to PP003, turn LEFT to PP004, then proceed on track 164° to PP005 climbing to (2150), then proceed according to chart or to holding area.



OCA(H)		A	B	C	D						
Straight-in Approach	CAT I	MNM climb gradient for missed APCH	2.5%	321(283)	324(286)	327(289)	330(292)				
		4.0%	89(50)	92(53)	95(56)	98(59)					
	CAT II	2.5%	294(256)	299(261)	303(265)	307(269)					
		4.0%	62(23)	67(28)	71(32)	75(36)					
Circling		460(420)	460(420)	520(480)	555(520)						
GROUND SPEED		km/h	150	180	210	240	270	300	330	360	390
RATE OF DESCENT		m/s	2.0	2.4	2.7	3.1	3.5	3.9	4.3	4.7	5.1

1 TRANSITION LEVEL:
- FL090 when QFE is 756mm mercury column or above;
- FL100 when QFE is 729mm mercury column or above, but less than 756mm mercury column;
- FL110 when QFE is less than 729mm mercury column.

WARNING
During missed approach maintain climb gradient of 4.0% up to (1350).