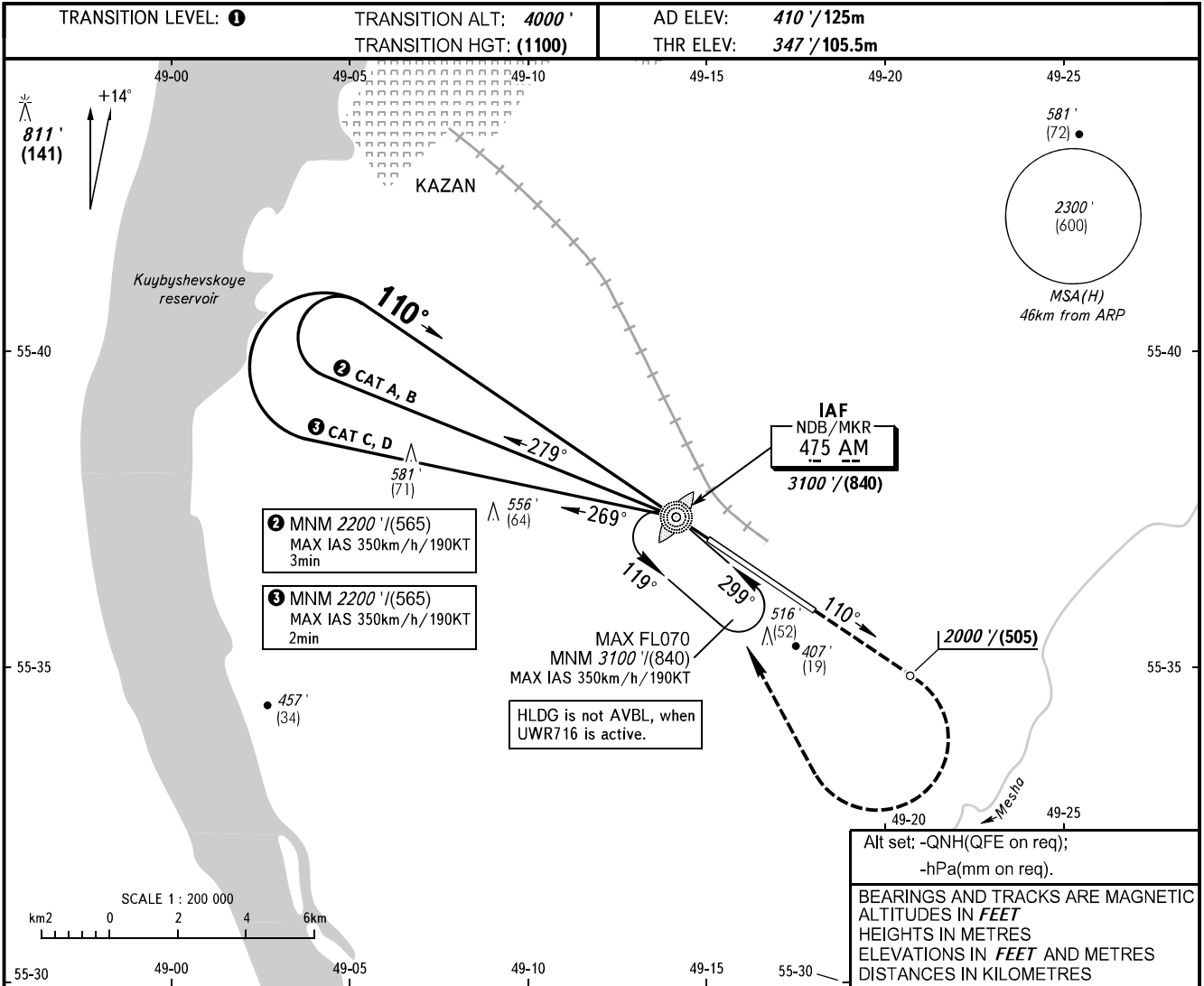


**INSTRUMENT
APPROACH
CHART - ICAO**

| | |
|-------|---------|
| RADAR | 119.400 |
| START | 120.300 |

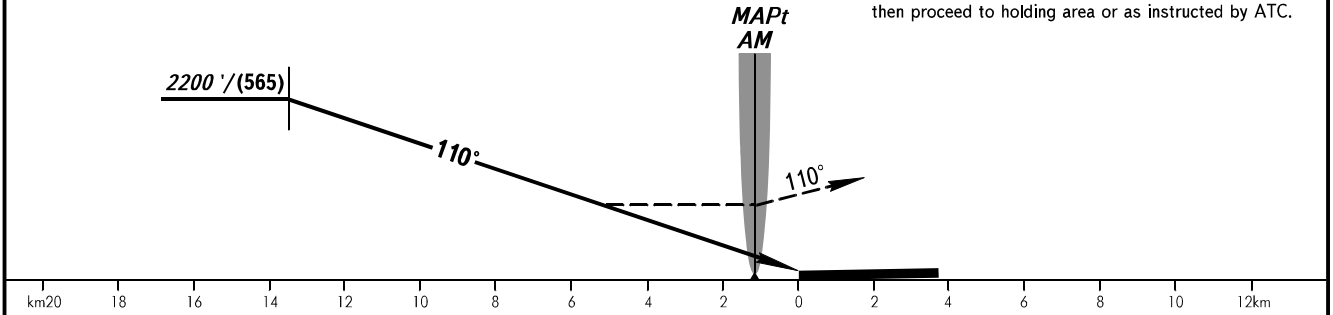
KAZAN, RUSSIA
KAZAN
NDB Y RWY 11



Alt set: -QNH(QFE on req);
-hPa(mm on req).

BEARINGS AND TRACKS ARE MAGNETIC
ALTITUDES IN FEET
HEIGHTS IN METRES
ELEVATIONS IN FEET AND METRES
DISTANCES IN KILOMETRES

MISSED APPROACH
Climb on track 110° to 2000'/(505), turn RIGHT to NDB/MKR AM climbing to 3100'/(840) or above, then proceed to holding area or as instructed by ATC.

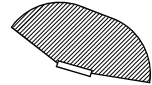


| OCA(H) | | A | B | C | D |
|-------------|----------|-----------------------|-----------------------|-----------------------|-----------------------|
| Straight-in | Approach | 1100' (760') (235) | 1100' (760') (235) | 1100' (760') (235) | 1100' (760') (235) |
| | Circling | 1100' (760') (235) | 1100' (760') (235) | 1100' (760') (235) | 1100' (760') (235) |

TRANSITION LEVEL:
- FL050 when QNH is 1013 hPa (760mm mercury column) or above;
- FL060 when QNH is 977 hPa (733mm mercury column) or above, but less than 1013 hPa (760mm mercury column);
- FL070 when QNH is less than 977 hPa (733mm mercury column).

WARNING:
1. MAPt at NDB/MKR AM. Timing not authorized for defining MAPt.
2. Turn before MAPt is PROHIBITED.

NOTE
Visual manoeuvring to the north of the AD is PROHIBITED.



CHANGE: Circling