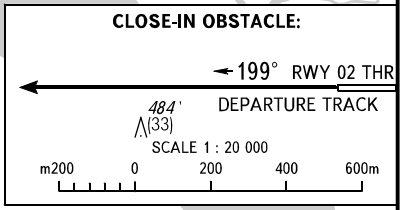
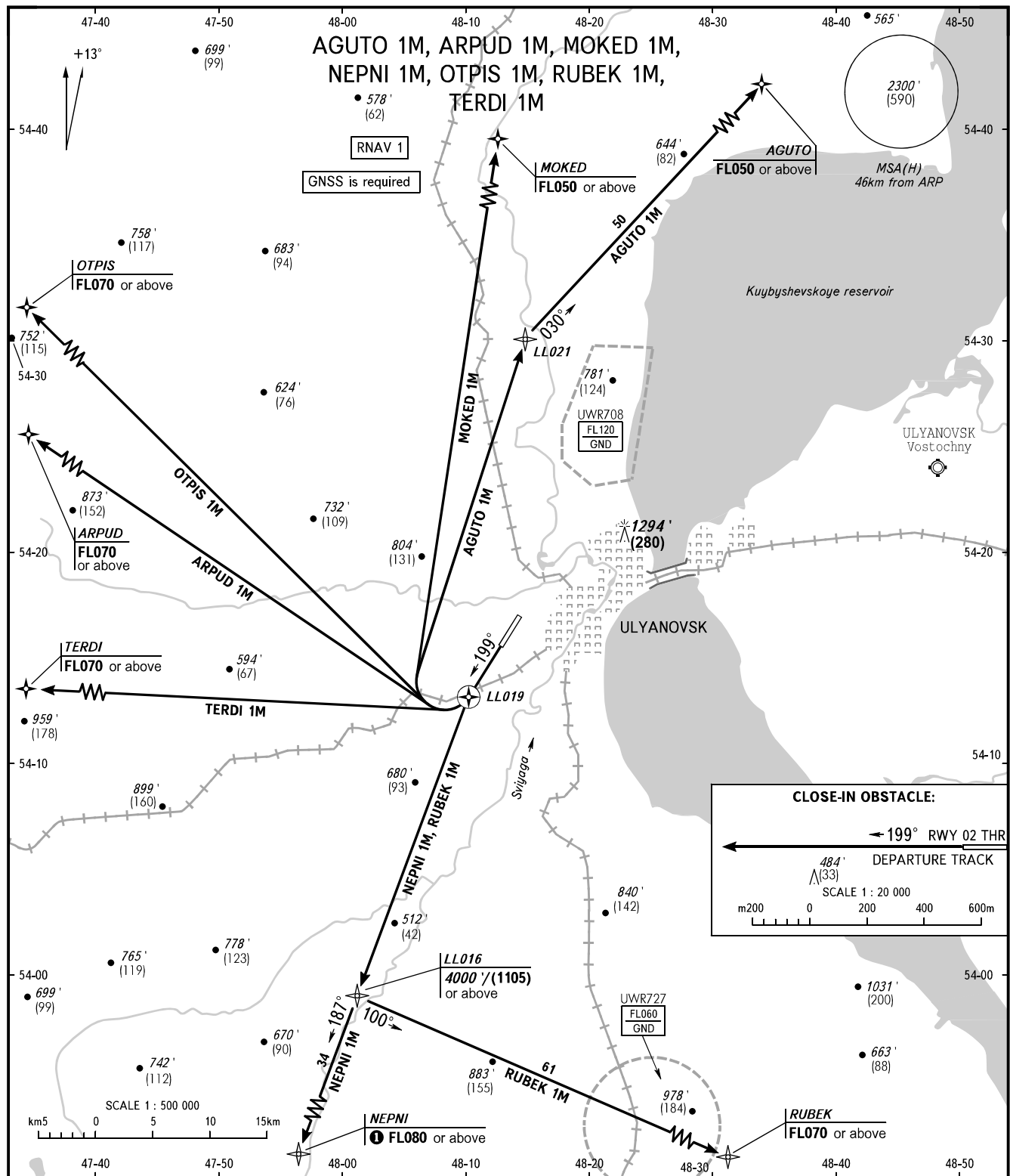


STANDARD DEPARTURE CHART
INSTRUMENT (SID) - ICAO

ULYANOVSK, RUSSIA
BARATAYEVKA
RNAV RWY 20

TRANSITION
ALTITUDE: 4000'



START	120.400	NOTE There is a close-in obstacle. ① FL070 - by ATC.
RADAR	120.800	
APPROACH	127.300	

BEARINGS AND TRACKS ARE MAGNETIC
ALTITUDES IN FEET
HEIGHTS IN METRES
ELEVATIONS IN FEET AND METRES
DISTANCES IN KILOMETRES

Alt set: -QNH(QFE on req);
-hPa(mm on req).

CHANGE: Heading, HGT