

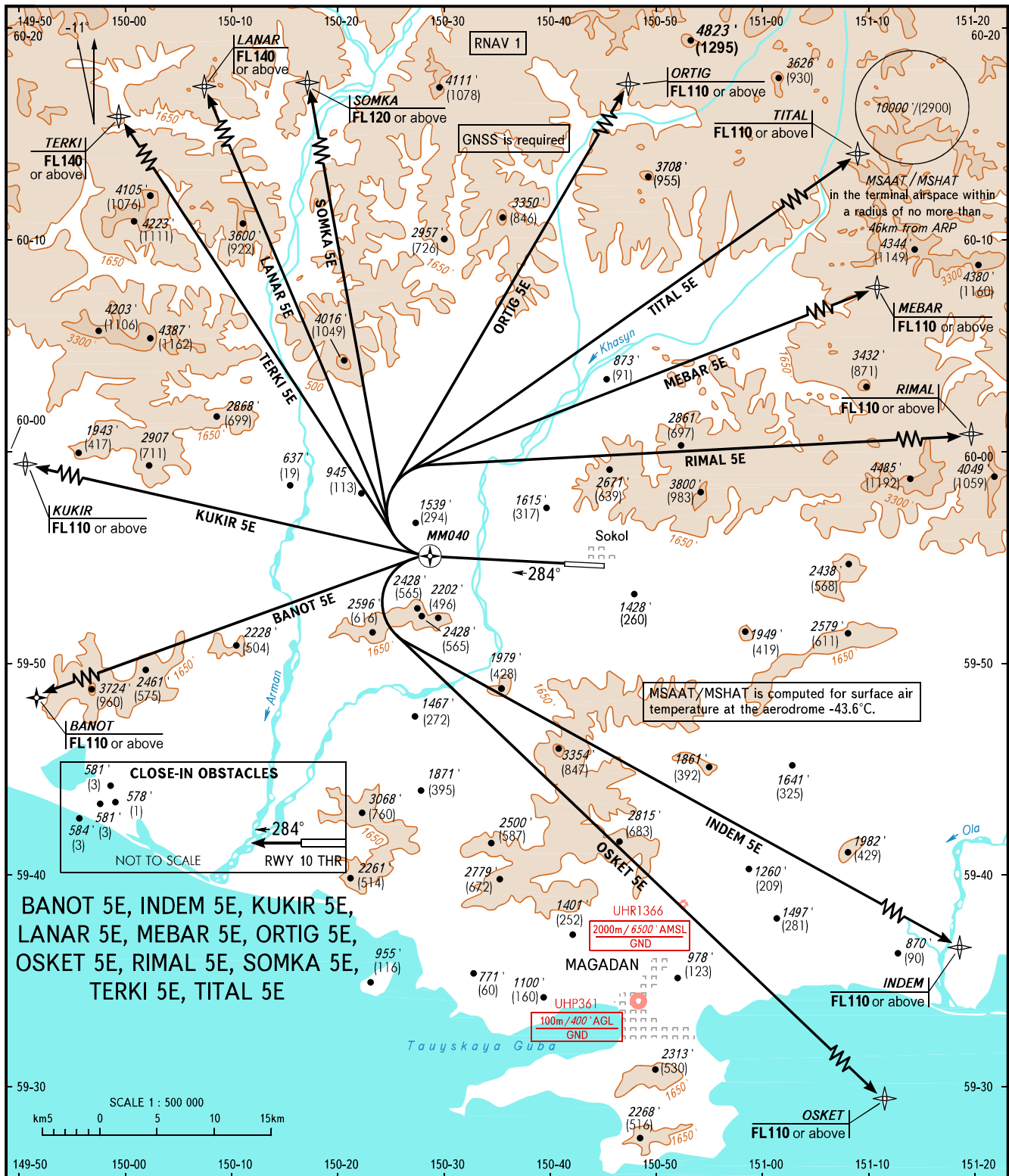
STANDARD DEPARTURE CHART  
INSTRUMENT (SID) - ICAO

TRANSITION ALT: 10000'  
TRANSITION HGT: (2900)

MAGADAN, RUSSIA

SOKOL

RNAV RWY 28



BANOT 5E, INDEM 5E, KUKIR 5E,  
LANAR 5E, MEBAR 5E, ORTIG 5E,  
OSKET 5E, RIMAL 5E, SOMKA 5E,  
TERKI 5E, TITAL 5E

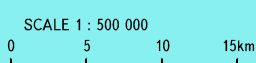
**CLOSE-IN OBSTACLES**

- 581' (3)
- 578' (1)
- 584' (3)

NOT TO SCALE

← 284°

RWY 10 THR



TOWER	120.800	MINIMUM CLIMB GRADIENTS:
APPROACH	119.300	- BANOT 5E 5.2% up to 3300'/(835) due to obstacles, then 3.5% up to 7000'/(1960) due to airspace structure;
		- INDEM 5E 6.1% up to 3500'/(895) due to obstacles;
		- KUKIR 5E 4.0% up to 3100'/(770) due to obstacles, 4.4% up to FL110 due to airspace structure;
		- LANAR 5E 5.6% up to 5400'/(1475) due to obstacles, then 5.3% up to FL140 due to airspace structure;
		- MEBAR 5E, ORTIG 5E, RIMAL 5E, SOMKA 5E, TITAL 5E 5.6% up to 5400'/(1475) due to obstacles;
		- OSKET 5E 6.1% up to 3500'/(895) due to obstacles, then 4.3% up to 7000'/(1960) due to airspace structure;
		- TERKI 5E 5.6% up to 5400'/(1475) due to obstacles, 5.9% up to FL140 due to airspace structure.
BEARINGS AND TRACKS ARE MAGNETIC	Alt set: -QNH(QFE on req);	
ALTITUDES IN FEET	-hPa(mm on req).	
HEIGHTS IN METRES		
ELEVATIONS IN FEET AND METRES		
DISTANCES IN KILOMETRES		