

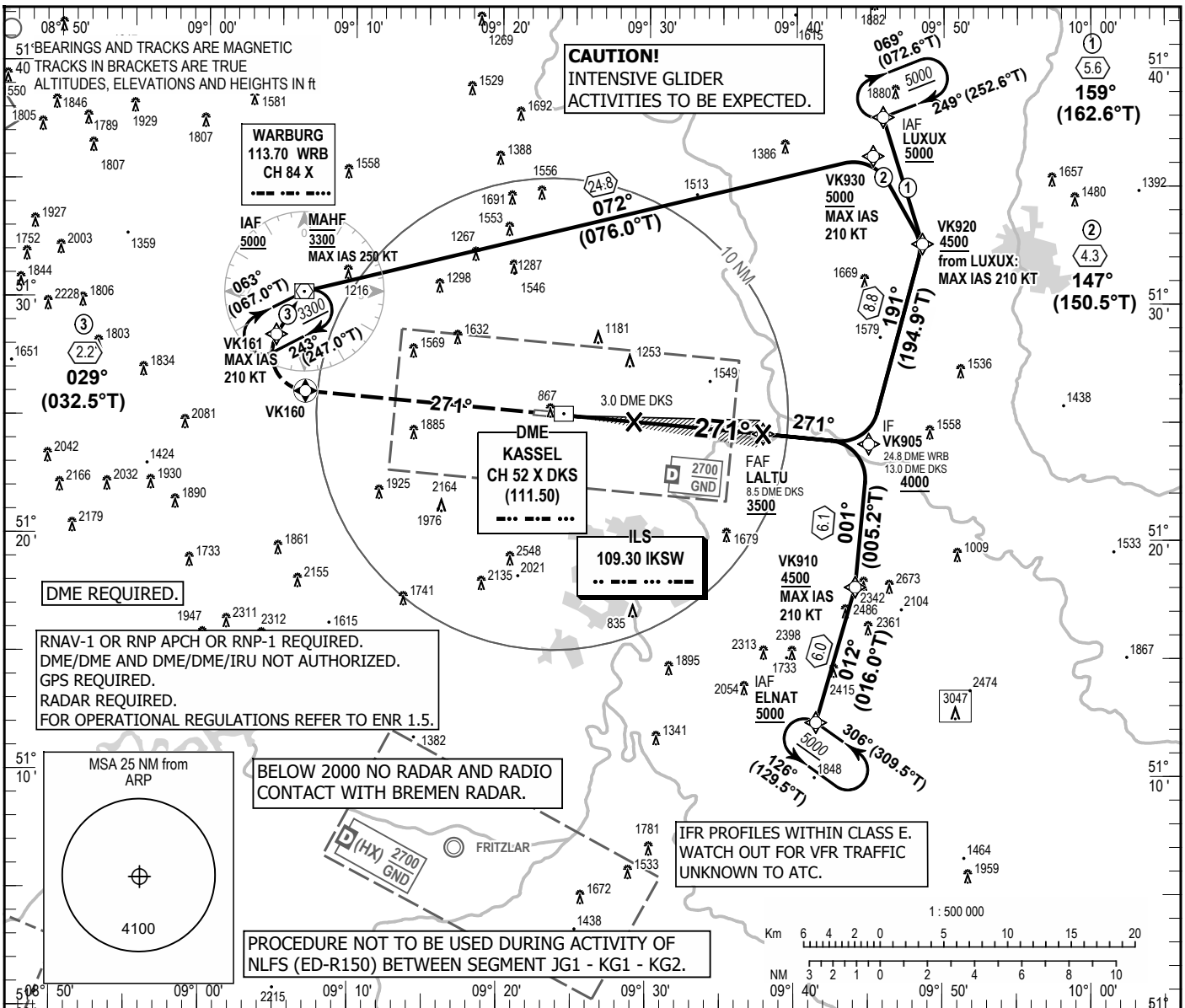
INSTRUMENT
APPROACH
CHART - ICAO

VAR 4° E

ELEV 860
OCH RELATED TO
THR 27 ELEV 802

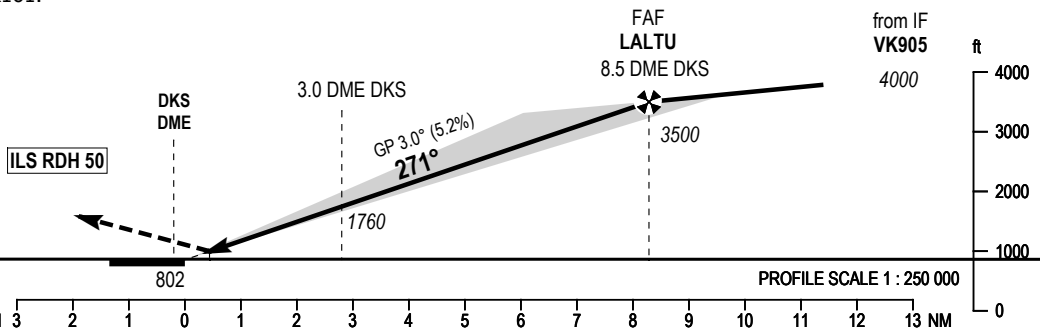
KASSEL ATIS	129.205
BREMEN RADAR	126.655
KASSEL TOWER	118.105
KASSEL GROUND	121.905

KASSEL-CALDEN
ILS Z CAT II & III
RWY 27



MISSED APPROACH PROCEDURE

Climb on course 271° to VK160;
RT, direct to VK161, to WRB
climbing 3300.
Max. IAS 210 Kts until VK161.



OCA (OCH)	A	B	C	D
ILS/DME CAT I	968 (166)	981 (179)	989 (187)	999 (197)
ILS/DME CAT II	880 (78)	898 (96)	909 (107)	924 (122)

DIST DME DKS	1	2	3	4	5	6	7	8
DIST THR	0.8	1.8	2.8	3.8	4.8	5.8	6.8	7.8
ALTITUDE	1120	1440	1760	2080	2390	2710	3030	3350

GS	kt	80	100	120	140	160	180
LALTU - THR (8.3 NM)	MIN:SEC	6:14	4:59	4:09	3:33	3:07	2:46
Rate of descent (5.2%)	ft/MIN	420	530	640	740	850	960

CAT IIIA AND CAT IIIB (MNM RVR 75M) APPROVED

Correction: Completely revised.