

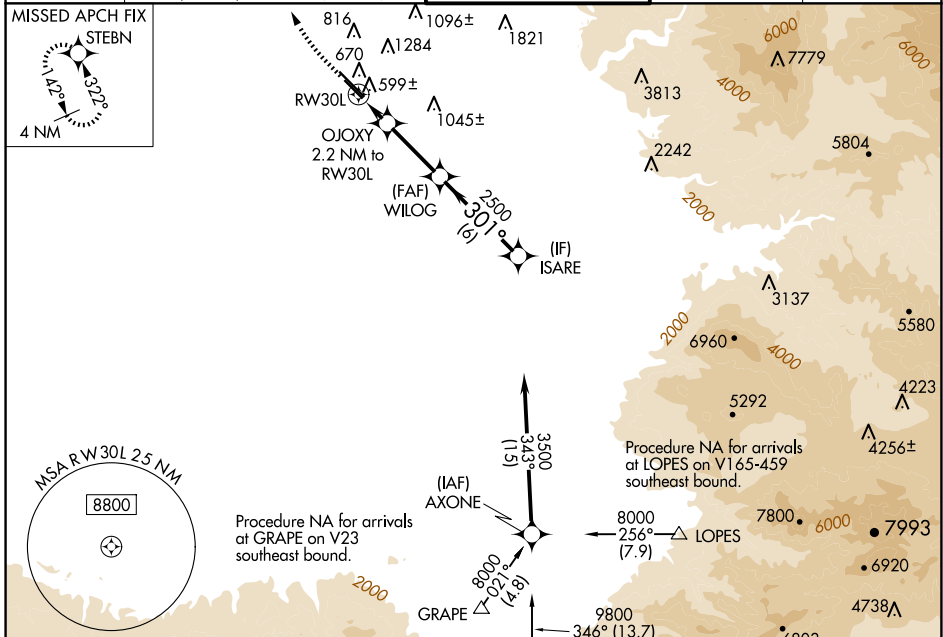
WAAS CH 82440 W30B	APP CRS 301°	Rwy ldg TDZE 6201 484 Apt Elev 510
--	------------------------	---

RNAV (GPS) RWY 30L

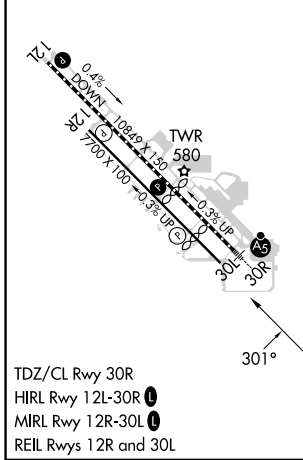
MEADOWS FLD (BFL)

For uncompensated Baro-VNAV systems, LNAV/VNAV NA below -1°C (31°F) or above 54°C (130°F). Circling NA northeast of Rwy 12L-30R.
 MISSED APPROACH: Climb to 1000 then climbing right turn to 3000 direct STEBN and hold.

ATIS 118.6	BAKERSFIELD APP CON ★ 118.8 284.625 (SOUTH) 118.9 270.3 (NORTH)	BAKERSFIELD TOWER ★ 118.1 (CTAF) 257.8	GND CON 121.7	UNICOM 122.95
----------------------	--	---	-------------------------	-------------------------



ELEV 510	D	TDZE 484	Procedure NA for arrival at GMN VORTAC airway radials 297 CW 328.
-----------------	----------	-----------------	---



1000	3000	STEBN	VGSi and RNAV glidepath not coincident (VGSi Angle 3.00/TCH 25).	ISARE
*LNAV only	OJOXY 2.2 NM to RWY 30L	WILOG	3500	
	*1.1 NM to RWY 30L		2500	
			1200*	GP 3.00° TCH 50

CATEGORY	A	B	C	D
LPV DA		734-7/8	250 (300-7/8)	
LNAV/VNAV DA		797-1 1/8	313 (300-1 1/8)	
LNAV MDA		860-1	376 (400-1)	
C CIRCLING	960-1	450 (500-1)	960-1 1/2 450 (500-1 1/2)	1060-2 550 (600-2)

SW-3, 20 MAR 2025 to 17 APR 2025

SW-3, 20 MAR 2025 to 17 APR 2025