

TACAN Y RWY 4

TACAN Chan 78	APCH CRS 044°	Rwy Idg TDZE Arprt Elev	7001 4 6
-------------------------	-------------------------	-------------------------------	-------------------------------------

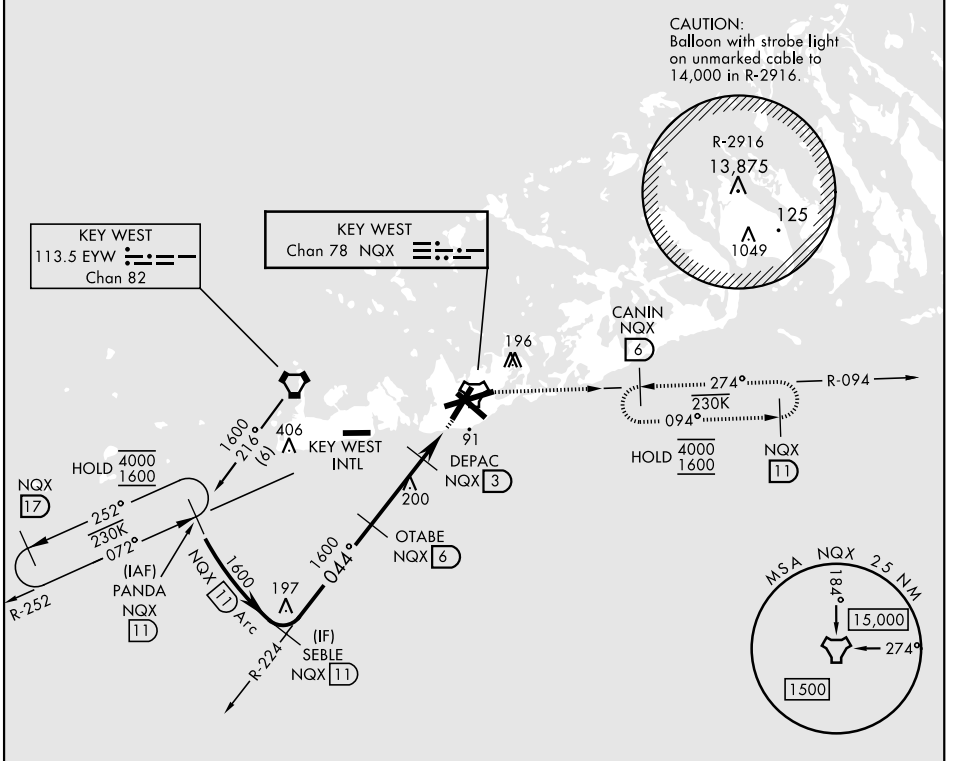
[USN]

KEY WEST NAS (BOCA CHICA FLD) (KNQX)

▼ MISSED APPROACH: Climb to 1600 via NXQ TACAN R-224 to NXQ, then via NXQ R-094 to CANIN and hold.

ATIS ★ 307.025	NAVY KEY WEST APP CON 124.025 313.7	NAVY KEY WEST TOWER ★ 118.575 340.25	GND CON 121.7 336.45	CLNC DEL 121.2 357.4	ASR/PAR
--------------------------	-----------------------------------------------	------------------------------------------------	--------------------------------	--------------------------------	---------

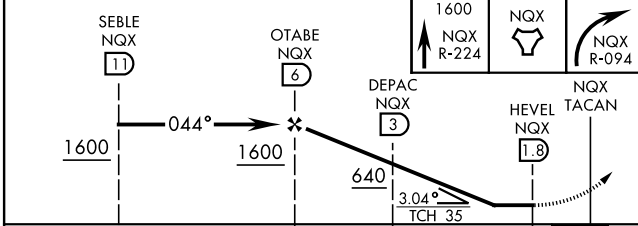
CAUTION: Short Intermediate Segment



SE-3, 20 MAR 2025 to 17 APR 2025

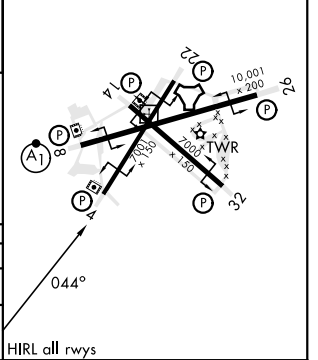
SE-3, 20 MAR 2025 to 17 APR 2025

EMERG SAFE ALT 100 NM 15,000



ELEV	6	TDZE	4
------	---	------	---

CATEGORY	A	B	C	D
S-4		360-1	356	(400-1)
CIRCLING	440-1 434 (500-1)	500-1 494 (500-1)	500-1½ 494 (500-1½)	560-2 554 (600-2)



KEY WEST, FLORIDA 24°34'N-81°41'W KEY WEST NAS (BOCA CHICA FLD) (KNQX)

Orig 23FEB23

TACAN Y RWY 4