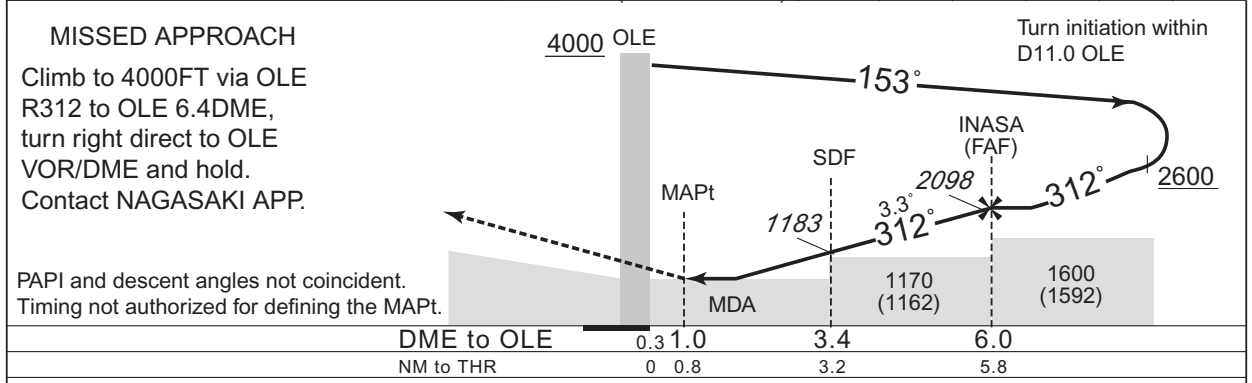
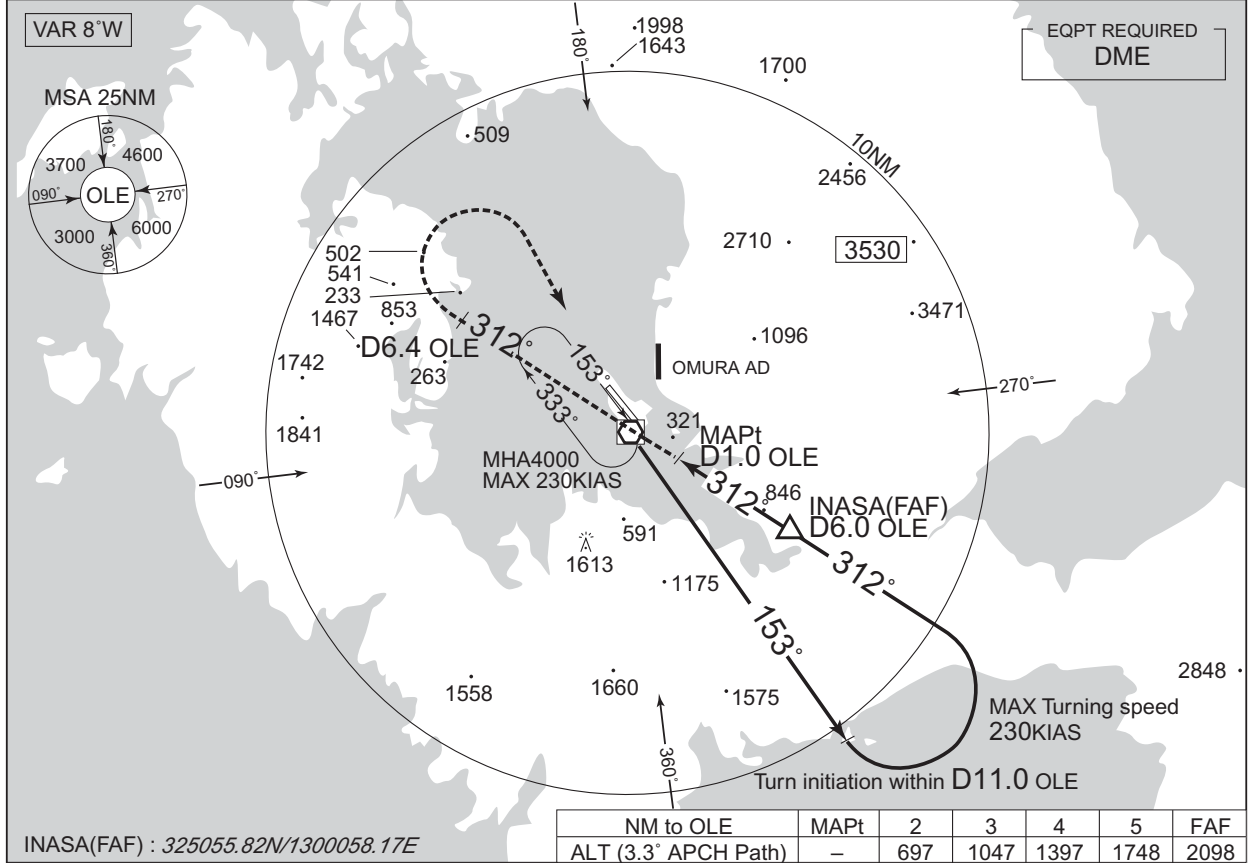


INSTRUMENT APPROACH CHART

RJFU / NAGASAKI

VOR RWY32

NAGASAKI APP 119.175 - 121.025 261.2	NAGASAKI VOR/DME 116.6 OLE $\overline{\text{---}}$ CH-113X 32°54'19"N/129°55'05"E	NAGASAKI TOWER 118.5 - 126.2 122.7 - 236.8	2200 - 2245(UTC) 1215 - 1300(UTC) NAGASAKI RADIO 118.5 AFIS provided by Fukuoka Airport Office	RADAR AVBL ATIS 126.85
--	--	--	---	---------------------------



<b>MINIMA</b>		<b>THR elev. 15</b>		<b>AD elev. 8</b>	
CAT	MDA(H)	RVR/CMV	CIRCLING		
			MDA(H)	VIS	
A	870 (862)	1200	870 (862)	1600	
B		1400		2400	
C		1800	890 (882)	3200	
D					

CHANGE : MINIMA.