

WAAS CH <b>72905</b> <b>W04A</b>	APP CRS <b>039°</b>	Rwy Idg TDZE Apt Elev	<b>5000</b> <b>2885</b> <b>2885</b>
--	------------------------	-----------------------------	---

# RNAV (GPS) RWY 4

LIBERAL MID-AMERICA RGNL (L.B.L)

RNP APCH - GPS.

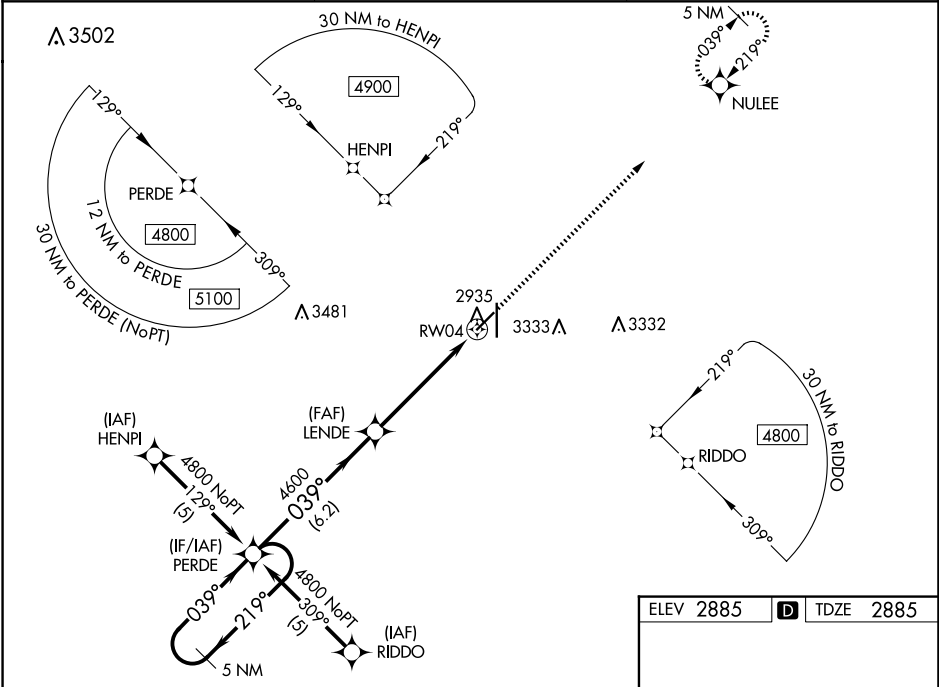
**⚠** For uncompensated Baro-VNAV systems, LNAV/VNAV NA below -20°C or above 54°C.  
**⚠** Circling NA east of Rwy 17-35. When local altimeter setting not received, use GUY altimeter setting and increase LPV DA to 3248 feet; increase LNAV/VNAV DA to 3412 feet and all visibilities 3/8 SM. Increase all MDAs 120 feet and LNAV visibility Cat C/D 3/8 SM, and Circling visibility Cat C/D 1/4 SM. Baro-VNAV and VDP NA when using GUY altimeter setting.

MISSED APPROACH: Climb to 4800 direct NULEE and hold.

AWOS-3PT  
**118.375**

KANSAS CITY CENTER  
**134.0 257.625**

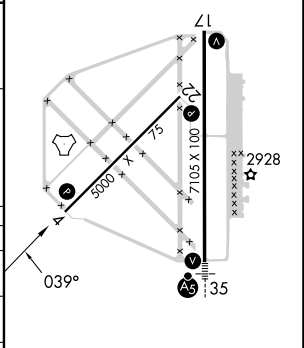
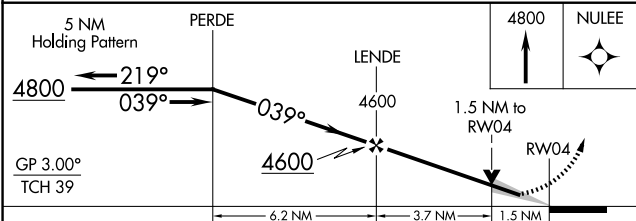
UNICOM  
**122.8 (CTAF)**



NC-2, 20 MAR 2025 to 17 APR 2025

NC-2, 20 MAR 2025 to 17 APR 2025

ELEV 2885	<b>D</b> TDZE 2885
-----------	--------------------



CATEGORY	A	B	C	D
LPV DA	3136-1		251 (300-1)	
LNAV/VNAV DA	3300-1 3/8		415 (500-1 3/8)	
LNAV MDA	3400-1	515 (600-1)	3400-1 3/8	515 (600-1 3/8)
<b>C</b> CIRCLING	3400-1	515 (600-1)	3400-1 1/2	3640-2 1/2
			515 (600-1 1/2)	755 (800-2 1/2)

REIL Rws 4, 17 and 22 **L**  
 MRL Rwy 4-22 **L**  
 HIRL Rwy 17-35 **L**