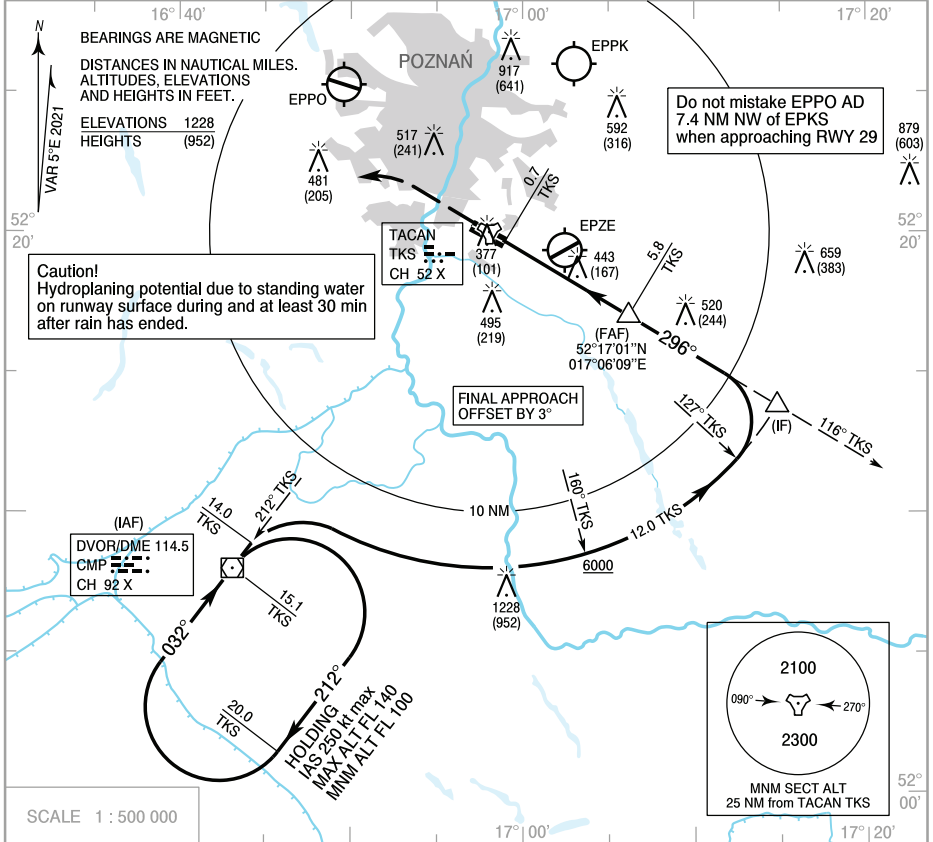


**INSTRUMENT  
APPROACH  
CHART - ICAO**

AERODROME ELEV 276 ft  
THR RWY 29 ELEV 274 ft  
HEIGHTS RELATED TO AD ELEV

Poznań APPROACH 128.925  
Krzesiny GROUND 121.750  
Krzesiny TOWER 121.025  
ATIS 123.910

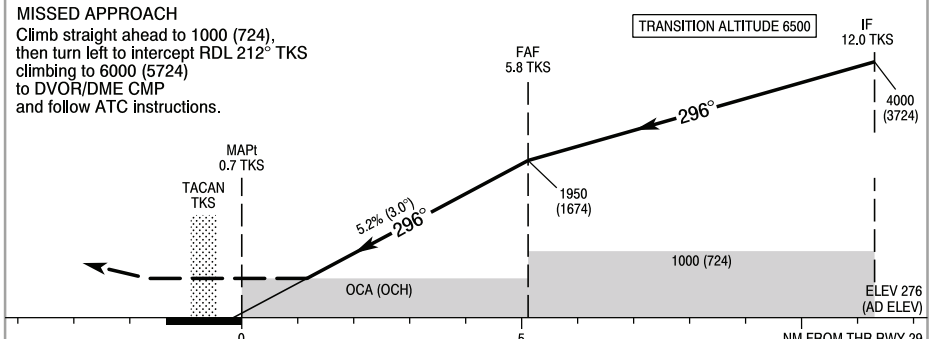
**POZNAŃ / Krzesiny  
TACAN  
RWY 29 (CAT A/B/C/D/E)**



Correction: ATIS FREQ changed.

**MISSED APPROACH**

Climb straight ahead to 1000 (724),  
then turn left to intercept RDL 212° TKS  
climbing to 6000 (5724)  
to DVOR/DME CMP  
and follow ATC instructions.



Cat. of ACFT	OCA (OCH)					Distance FAF - MAPt 5.1 NM						
	A	B	C	D	E	70	100	135	170	200	230	
Straight-in	716 (440)	716 (440)	716 (440)	716 (440)	716 (440)	4:20	3:05	2:15	1:50	1:30	1:20	
						Rate of descent	370	530	710	890	1050	1210
Circling*	716 (440)	796 (520)	1106 (830)	1106 (830)	1416 (1140)	Dist. to TKS	5.8	5.0	4.0	3.0	2.0	1.8
*Circling south of the aerodrome only.						Altitude	1950	1695	1380	1065	750	696

**INSTRUMENT  
APPROACH  
CHART - ICAO**

**POZNAŃ / Krzesiny  
TACAN  
RWY 29 (CAT A/B/C/D/E)**

FIX / POINT	LATITUDE	LONGITUDE	FIX FORMATION	
IAF DVOR/DME CMP	52°07'59.9"N	016°43'08.5"E		
IF	52°13'48.3"N	017°14'47.3"E	121.10° GEO (116° MAG) TACAN TKS	12.00 NM TACAN TKS
FAF	52°17'00.6"N	017°06'09.3"E	121.01° GEO (116° MAG) TACAN TKS	5.80 NM TACAN TKS
MAPt	52°19'38.2"N	016°59'02.2"E	121.00° GEO (116° MAG) TACAN TKS	0.70 NM TACAN TKS
Final approach descent angle: 3.00°				