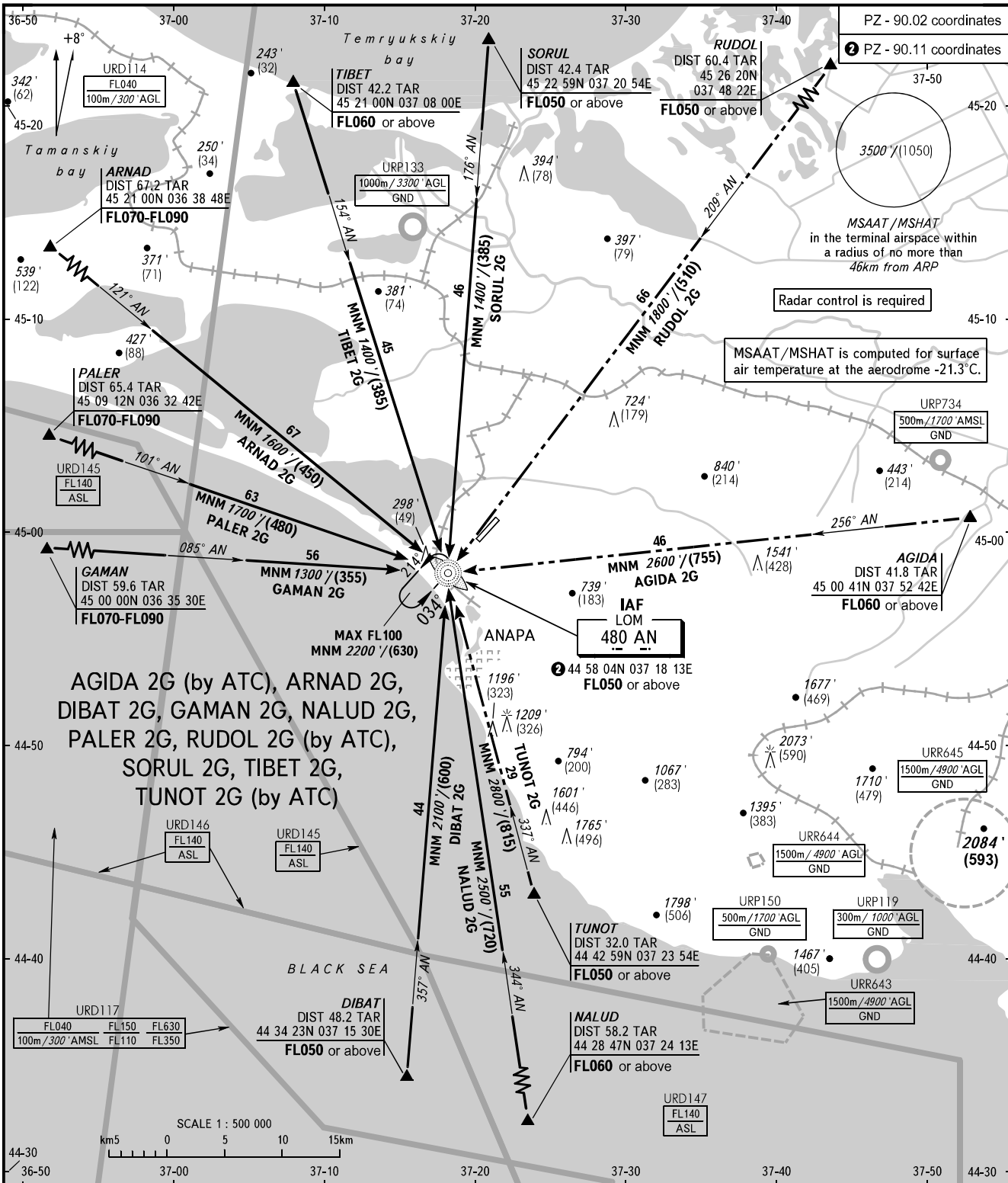


STANDARD ARRIVAL CHART  
INSTRUMENT (STAR) - ICAO

ANAPA, RUSSIA  
VITYAZEVO  
RWY 03

TRANSITION  
LEVEL: ①



AGIDA 2G (by ATC), ARNAD 2G,  
DIBAT 2G, GAMAN 2G, NALUD 2G,  
PALER 2G, RUDOL 2G (by ATC),  
SORUL 2G, TIBET 2G,  
TUNOT 2G (by ATC)

SCALE 1 : 500 000  
0 5 10 15 km

ANAPA RADAR 118.700  
ANAPA TOWER 119.800

- ① TRANSITION LEVEL:
- FL050 when QNH is 1013 hPa (760mm mercury column) or above;
  - FL060 when QNH is 977 hPa (733mm mercury column) or above, but less than 1013 hPa (760mm mercury column);
  - FL070 when QNH is less than 977 hPa (733mm mercury column).

BEARINGS AND TRACKS ARE MAGNETIC  
ALTITUDES IN FEET  
HEIGHTS IN METRES  
ELEVATIONS IN FEET AND METRES  
DISTANCES IN KILOMETRES

Alt set: -QNH(QFE on req);  
-hPa(mm on req).

CHANGE: URD145, URD146, URD147