

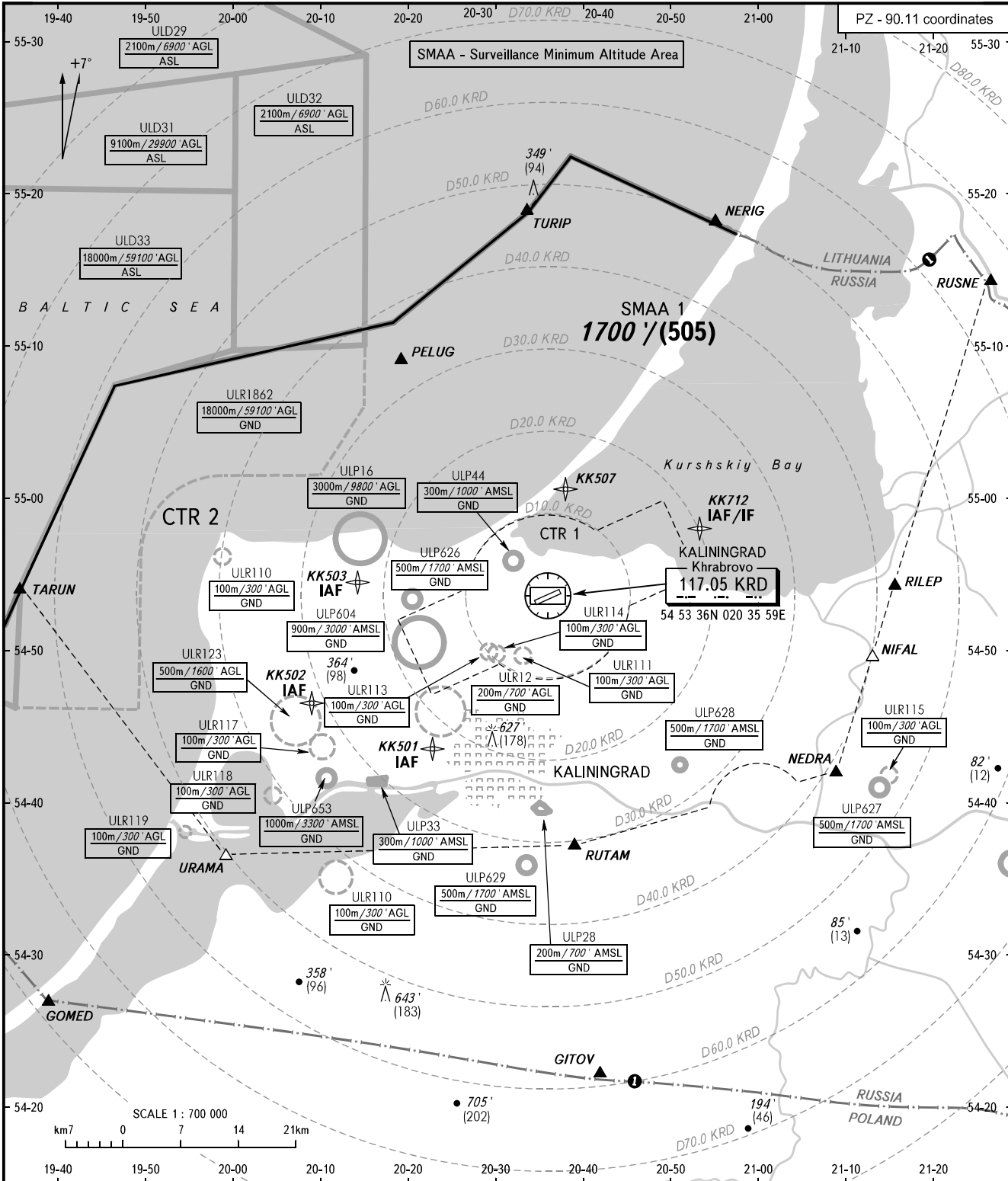
ATC SURVEILLANCE MINIMUM
ALTITUDE CHART - ICAO

ELEV
43' / 13m

TRANSITION ALT: 4000'
TRANSITION HGT: (1210)

KALININGRAD, RUSSIA

KHRABROVO



APPROACH TOWER 126.000
127.200

WARNING:

1. The chart may only be used for cross-checking of altitudes assigned while the aircraft is under radar control.
2. When vectoring is carried out under low-temperature conditions, minimum vectoring altitudes for IFR flight must be corrected by altimeter temperature correction by ATC.

COMMUNICATION FAILURE: In accordance with the procedures described in AIP.

① TMA boundaries coincide with the state border of the Russian Federation.

BEARINGS AND TRACKS ARE MAGNETIC
ALTITUDES AND ELEVATIONS IN FEET AND METRES
HEIGHTS IN METRES
DISTANCES IN KILOMETRES

Alt set: -QNH(QFE on req);
-hPa(mm on req).

CHANGE: ULP626

KALININGRAD, RUSSIA

KHRABROVO

SURVEILLANCE MINIMUM ALTITUDE AREAS

IDENT	MNM ALT/HGT (ft/m)	LATERAL LIMITS
SMAA 1	1700 (505)	Along Kaliningrad/Khrabrovo TMA boundary.