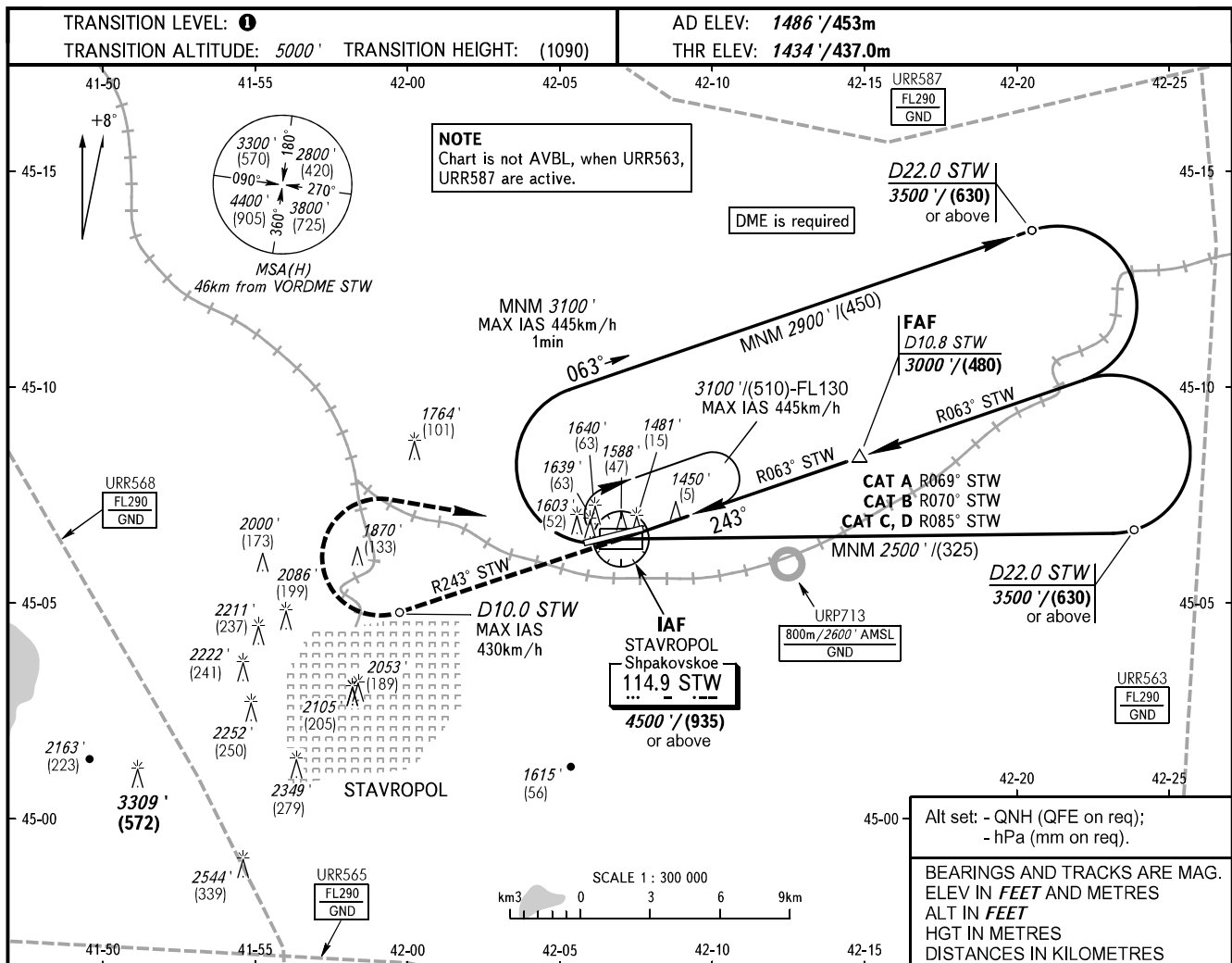


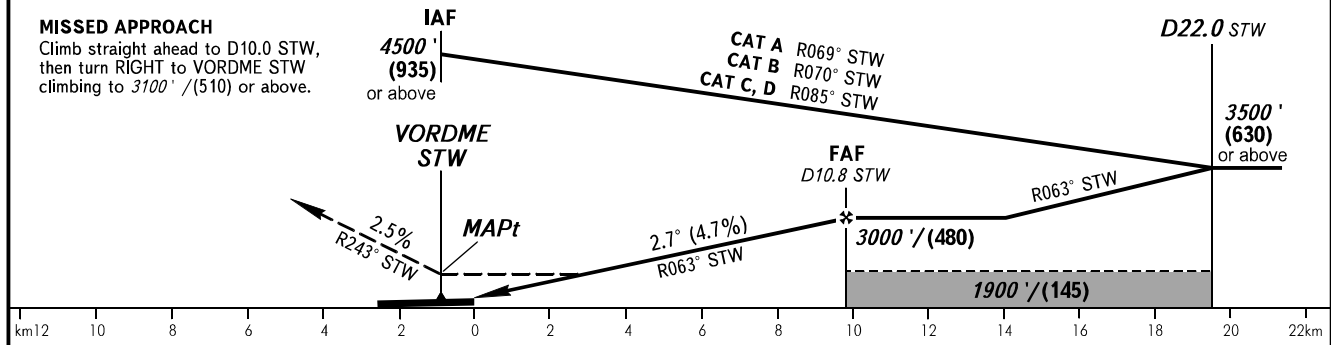
INSTRUMENT
APPROACH
CHART - ICAO

TOWER **120.900**

STAVROPOL, RUSSIA
SHPAKOVSKOYE
VOR RWY 25



DME IKT	4.0	6.0	8.0	10.0	10.8
ALTITUDE/HEIGHT	1950' / (160)	2250' / (250)	2560' / (345)	2870' / (440)	3000' / (480)



OCA(H)		A	B	C	D
Straight-in Approach		1870' (430') (135)	1870' (430') (135)	1870' (430') (135)	1870' (430') (135)
Circling		1940' (450') (140)	1980' (500') (155)	2150' (670') (205)	2270' (780') (240)

① TRANSITION LEVEL:
- FL060 when QNH is 1013 hPa (760mm mercury column) or above;
- FL070 when QNH is 977 hPa (733mm mercury column) or above, but less than 1013 hPa (760mm mercury column);
- FL080 when QNH is less than 977 hPa (733mm mercury column).

WARNING:
1. Final approach track is offset by 5° from the RWY centre line.
2. MAPt at VORDME STW. Timing not authorized for defining MAPt.
3. STAR PARAT 1S, BEDAP 1S, NETMI 1S, LEGNA 1S - pass IAF at FL060 or above.

GROUND SPEED	km/h	150	180	210	240	270	300	330	360	390
RATE OF DESCENT	m/s	1.9	2.3	2.7	3.1	3.5	3.9	4.3	4.7	5.0
	ft/min	385	463	540	617	694	771	848	925	1002

CHANGE: Limiting bearing line withdrawn, URP713