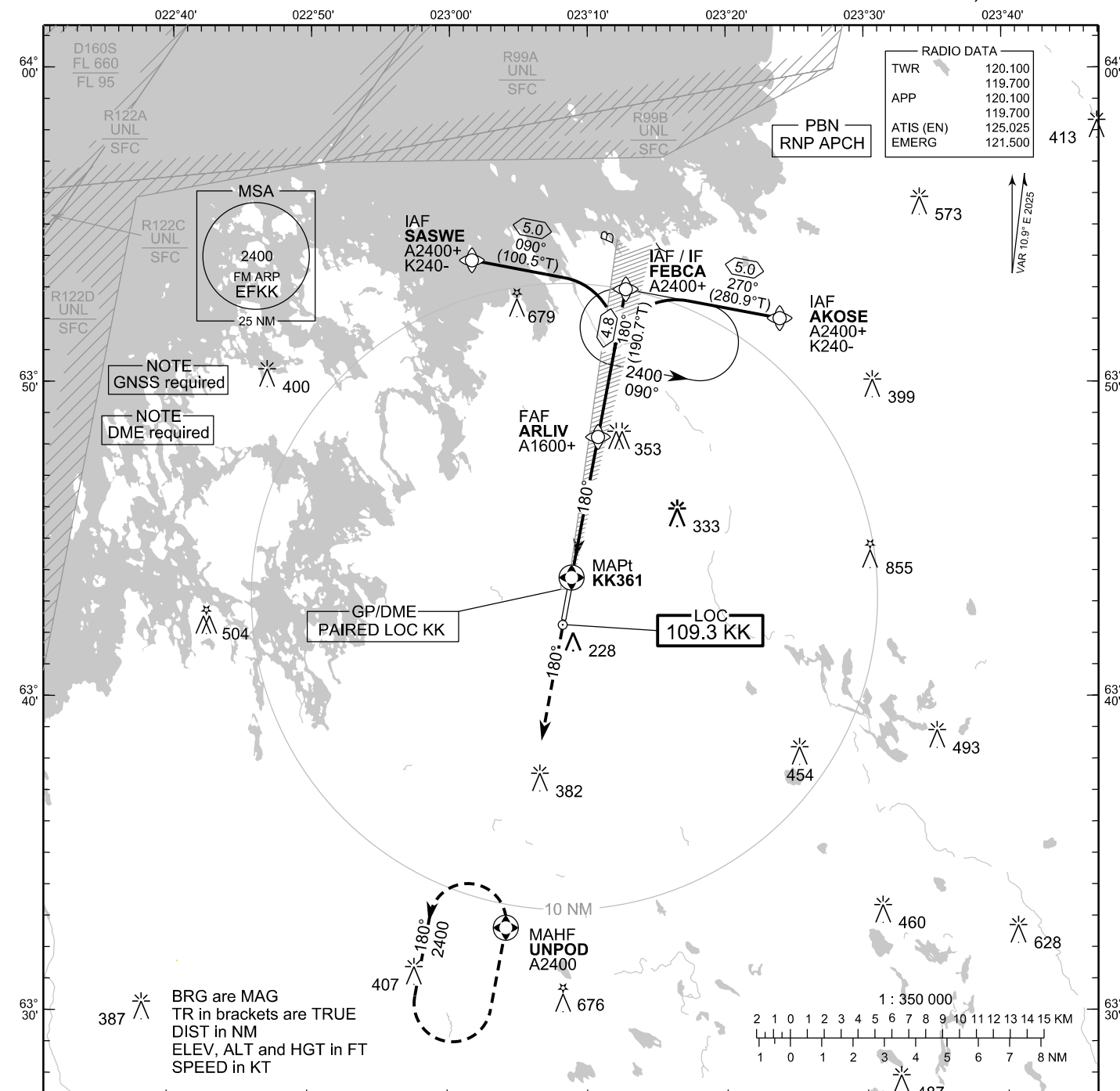


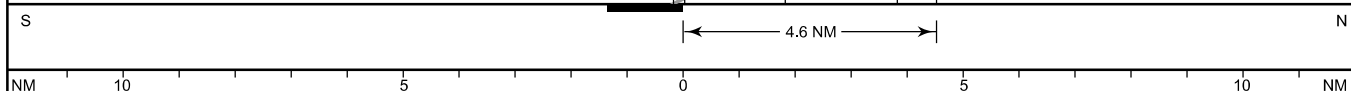
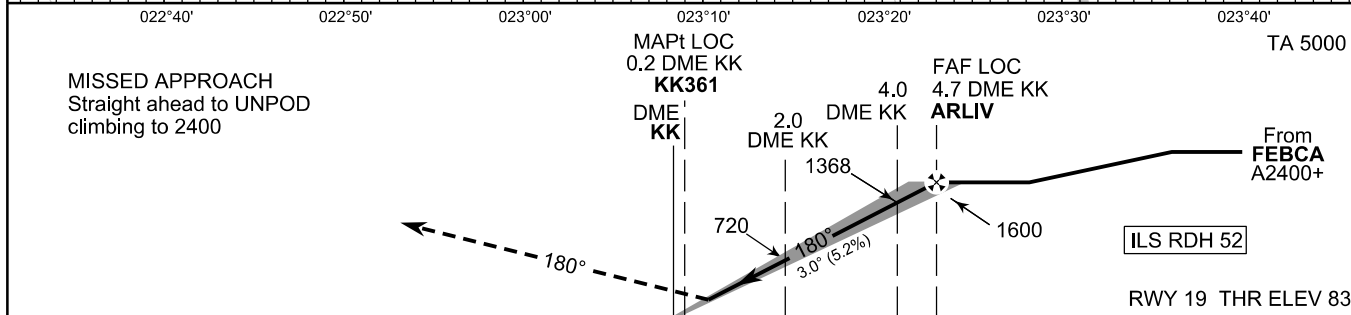
**INSTRUMENT  
APPROACH CHART - ICAO**

ELEV 85 FT  
HEIGHTS RELATED TO  
THR RWY 19 ELEV 83 FT

ILS or LOC RWY 19  
KOKKOLA-PIETARSAARI AERODROME  
KOKKOLA-PIETARSAARI, FINLAND



CHG: COR FEBCA LCA



OCA (H)	A	B	C	D
ILS CAT I	232 (149)	243 (160)	255 (172)	268 (185)
LOC	430 (350)			
Circling	530 (440)	580 (500)	730 (650)	780 (690)

	kt	90	100	120	140	160
FAF - MAPt 4.5 NM	min:sec	3:00	2:42	2:15	1:56	1:41
Rate of descent	ft/min	480	530	640	740	850

Timing not authorized for defining the MAPt

EFKK ILS or LOC RWY 19										
PROC ID NAV SPEC	SEQ NR	P/T	WPT			MAG	GEO TR	DIST NM	Constraints	
			ID	Type	Flyover				LVL	Speed
I19 AKOSE RNP APCH	005	IF	AKOSE	IAF	-	270°	280.9°T	5.0	A2400+	K240-
	010	TF	FEBCA	IF	-				180°	190.7°T
	020	TF	ARLIV	FAF LOC	-					
	030	TF	KK361	MAPt LOC	Y	180°	190.9°T	-		
	040	CA	-	-	-				A500+	
	050	DF	UNPOD	MAHF	Y	-	-	-	A2400	

EFKK ILS or LOC RWY 19										
PROC ID NAV SPEC	SEQ NR	P/T	WPT			MAG	GEO TR	DIST NM	Constraints	
			ID	Type	Flyover				LVL	Speed
I19 FEBCA RNP APCH	010	IF	FEBCA	IAF/IF	-	180°	190.7°T	4.8	A2400+	
	020	TF	ARLIV	FAF LOC	-					
	030	TF	KK361	MAPt LOC	Y	180°	190.9°T	-		
	040	CA	-	-	-				A500+	
	050	DF	UNPOD	MAHF	Y	-	-	-	A2400	

EFKK ILS or LOC RWY 19										
PROC ID NAV SPEC	SEQ NR	P/T	WPT			MAG	GEO TR	DIST NM	Constraints	
			ID	Type	Flyover				LVL	Speed
I19 SASWE RNP APCH	005	IF	SASWE	IAF	-	090°	100.5°T	5.0	A2400+	K240-
	010	TF	FEBCA	IF	-				180°	190.7°T
	020	TF	ARLIV	FAF LOC	-					
	030	TF	KK361	MAPt LOC	Y	180°	190.9°T	-		
	040	CA	-	-	-				A500+	
	050	DF	UNPOD	MAHF	Y	-	-	-	A2400	

RNAV Holdings							
ID	INBD TR	INBD MAG	Turn Direction	Speed	MNM HLDG LVL	TIME	DIST NM
FEBCA	280.9°T	270°	Left	K230-	A2400	1 MIN	-
UNPOD	010.6°T	000°	Left	K230-	A2400	1 MIN	-

WPT COORD
SEE PAGE EFKK AD 2.15 - 1

FINAL APPROACH PARAMETERS			
LOC Gradient	ILS		RDH
	CAT	GPA	
5.24 % (3.00°)	I	3.00°	52 FT