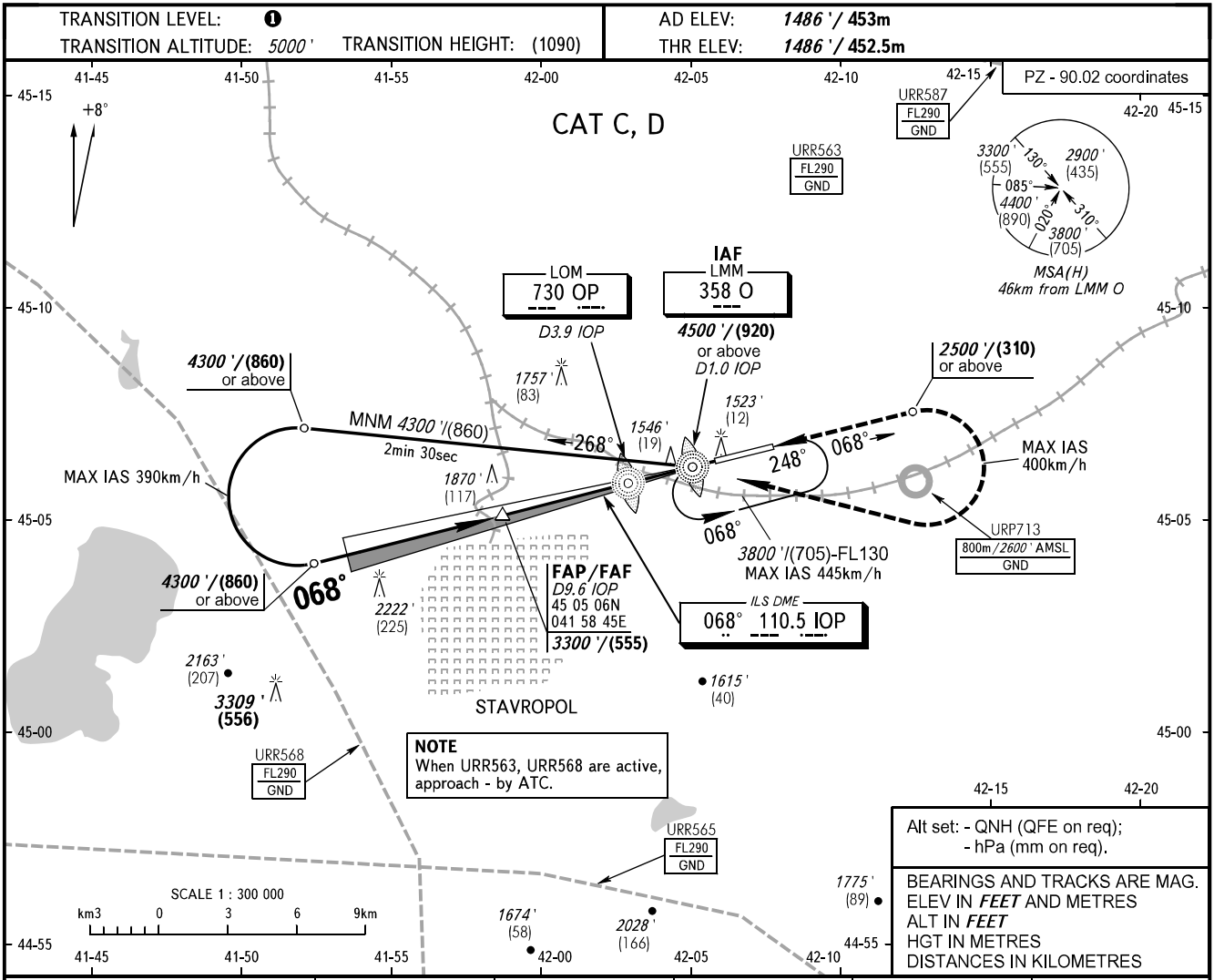


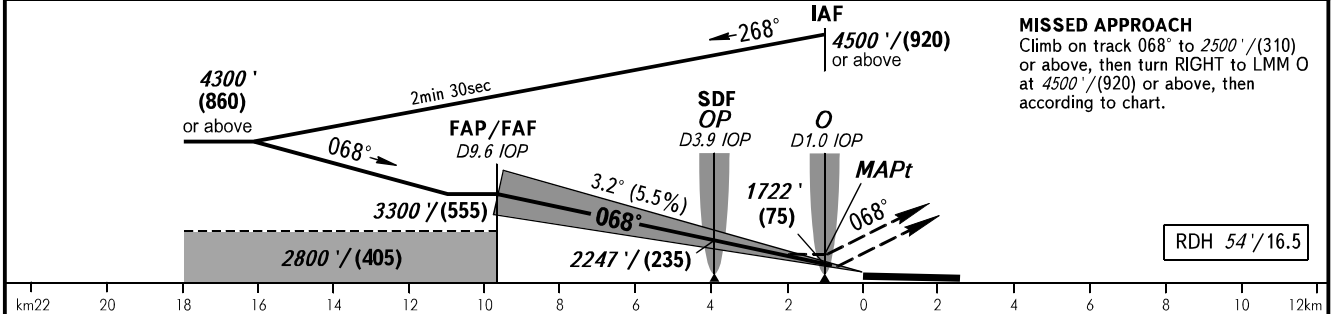
**INSTRUMENT  
APPROACH  
CHART - ICAO**

**STAVROPOL, RUSSIA  
SHPAKOVSKOYE  
ILS V CAT I, LOC V RWY 07**

TOWER **120.900**



DME IOP	9.6	8.0	6.0	4.0	2.0
ALTITUDE/HEIGHT	3300' / (555)	2990' / (460)	2630' / (350)	2270' / (240)	1910' / (130)



OCA(H)		A	B	C	D
Straight-in Approach	<b>CAT I</b>			1673' (187') (57)	1683' (198') (60)
	<b>LOC With SDF</b>			1810' (320') (100)	1810' (320') (100)
	<b>LOC WO SDF</b>			1980' (500') (155)	1980' (500') (155)
Circling				2150' (670') (205)	2270' (780') (240)

**TRANSITION LEVEL:**  
 - FL060 when QNH is 1013 hPa (760mm mercury column)  
 - FL070 when QNH is 977 hPa (733mm mercury column) or above, but less than 1013 hPa (760mm mercury column)  
 - FL080 when QNH is less than 977 hPa (733mm mercury column).

**WARNING:**  
 1. MAPt at LMM O. Timing not authorized for defining MAPt.  
 2. ILS DME IOP reads zero at RWY 07 THR.

GROUND SPEED	km/h	150	180	210	240	270	300	330	360	390
	m/s	2.3	2.8	3.2	3.7	4.1	4.6	5.1	5.5	6.0
RATE OF DESCENT	ft/min	451	541	632	722	812	902	992	1082	1173

CHANGE: Limiting bearing line withdrawn, URP713