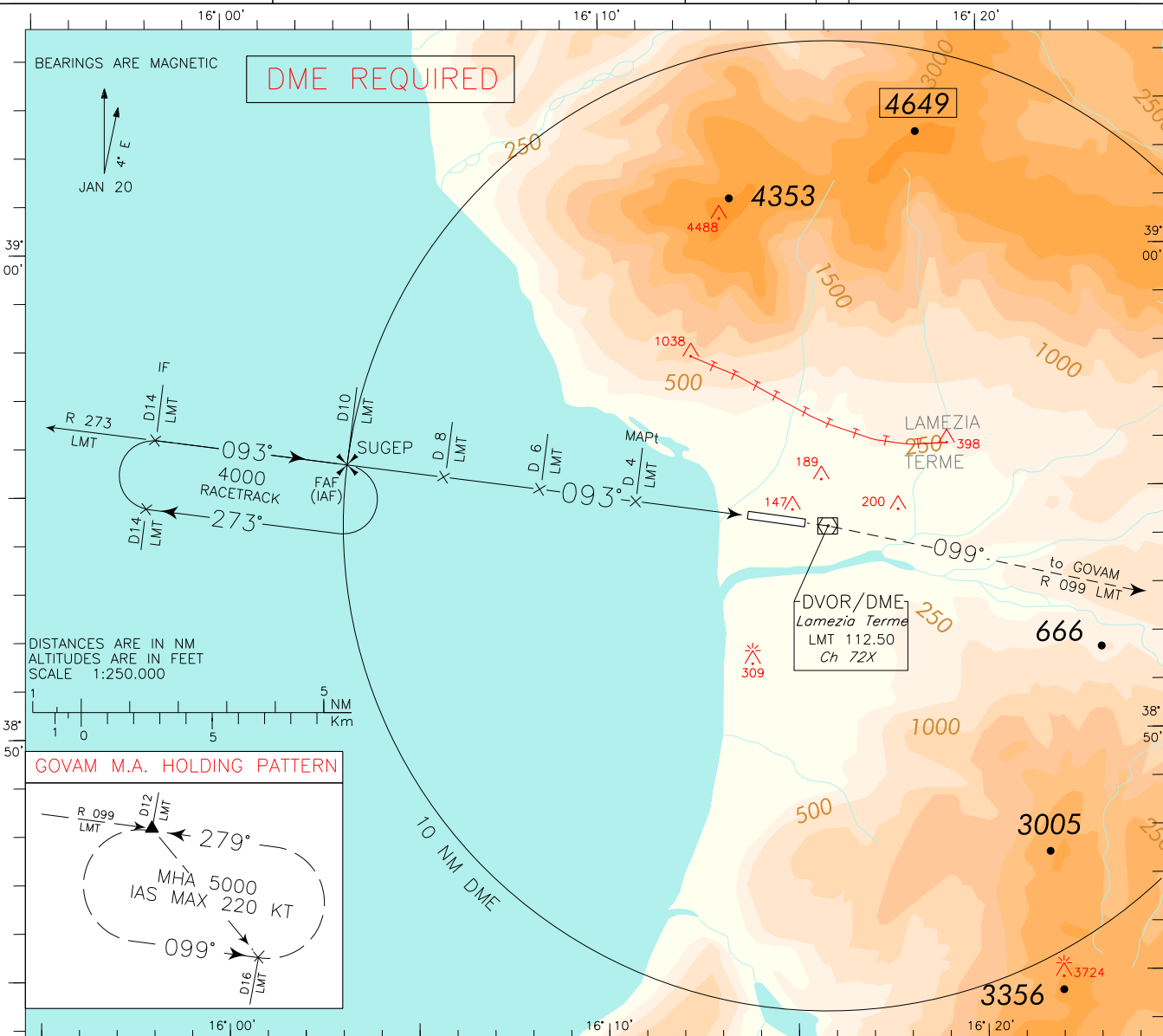


ICAO - INSTRUMENT APPROACH CHART

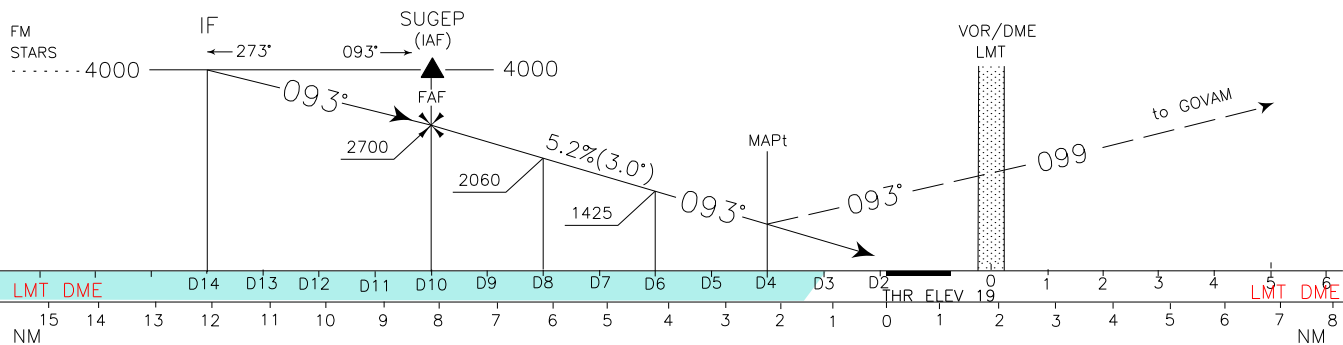
DOC. 8168 - ED.6 2014 AMDT 8

CHANGE: REVISED CHART

<p>REMARK: Final track off set 1.7° RWY center line intercepted 5591 m before THR 10</p>	APP <i>Roma Radar</i>	118.800 (133.250)	AD ELEV 46	L I C A	LAMEZIA TERME VOR RWY 10
	TWR <i>Lamezia TWR</i>	125.900 122.100			
	ATIS <i>Lamezia Terminal Information</i>	119.930			



TRANSITION ALT 6000 MISSED APPROACH: At 4NM LMT DME (3.3NM LAM DME) proceed on TR 093° (RDL 273) climbing to 5000 ft to LMT VOR, then proceed on RDL 099 LMT VOR (TR 099°) until GOVAM Holding pattern to be reached at 5000 ft.



STRAIGHT IN APPROACH	OCA (OCH)				(1) CIRCLING SECTOR NOT ALLOWED	FT PER MIN	GS	FAF-MAPt		MAPt-THR		LMT DME	ALT (HGT)	MNM SECT ALT LMT VOR DME
	VOR	A	B	C				6 NM	2.33 NM					
(1) CIRCLING	VOR	1000 (954)	1100 (1054)	1650 (1604)	2520 (2474)	850	160	2 : 15	0 : 52	9	2380 (2361)			
						745	140	2 : 34	1 : 00	8	2060 (2041)			
						635	120	3 : 00	1 : 10	7	1745 (1726)			
						530	100	3 : 36	1 : 24	6	1425 (1406)			
						425	80	4 : 30	1 : 45	5	1110 (1091)			

FIX/POINT	Coordinates (WGS84)
IAF (SUGEP)	38°55'30.9"N 016°03'13.2"N
IF	38°56'00.5"N 015°58'08.1"E
FAF (SUGEP)	38°55'30.9"N 016°03'13.2"N
RDL 273/8 NM LMT VOR/DME	38°55'16.1"N 016°05'45.8"E
RDL 273/6 NM LMT VOR/DME	38°55'01.1"N 016°08'18.4"E
MAPt	38°54'46.2"N 016°10'50.9"E