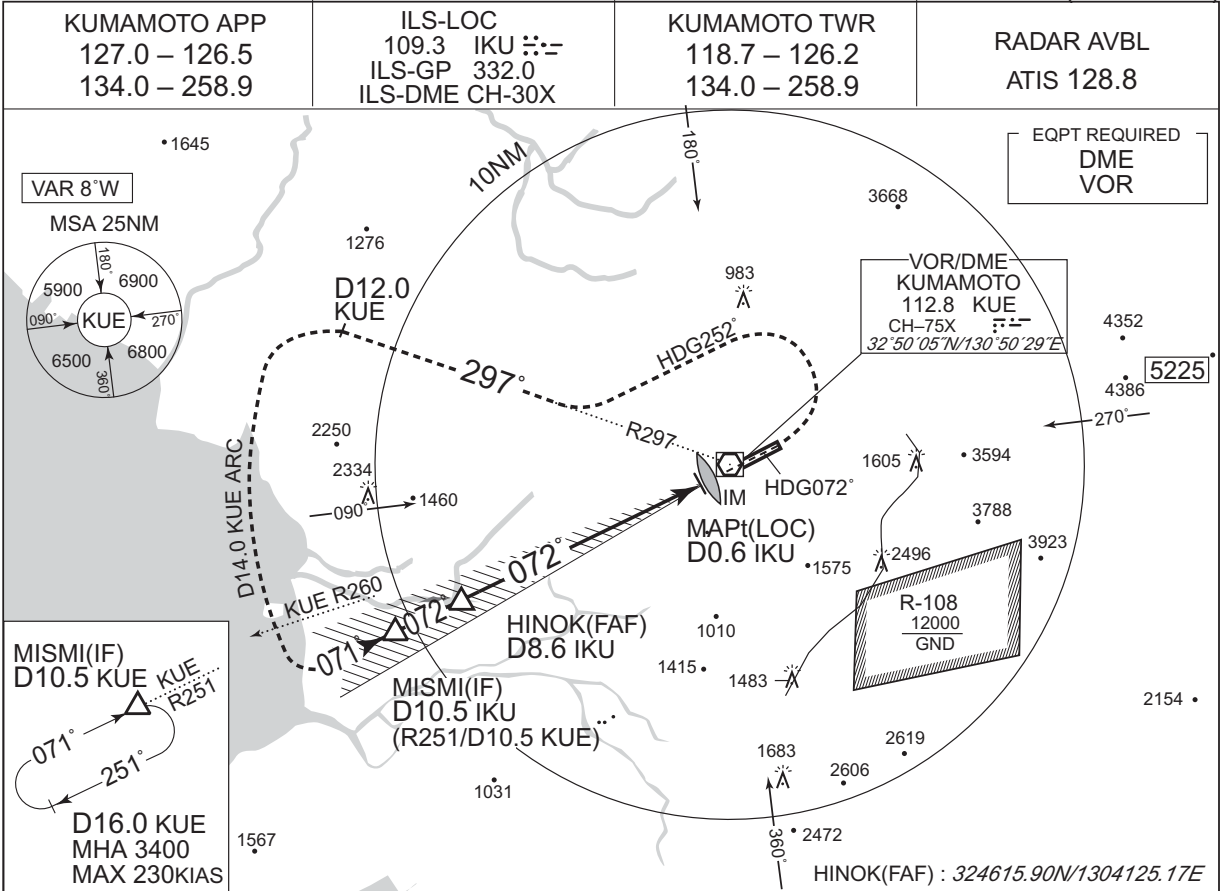
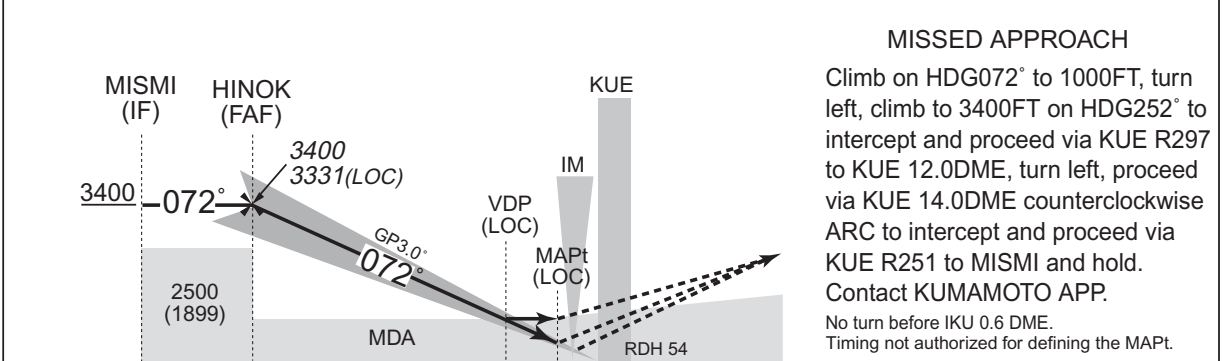


INSTRUMENT APPROACH CHART

RJFT / KUMAMOTO ILS or LOC RWY07 (CAT II & III)



NM to IKU	FAF	8	7	6	5	4	3	2	1	MAPt
ALT (3.0° APCH Path)	3331	3151	2833	2514	2196	1877	1559	1240	922	-



MISSED APPROACH
Climb on HDG072° to 1000FT, turn left, climb to 3400FT on HDG252° to intercept and proceed via KUE R297 to KUE 12.0DME, turn left, proceed via KUE 14.0DME counterclockwise ARC to intercept and proceed via KUE R251 to MISMI and hold. Contact KUMAMOTO APP.
No turn before IKU 0.6 DME.
Timing not authorized for defining the MAPt.

	10.5	8.6	1.0	0.6	0.2	DME to IKU
	10.4	8.4	0.8	0.5	0	NM to THR

Missed APCH climb gradient MNM 5.0%

MINIMA		THR elev. 601			AD elev. 632					
CAT	CAT III	CAT II		CAT I		LOC	CIRCLING			
	RVR	DA(H)	RA	RVR	DA(H)	RVR/CMV	MDA(H)	RVR/CMV	MDA(H)	VIS
A						900			1090 (458)	1600
B	100	775 (174)	242	450	801 (200)	550	910 (309)	1000	1100 (468)	2400
C										
D										

MINIMA with Missed APCH climb gradient of 2.5% are not established.
Circling to NORTH side of RWY only.

CHANGE : VAR. PROC course. ALT(3.0° APCH Path). DME to IKU.