

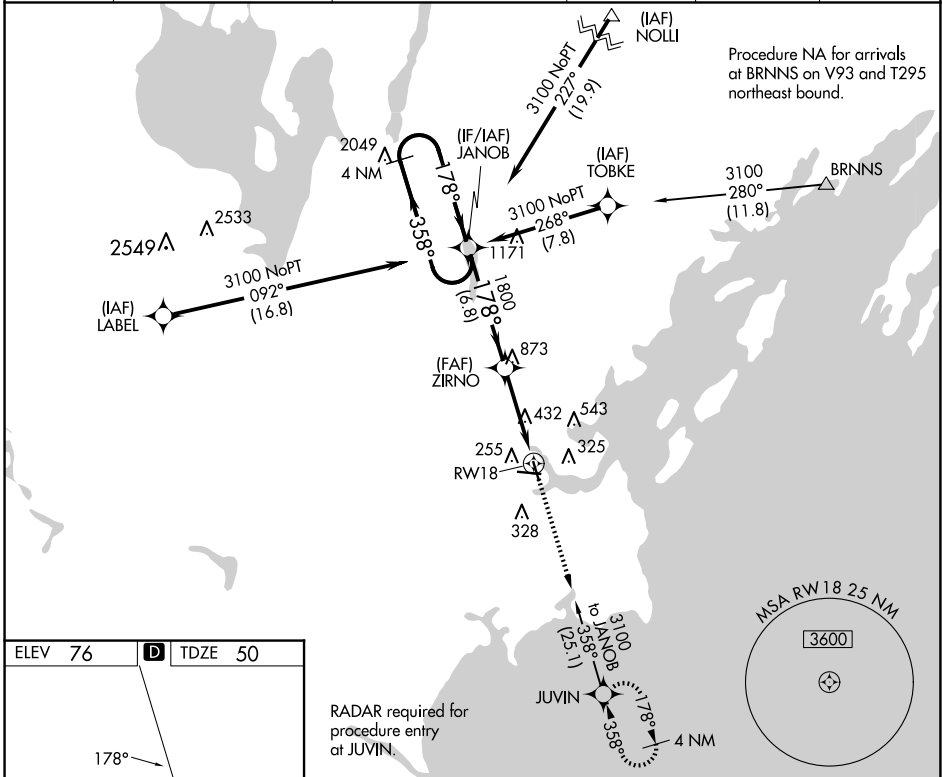
WAAS CH 77925 W18A	APP CRS 178°	Rwy Idg TDZE Apt Elev	5150 50 76
--	------------------------	-----------------------------	---------------------------------------

RNAV (GPS) RWY 18

PORTLAND INTL JETPORT (PWM)

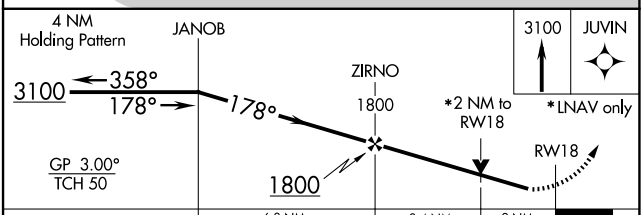
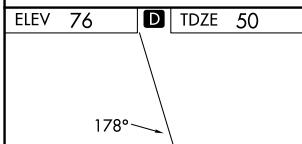
RNP APCH.	MISSED APPROACH: Climb to 3100 direct JUVIN and hold, continue climb-in-hold to 3100.
▼ For uncompensated Baro-VNAV systems, LNAV/VNAV NA below -19°C (-2°F) or above 54°C (130°F). Rwy 18 helicopter visibility reduction below ¾ SM NA.	

ATIS 119.05	PORTLAND APP CON ★ 119.75 269.35	PORTLAND TOWER ★ 120.9 (CTAF) 257.8	GND CON 121.9	CLNC DEL 121.9	UNICOM 122.95
-----------------------	--	--	-------------------------	--------------------------	-------------------------



NE-1, 20 MAR 2025 to 17 APR 2025

NE-1, 20 MAR 2025 to 17 APR 2025



CATEGORY	A	B	C	D
LPV DA		300-¾	250 (300-¾)	
LNAV/VNAV DA		477-1⅓	427 (500-1⅓)	
LNAV MDA	740-1	690 (700-1)	740-2	690 (700-2)
CIRCLING	740-1	664 (700-1)	740-2 664 (700-2)	860-2½ 784 (800-2½)