

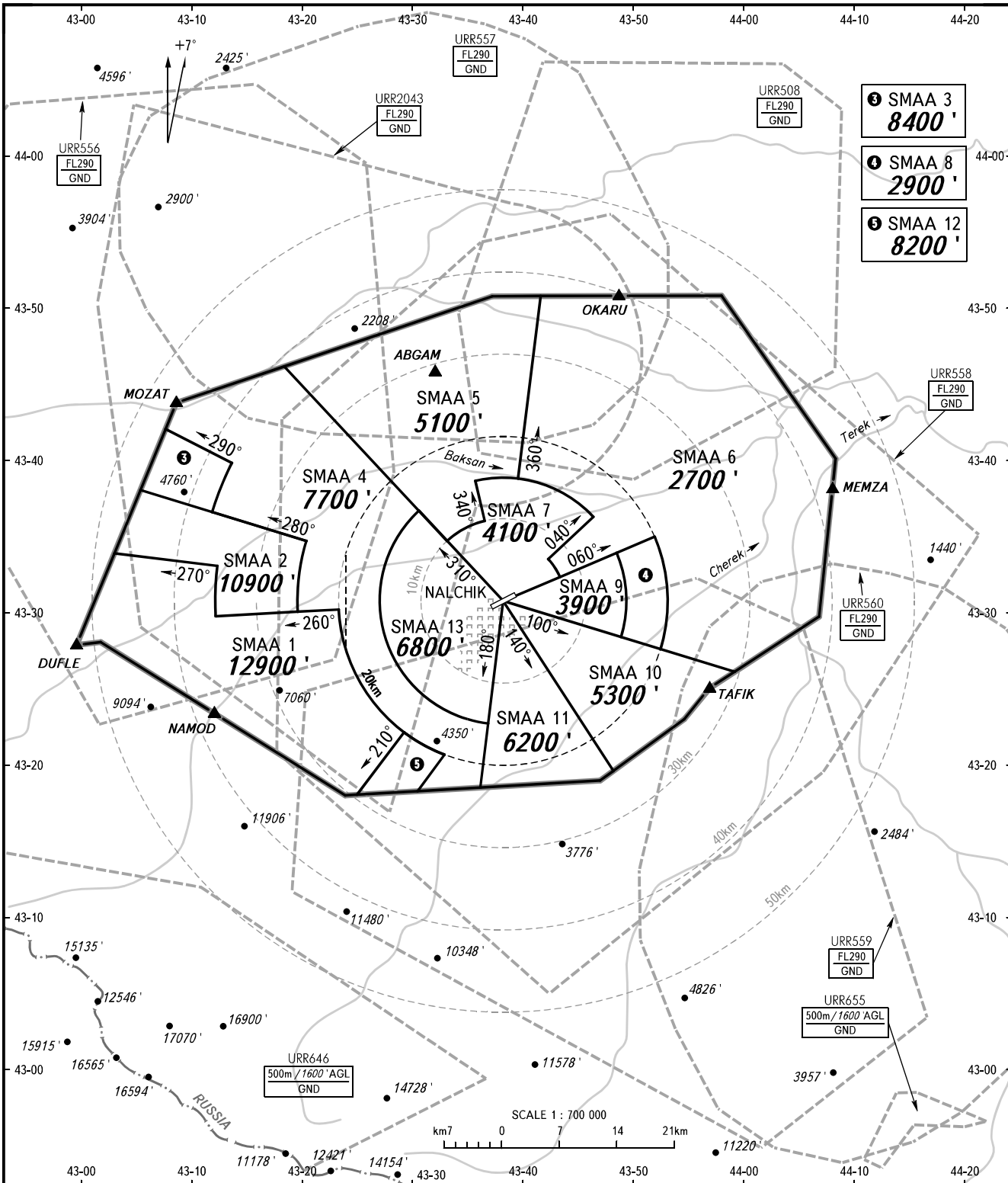
ATC SURVEILLANCE MINIMUM
ALTITUDE CHART - ICAO

ELEV
1463 / 446m

TRANSITION ALT: 5000'
TRANSITION HGT: (1105)

NALCHIK, RUSSIA

NALCHIK



APPROACH 126.900

NOTE:

1. When radar control is provided, the chart can be used for cross-checking of assigned altitudes only.
2. TEMPERATURE CORRECTION:
When vectoring is carried out under low-temperature conditions, minimum vectoring altitudes for IFR flight must be corrected by altimeter temperature correction.

BEARINGS AND TRACKS ARE MAGNETIC
ALTITUDES AND ELEVATIONS ARE FEET
HEIGHTS IN METRES
DISTANCES IN KILOMETRES

Alt set: - QNH (QFE on req);
- hPa (mm on req).

CHANGE: Heading, URR556

SURVEILLANCE MINIMUM ALTITUDE AREAS		
IDENT	MNM ALT (ft)	LATERAL LIMITS (PZ-90.11 coordinates)
SMAA 1	12900	431803N 0432504E - 431800N 0432400E - 432759N 0430155E - 432747N 0425945E - 433349N 0430306E - 433302N 0431224E, then anticlockwise by arc of a circle radius of 35 km centred at (433047N 0433812E) to 432944N 0431216E - 433012N 0432322E, then anticlockwise by arc of a circle radius of 20 km centred at (433047N 0433812E) to 432209N 0432917E - 431803N 0432504E.
SMAA 2	10900	433759N 0430525E - 433442N 0432026E, then anticlockwise by arc of a circle radius of 25 km centred at (433047N 0433812E) to 433003N 0431940E - 432944N 0431216E, then clockwise by arc of a circle radius of 35 km centred at (433047N 0433812E) to 433302N 0431224E - 433349N 0430306E - 433759N 0430525E.
SMAA 3	8400	433634N 0431154E, then clockwise by arc of a circle radius of 37 km centred at (433047N 0433812E) to 433948N 0431340E - 434200N 0430739E - 433759N 0430525E - 433634N 0431154E.
SMAA 4	7700	434609N 0431822E - 433642N 0433036E, then anticlockwise by arc of a circle radius of 15 km centred at (433047N 0433812E) to 432244N 0433651E - 431832N 0433609E - 431817N 0433030E - 432041N 0433255E, then clockwise by arc of a circle radius of 20 km centred at (433047N 0433812E) to 433012N 0432322E - 433003N 0431940E, then clockwise by arc of a circle radius of 25 km centred at (433047N 0433812E) to 433442N 0432026E - 433634N 0431154E, then clockwise by arc of a circle radius of 37 km centred at (433047N 0433812E) to 433948N 0431340E - 434200N 0430739E - 434344N 0430837E - 434609N 0431822E.
SMAA 5	5100	434609N 0431822E - 435047N 0433713E - 435048N 0434136E - 433849N 0433933E - then anticlockwise by arc of a circle radius of 15 km centred at (433047N 0433812E) to 433840N 0433541E - 433602N 0433632E, then anticlockwise by arc of a circle radius of 10 km centred at (433047N 0433812E) to 433443N 0433308E - 434609N 0431822E.
SMAA 6	2700	435048N 0434136E - 435048N 0435800E - 434004N 0440816E - 432942N 0440642E - 432606N 0435904E - 432736N 0435223E, then anticlockwise by arc of a circle radius of 20 km centred at (433047N 0433812E) to 433459N 0435153E - 433221N 0434319E, then anticlockwise by arc of a circle radius of 7.5 km centred at (433047N 0433812E) to 433332N 0434216E - 433618N 0434621E, then anticlockwise by arc of a circle radius of 15 km centred at (433047N 0433812E) to 433849N 0433933E - 435048N 0434136E.
SMAA 7	4100	433840N 0433541E, then clockwise by arc of a circle radius of 15 km centred at (433047N 0433812E) to 433618N 0434621E - 433332N 0434216E, then clockwise by arc of a circle radius of 7.5 km centred at (433047N 0433812E) to 433221N 0434319E - 433047N 0433812E - 433443N 0433308E, then clockwise by arc of a circle radius of 10 km centred at (433047N 0433812E) to 433602N 0433632E - 433840N 0433541E.
SMAA 8	2900	433459N 0435153E, then clockwise by arc of a circle radius of 20 km centred at (433047N 0433812E) to 432736N 0435223E - 432824N 0434850E, then anticlockwise by arc of a circle radius of 15 km centred at (433047N 0433812E) to 433356N 0434827E - 433459N 0435153E.
SMAA 9	3900	433047N 0433812E - 433356N 0434827E, then clockwise by arc of a circle radius of 15 km centred at (433047N 0433812E) to 432824N 0434850E - 433047N 0433812E.
SMAA 10	5300	433047N 0433812E - 432606N 0435904E - 432502N 0435649E - 432300N 0435430E - 431937N 0434807E - 433047N 0433812E.
SMAA 11	6200	433047N 0433812E - 431937N 0434807E - 431859N 0434655E - 431832N 0433609E - 433047N 0433812E.
SMAA 12	8200	432041N 0433255E - 431817N 0433030E - 431803N 0432504E - 432209N 0432917E, then anticlockwise by arc of a circle radius of 20 km centred at (433047N 0433812E) to 432041N 0433255E.
SMAA 13	6800	433047N 0433812E - 432244N 0433651E, then clockwise by arc of a circle radius of 15 km centred at (433047N 0433812E) to 433642N 0433036E - 433047N 0433812E.